



evisions

Intellicheck

Payment Processing Solution

Intellicheck Installation Guide

Product version 3.8

Last Updated 6/22/2022

Trademark, Publishing Statement, and Copyright Notice

© 1998-2022 Evisions. All rights reserved.

This software and related documentation are provided under a license agreement containing restrictions on use and disclosure and are protected by intellectual property laws. No part of this document may be reproduced, stored in or introduced into a retrieval system, or transmitted in any form or by any means (electronic, mechanical, photocopying, recording, or otherwise), or for any purpose, without the express written permission of Evisions.

The information contained herein is subject to change without notice and is not warranted to be error-free. Product features referenced herein for a period of time may not match product contents. Evisions does not warrant that the functions contained in the software will meet your requirements or that the operation of the software will be uninterrupted or error free. Evisions reserves the right to make changes and/or improvements in the software without notice at any time.

This software and documentation may provide access to or information on content, products, and services from third parties. Evisions and its affiliates are not responsible for and expressly disclaim all warranties of any kind with respect to third-party content, products, and services. Evisions and its affiliates will not be responsible for any loss, costs, or damages incurred due to your access to or use of third-party content, products, or services. Evisions does not endorse the content or developer of any products or web sites mentioned.

All information in this guide is designed for instructional purposes only. Evisions makes no guarantees regarding the accuracy or performance of any techniques used in this guide. Software configurations and environments may vary, and some techniques used in this guide may not operate efficiently under all configurations. This guide may contain examples of various technologies or products, which are the sole property and responsibility of their creators.

Trademarks are the property of the respective owners for any products mentioned herein.

Table of Contents

Overview	4
System Requirements	4
Step 1: Create the "evisions" Oracle User	5
Step 2: Configure MAPS for Use with IntelleCheck	6
Import/Update Product License	7
Configure Users and Groups	8
Configure Data Connections	10
Configure Email Servers	14
Configure Printers	15
Adding Printers to MAPS	15
Printer Configuration by Account Code	17
Add Authorizations for IntelleCheck	18
Step 3: Create the IntelleCheck Tables	19
Step 4: Configure IntelleCheck	21
Import Configuration File	21
Configure Users	21
Configure Email	22
Step 5: Install IntelleCheck Files on the Banner Server	23
UNIX Installation	23
NT Installation	24
Step 6: Test Your Installation	25
Getting Help	26
Can't find what you're looking for?	26
Glossary	27

Overview

This guide contains instructions for installing IntelCheck in a Banner® by Ellucian™ environment. It assumes that you have already installed and configured MAPS, which is the Multiple Application Platform Server on which the Evisions Higher Education products run. If you have not yet installed MAPS, please refer to the [MAPS Installation Guide](#) for detailed instructions on how to import your license, download the IntelCheck mapplet and IntelCheck client application, and configure your users, groups, database connections, and printers for use with IntelCheck.

You may find it useful to take a look at some of the IntelCheck documentation before beginning the installation. The [Resources](#) section of this document contains links to the product Help, End User Guide, and Administrator Guide, which can help you to understand the product and its functions.

The following procedures must be followed closely to ensure a proper installation. It is assumed you have a working knowledge of your Banner® host operating system and are familiar with the basic structure of your Banner® installation. Please do not take shortcuts when typing the commands contained in this document, as they are specific. It is also assumed that you have a working knowledge of Oracle and basic administration commands. Keep in mind that all commands shown are case sensitive for UNIX.

If you encounter any problems or have any questions during this installation, please don't hesitate to [contact Evisions Support](#) so we can assist.

System Requirements

IntelCheck requires:

- Any version of Banner
- Any Banner platform (Unix or NT)
- Oracle table space size – Approximately 70MB
- Printers – A laser printer that is PCL 5 compatible is required. Refer to the [IntelCheck Implementation Guide](#) for further details about printer and toner requirements.

Please refer to the [MAPS - Hardware and Software Requirements](#) document for system requirements for the MAPS server and end user machines.

Step 1: Create the "evisions" Oracle User

You will need to create a new Oracle user called `evisions` in each Banner® Oracle instance where you will be using IntellectCheck. This user will own the Evisions IntellectCheck Oracle tables.

In SQLPLUS, type the following (changing the password/tablespace as needed):

```
CREATE USER EVISIONS IDENTIFIED BY PASSWORD DEFAULT TABLESPACE DEVELOPMENT TEMPORARY TABLESPACE  
TEMP;
```

Then, make sure that this user has appropriate access to be able to create the necessary tables.

In SQLPLUS, type:

```
GRANT RESOURCE, CONNECT, BAN_DEFAULT_CONNECT, BAN_DEFAULT_Q, CREATE TABLE, CREATE PUBLIC  
SYNONYM, DROP PUBLIC SYNONYM, UNLIMITED TABLESPACE TO EVISIONS;  
  
GRANT SELECT ON GXVBANK TO EVISIONS;  
  
GRANT SELECT ON PTRPICT TO EVISIONS;
```

Important Note

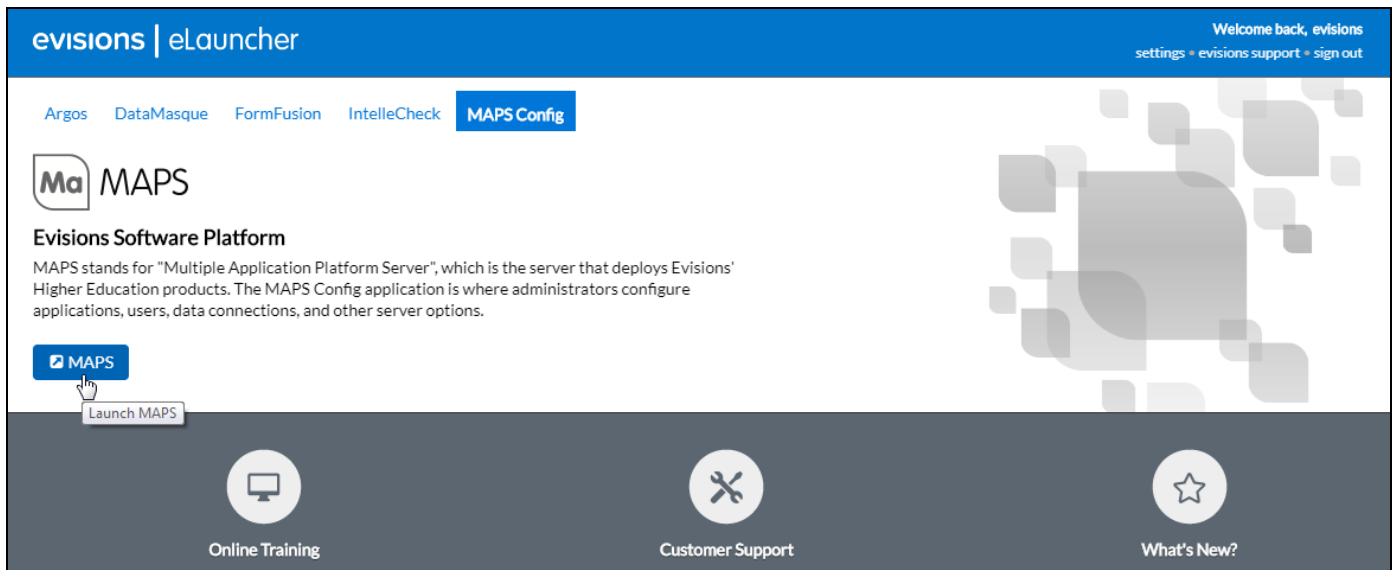
If you already have a user called `evisions` that is used for another Evisions product, ensure that this user has the `BAN_DEFAULT_Q` role. If this was not done when the user was created, it should be done now using the `BANSECR` process in Banner.

Step 2: Configure MAPS for Use with IntelleCheck

Log in to the machine where MAPS is installed, either directly or via a tool such as Remote Desktop. You must log in from the server because you will be creating new data connections for IntelleCheck and configuring printers.

Open a web browser and navigate to the URL for your MAPS installation. If this is a new installation, the default URL from the server is <http://localhost:8080>. Adjust the protocol and port number as required if you have changed these settings in MAPS.

Go to the **MAPS Config** section in the eLauncher and select the button to launch the MAPS Config application:

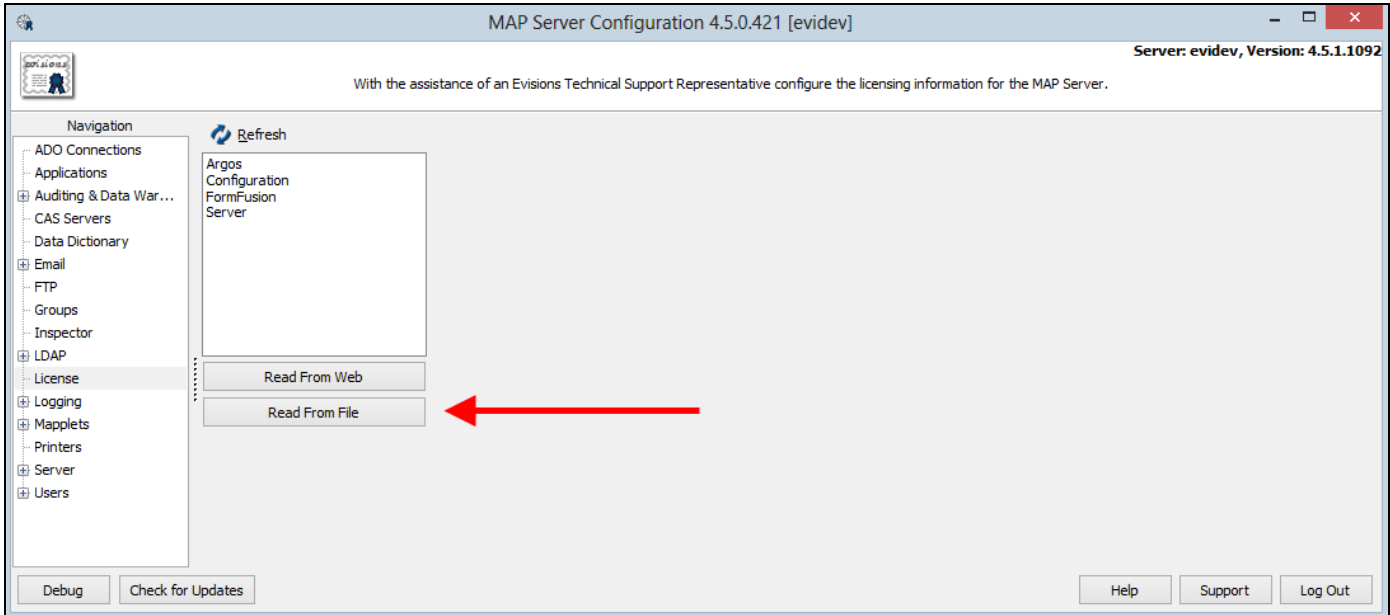


When prompted, log in to MAPS using your administrative credentials. The default credentials for a new installation are "Administrator" and "Password" (with a capital 'P').

Import/Update Product License

Go to the **License** screen in MAPS. If you are a new Evisions client, you will have been supplied with a license file to import. This is generally emailed to the person who submitted the purchase order. Please [open a case](#) if you require assistance locating your license file.

Click the **Read from File** button to browse for the file:



If you have other MAPS applications, you can use the **Check for Updates** button instead to retrieve your updated license file from Evisions' servers. You could also click **Read from Web** on the License screen to download the new license file.

Whenever a new application is added to your license, you will be prompted to download and install the necessary application files. Click **Yes** to proceed, then wait for the IntelCheck files to finish downloading.

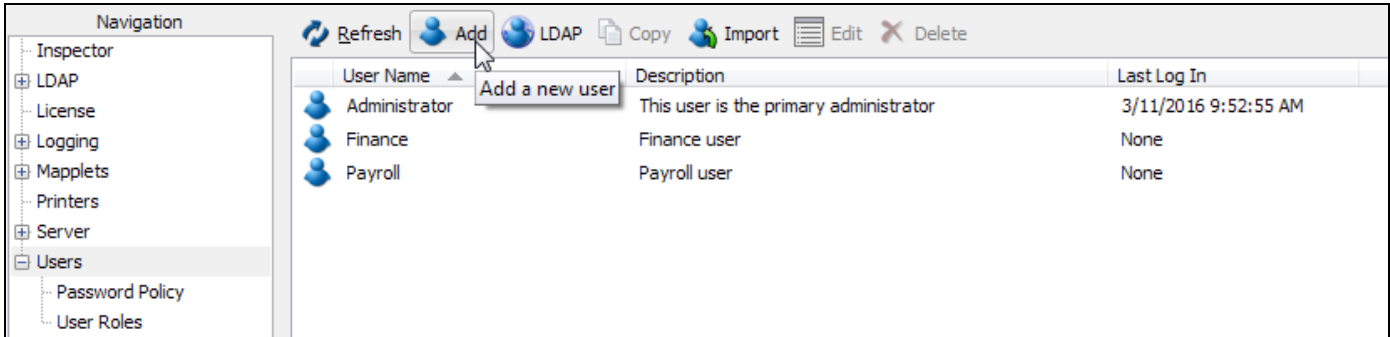
When the installation has finished, you will see that IntelCheck has been added to the list of products on the License screen. Selecting IntelCheck in the list displays detailed license information, including license information for any of the optional modules.

To confirm that IntelCheck has been installed, verify that you see the IntelCheck mapplet on the **Mapplets** screen, and the IntelCheck client application on the **Applications** screen.

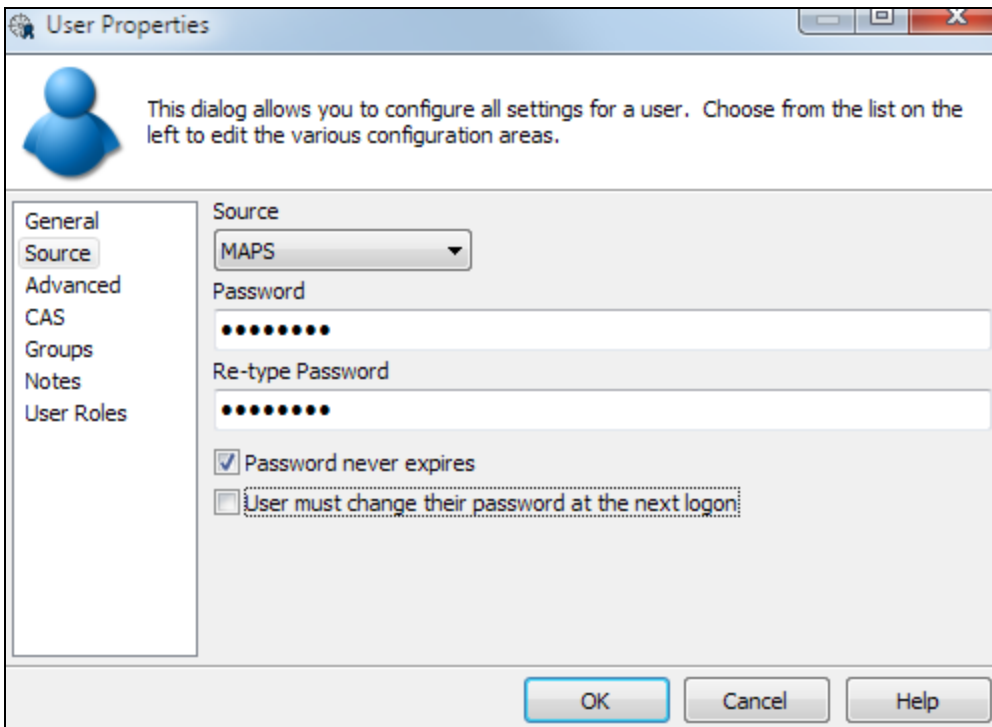
Configure Users and Groups

In order to use IntelCheck, you will need to add some users to MAPS. You can either add users individually, or as part of an LDAP group. For full details on adding users and groups, refer to the [MAPS Help](#).

IntelCheck requires the use of a user named "evisions". To create this user in MAPS, go to the **Users** screen and click the **Add** button.

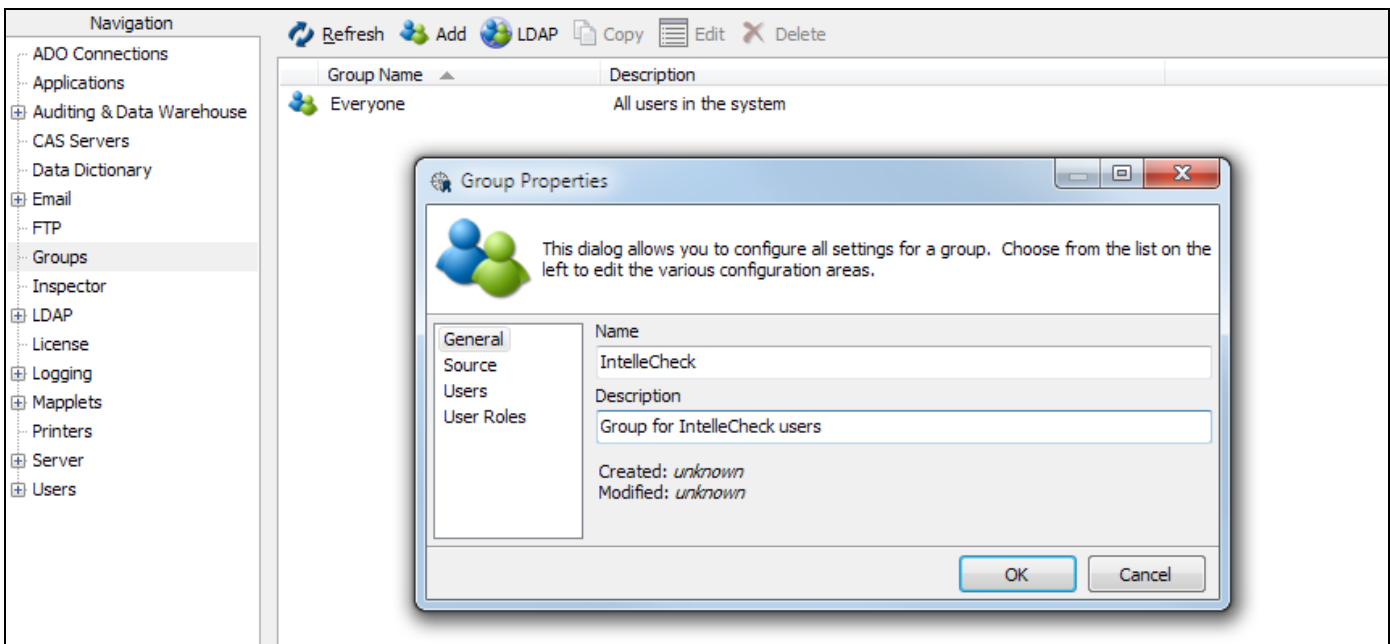


Enter "evisions" as the username on the **General** screen. On the **Source** screen, enter the password for this user. If this will be the actual password, uncheck the box that requires the user to change their password at next logon.

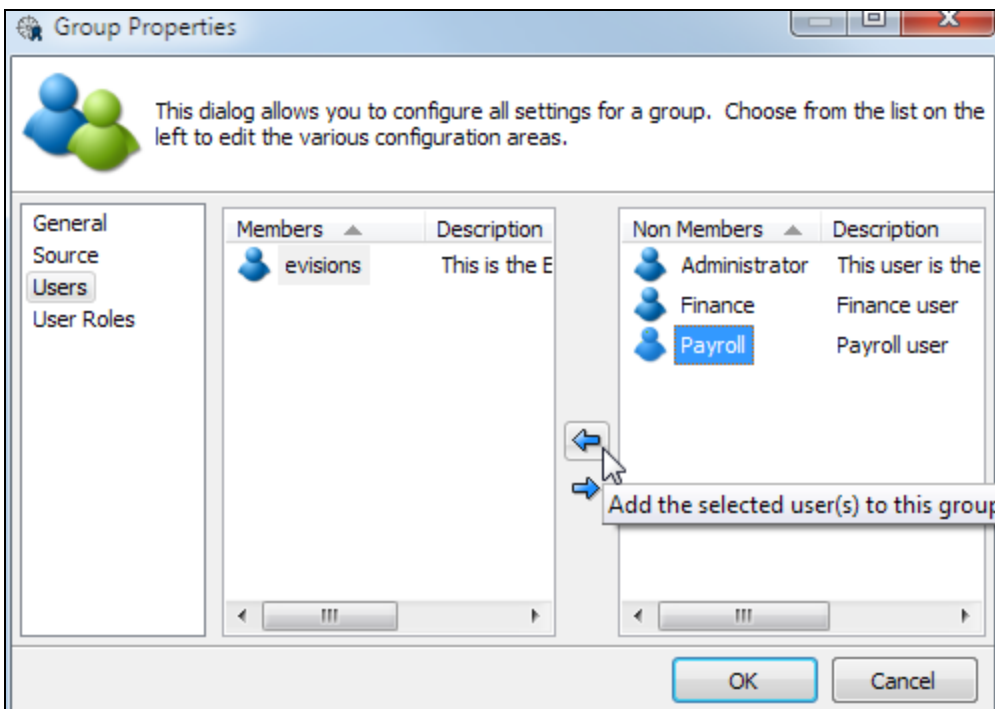


Add any additional users you wish to add at this time. When finished, go to the **Groups** screen to configure your IntelCheck group(s).

Click the **Add** button to add a new group.



Within the Group Properties dialog, go to the **Users** section. Add the "evisions" user to the **Members** list by selecting this user from the list of non-members and then clicking the arrow button. The "evisions" user will now appear in the list of group members.



You may also add additional users to the IntelleCheck group at this time. For more information, refer to the [MAPS Help](#).

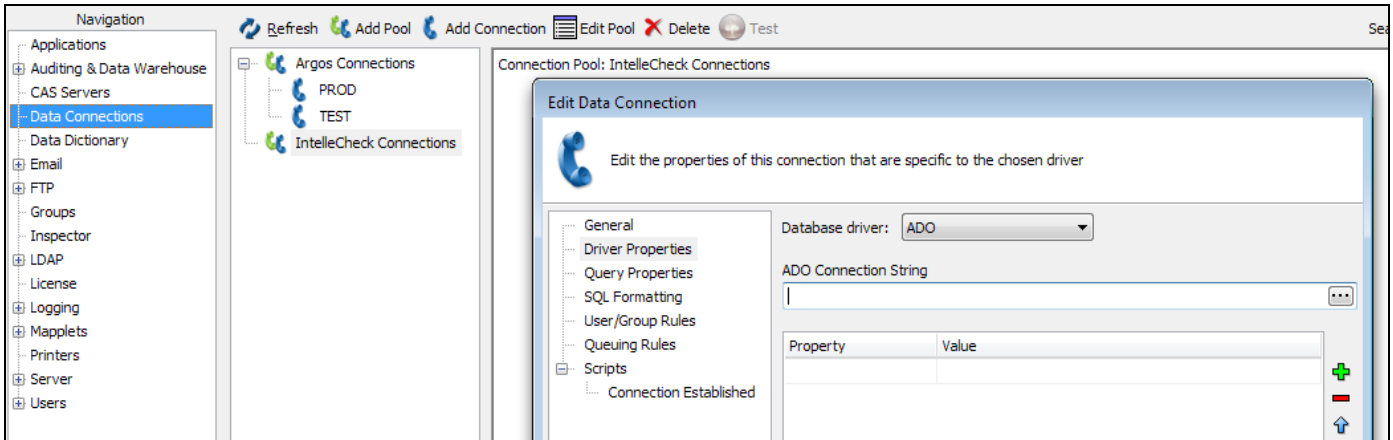
Configure Data Connections

You will need to create a new data connection specifically for IntelCheck for each Oracle instance that you will be using with IntelCheck (you may already have a data connection for a given Oracle instance if you have previously configured it for another product).

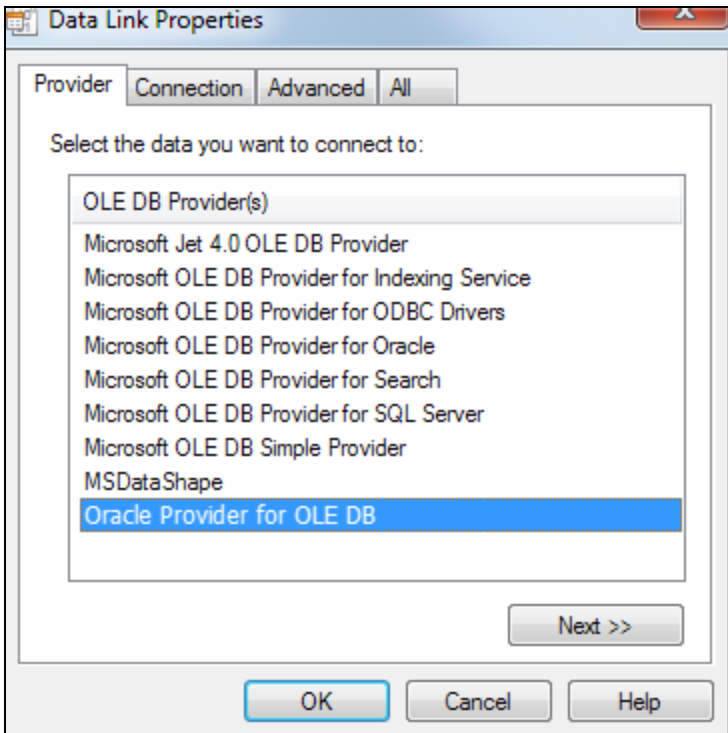
Go to the **Data Connections** screen. After selecting the appropriate connection pool (if any), click **Add Connection**.

Enter a name for this connection (we recommend using the database name), then go to the **Driver Properties** tab. Here, you can choose whether to use an ADO connection or a [native Oracle connection](#), depending on the database provider you are using.

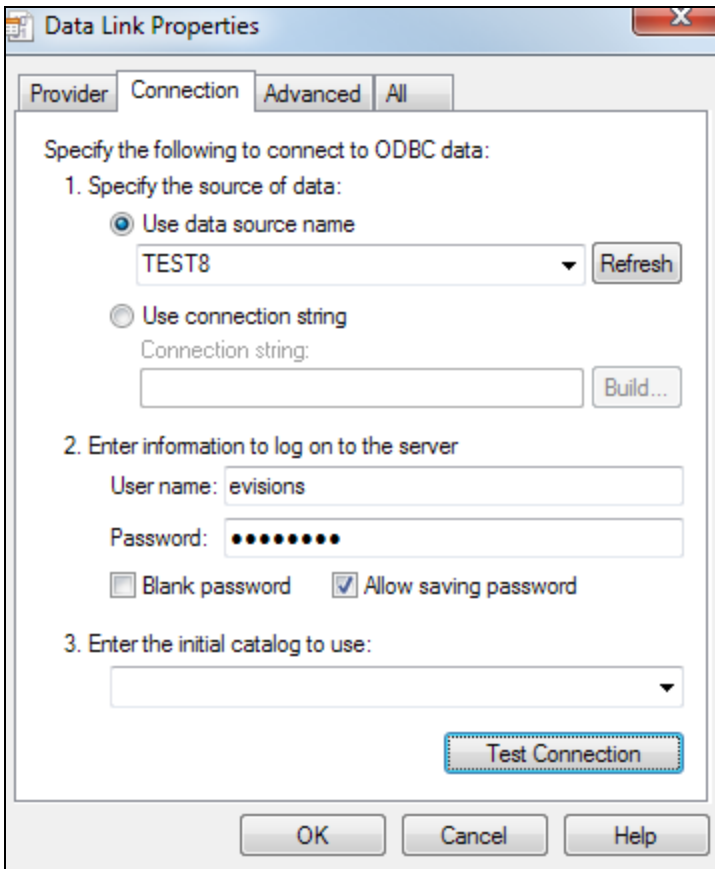
To create an ADO connection, select "ADO" in the drop-down and then click on the ellipsis (...) to build the ADO connection string.



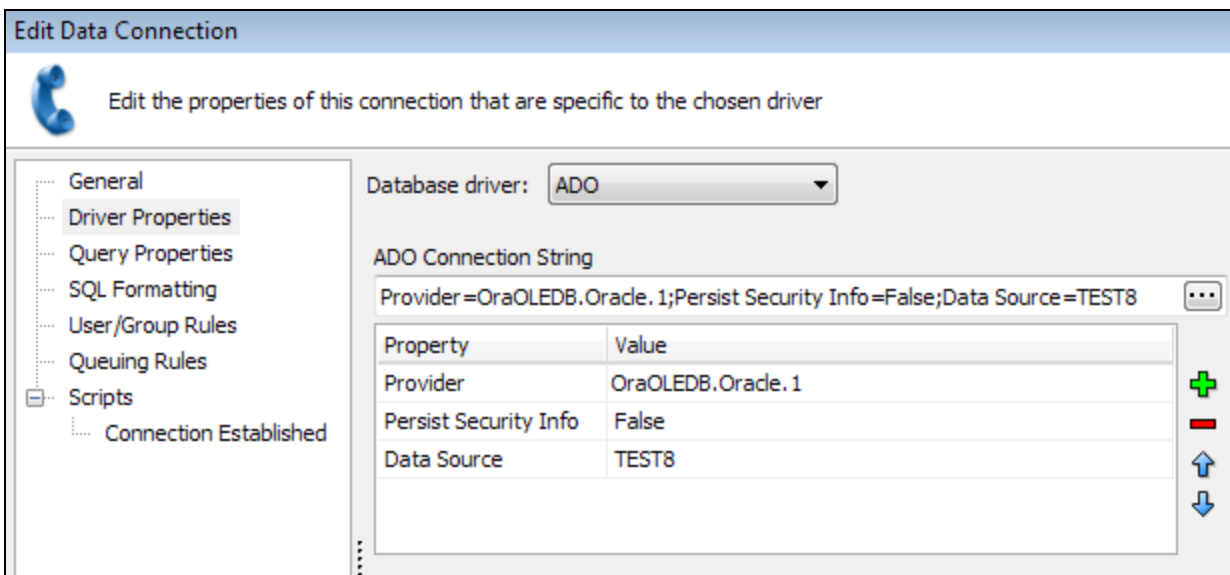
In the Data Link Properties dialog that opens, on the Provider tab, select the Oracle Provider for OLEDB.



On the Connection tab, enter the data source name, and the login information for the `evisions` Oracle user (database user). If you will be using the connection username and password, check the box to allow saving password. You can then use the **Test Connection** button to verify that the data source configuration is correct.



Click **OK** to return to the Edit Data Connection dialog.



If you want to use a native Oracle connection, you would simply select Oracle in the database driver drop-down, and then enter the desired properties. Native connections may be faster than ADO connections for certain types of queries.

Edit Data Connection

Edit the properties of this connection that are specific to the chosen driver

General
Driver Properties
Query Properties
SQL Formatting
User/Group Rules
Queuing Rules
Scripts
Connection Established

Database driver: Oracle

Property	Value
Oracle Home	OraDb11g_home1
Service Name	TEST8
User Name	evisions
Password	<hidden>

- If you have more than one Oracle Home, you may wish to specify which one to use, or leave it set to <use default>.
- The Service Name is the name of your database. This drop-down list is populated based on the databases in your tnsnames.ora file.
- As with ADO connections, you can choose to specify a connection username and password here, or use the credentials defined on the User/Group rules screen (described on the next page) for specific individuals or groups.

Regardless of which Oracle driver you are using, next you will go to the **SQL Formatting** screen and select the appropriate SQL format for your database. In this case, we are selecting Oracle.

Edit ADO Connection

Edit some additional properties of this Database Connection

General
Query Properties
SQL Formatting
User/Group Rules
Queuing Rules
Scripts
Connection Established

SQL Format: Oracle

Join Options

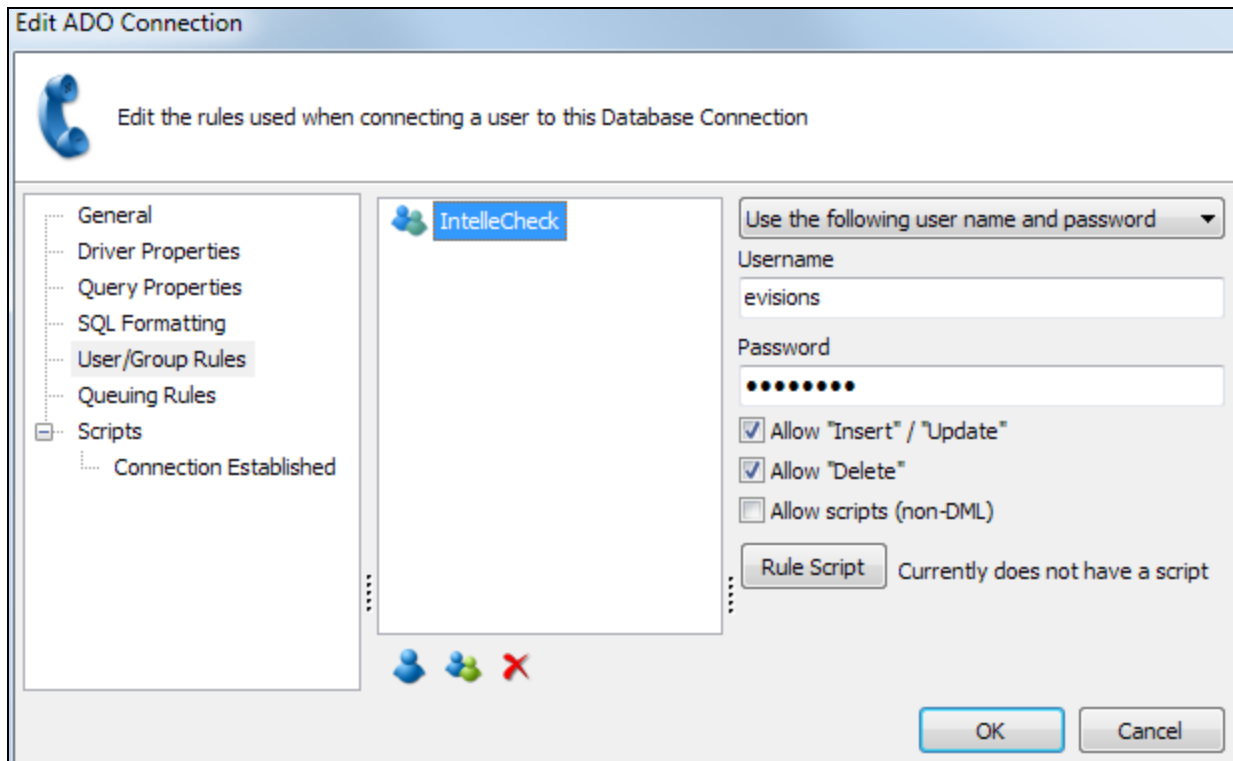
Oracle Style (+) Joins
 Standard ANSI Style Joins


Alias Options


Define Aliases using the AS keyword

Surround Alias with the following character: Double Quote ("name")

Next, go to the **User/Group Rules** screen.



Select the "Everyone" group and click the  button to remove this group from the connection, since we do not want all users to be able to connect to IntelleCheck. Alternatively, leave the "Everyone" group but change the dropdown for this group to "Not allowed to connect".

Use the Add Group  button to select the IntelleCheck group that you just created. If you checked the option to remember the password, you can select "Use connection username and password". Otherwise, select "Use the following username and password" and enter the database login credentials for the Oracle [evisions](#) user below.

Check the boxes to allow insert/update and delete operations to be performed using this connection. You will have the option within IntelleCheck to control which users have permission to perform various functions, but the connection itself must be allowed to perform these operations.

For more information on data connection configuration, refer to the [MAPS Help](#).

Configure Email Servers

Go to the **Email** section, then select the **Servers** page beneath it. This is where you configure the email servers that IntelCheck will use when emailing Direct Deposit advices, file copies, etc. If you have other Evisions Higher Education products, you may already have an email server configured. If not, click the **Add Server** button.

Email Server Properties

This dialog allows you to configure all settings for an SMTP email server.

Server Configuration

Server Name: Evisions Mail Server

Host (IP address): mail.myserver.edu

Port: 25 Use default

Security

SMTP Security Level: (auto detect) Use TLS

User Name: username Password: ●●●●●●

Advanced

Client Name (leave blank to use default):

Maximum Emails Per Minute (0 for no limit): 0

Logging

Log filename (leave blank to use MAPS log): C:\email_log.txt

OK Cancel

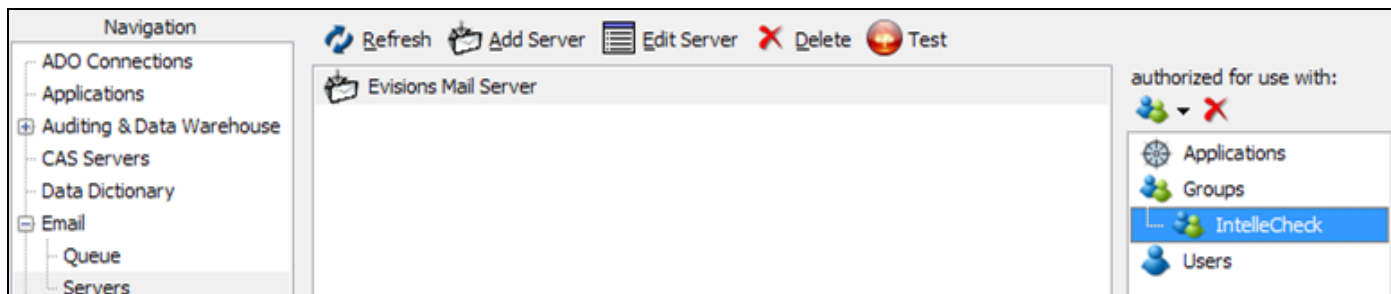
Enter a friendly name for this email server, along with the host or IP address and port number. If you do not know what security method should be used with this email server, leave it set to the default of “auto detect”.

The **username** and **password** should be the credentials for the email account to be used for sending the emails.

If you wish to retain a log of email messages, check the **Logging** box. Email log messages will be included in the MAPS log unless you specify an alternate filename. If you send out a large number of emails, email logging may vastly increase the size of the MAPS log if you do not specify an alternate email log file.

Click **OK** to add the email server.

Select the email server. Right-click in the **authorized for use with** pane on the right, and select **Add Group**. Select the IntelCheck group so that users in this group will be able to use the mail server. You may also add additional users or groups if desired.



Configure Printers

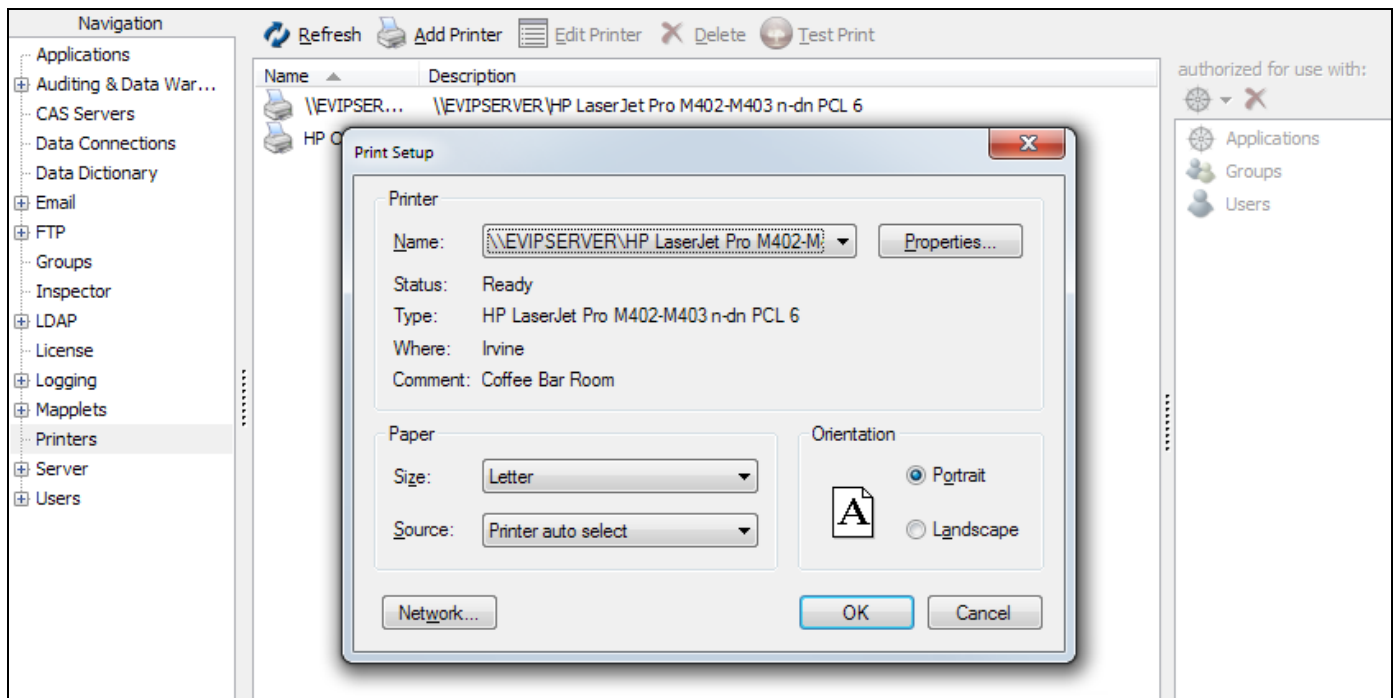
By default, IntelCheck allows users to print to their local printers, as well as to any MAPS printers they have access to that are authorized for use with IntelCheck.

Supported Printers

IntelCheck supports laser printers that are compatible with PCL 5. PCL 6 drivers may or may not also include support for PCL 5. If you are using the [HP Universal Print Driver](#), please ensure that you download the PCL 5 version (6.1) for use with IntelCheck.

Adding Printers to MAPS

To add a printer to MAPS, go to **Printers** in the Navigation pane, then select **Add Printer**. The Print Setup dialog will show you a list of all printers installed on the machine. Select the appropriate printer from the dropdown, then click OK.



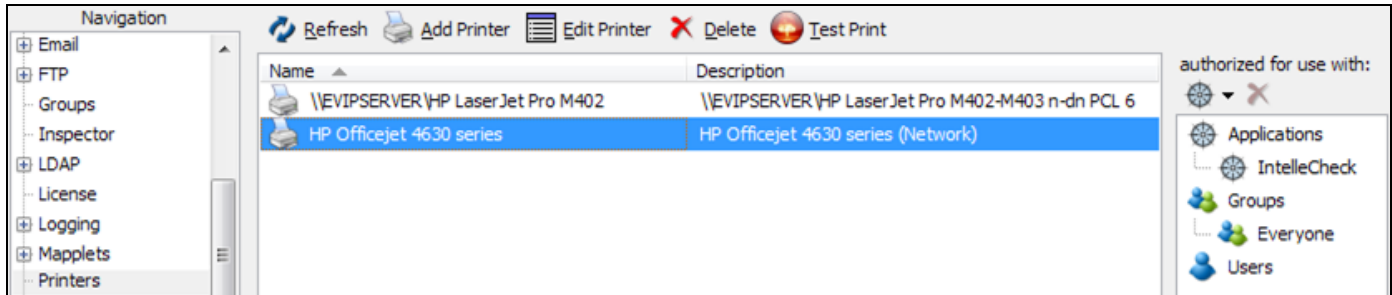
Notes:

- You must add printers from the MAPS server itself, or from a Remote Desktop connection to the server.
- You should log in to the server where MAPS is installed as the [user the MAPS service is running as](#), and this user must have permissions to use the printers you wish to add.
- The printer driver must be installed on your server or installed as a network printer and accessible to MAPS for it to appear in the Print Setup dialog.
- MAPS requires a printer to be added to the server if one doesn't already exist. It can be a dummy printer if no physical printers are connected to the server. In either case at least one printer must be added to the server.

Configure Printers from the Server!

The printers that appear in the dialog are those that are available to the local system. In order for your printers to work correctly, you MUST add printers from the machine where MAPS is installed, or via a Remote Desktop session to this machine.

You can now authorize the printer for use by individual applications, users, and groups. Right-click in the **Authorized for use with** pane on the right (or use the dropdown menu) and choose **Add Application**, **Add Group**, or **Add User**. These options open a list of available users, groups, or applications that can be authorized for use with the selected printer.



In this example, use of the HP Officejet 4630 printer is limited to the IntelleCheck application, and is available to all users (the "Everyone" group) who use IntelleCheck. To restrict access to specific users or groups, authorize those users or groups individually instead of using the "Everyone" group.

To verify that the printer was added to MAPS successfully, select the printer and then click the Test Print button at the top of the screen to send a test page to the printer.

If you run into any problems adding your printers, refer to the [Troubleshooting](#) section of the MAPS Help.

Printer Configuration by Account Code

The **Administration** -> **Account** area of IntelCheck allows you to specify per account code whether users are allowed to print payments to their local printers or to specific MAPS printers. This gives you fine-grain control over which payments can be printed to which printers.

The screenshot shows a configuration window titled "Account Code" with a dropdown menu set to "10 (AP: Bank 1)". Below this is the "Custom Check Fields" section, which includes a dropdown menu, a text input field containing "< choose field to the left >", and checkboxes for "Display" and "Mask Data". The "Search and Replace (for file copies)" section features a large empty text area on the left, a "Search for" input field with a green plus icon, and a "Replace with" input field. The "Printer Security" section contains two checkboxes: "Users can print to their local printers." (checked) and "Users can print to the MAPS printers selected below." (unchecked). Below the second checkbox is a large empty text area. At the bottom, there are two more checkboxes: "Prepend with P.J.L command" (unchecked) and "Suppress PCL clear command." (unchecked), with a text input field next to the first one.

For maximum security, you may wish to only allow users to print checks to specific designated printers that are in a secure physical location.

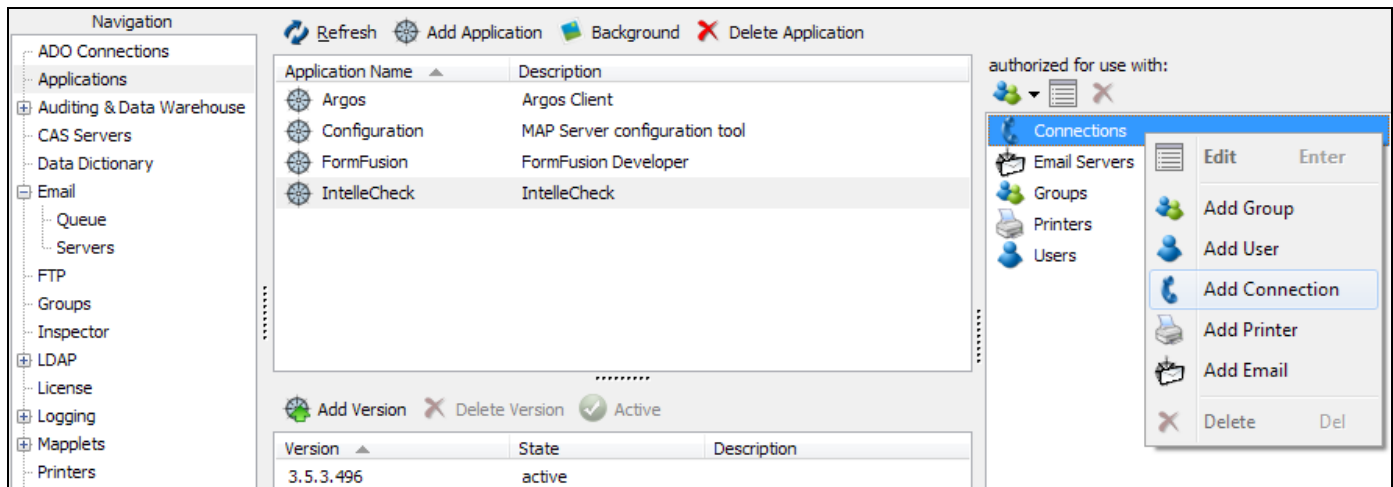
Add Authorizations for IntelleCheck

The final step in the MAPS configuration is to authorize the users, groups, data connections, printers, and email servers that you just added so that they can be used with IntelleCheck.

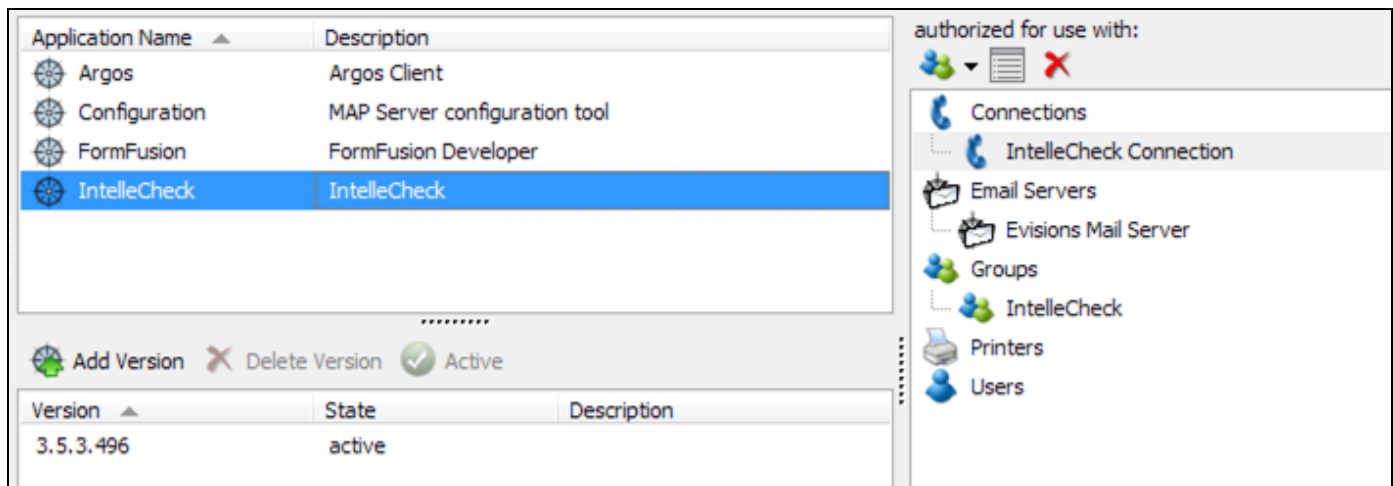
Go to the **Applications** screen and select the IntelleCheck application.

If you do not see IntelleCheck in the list of applications, click the **Check for Updates** button at the bottom of the configuration tool. You should see a message asking if you want to install IntelleCheck. Click Yes to add IntelleCheck to MAPS.

Right click anywhere in the **authorized for use with** pane on the right and select **Add Connection**.



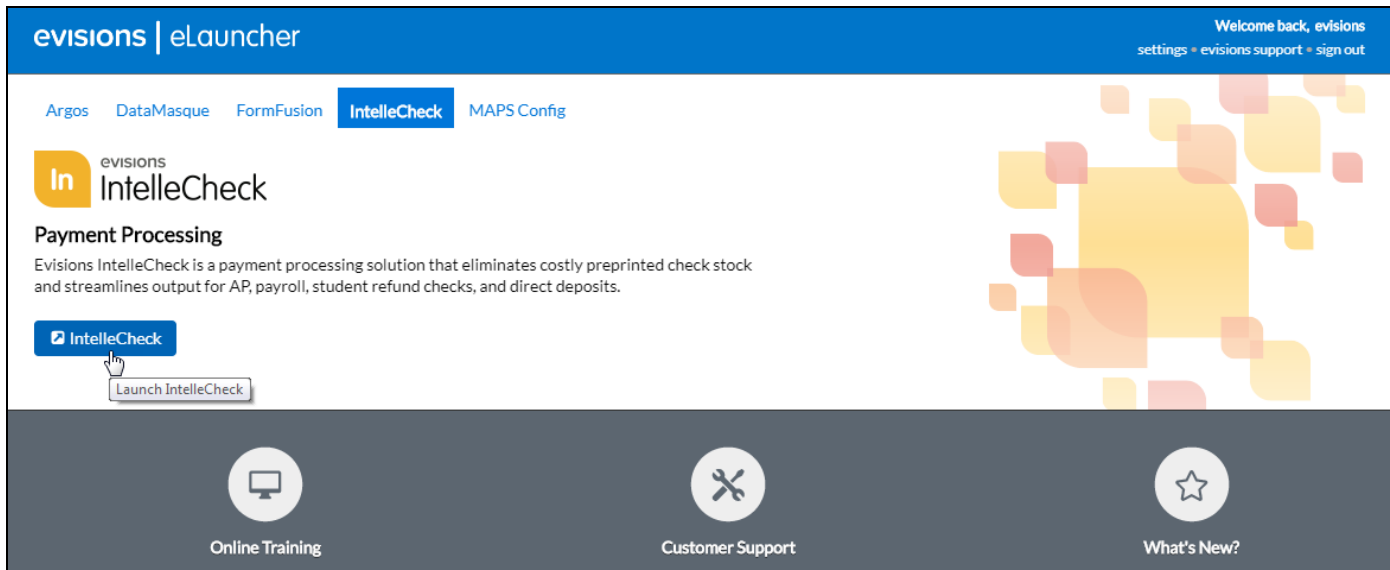
Select the data connection(s) that you added earlier, then click **OK**. In a similar manner, add the IntelleCheck group, any individual users that you want to be able to use IntelleCheck, and the email server.



The MAPS configuration for your IntelleCheck installation is now complete.

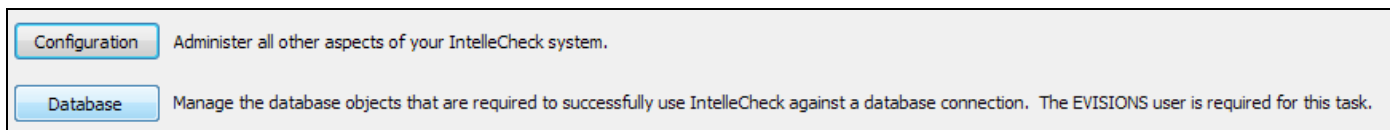
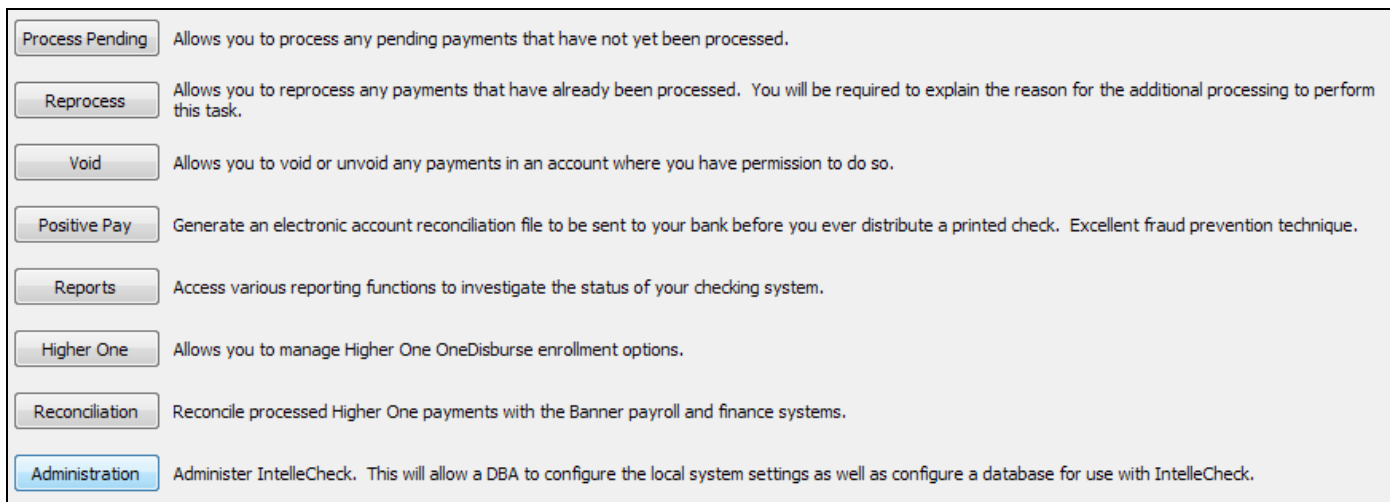
Step 3: Create the IntelleCheck Tables

Delete this text and replace it with your own content. Launch IntelleCheck from your web browser, using the URL described in Step 2.



If prompted to select a version, choose the desired version (typically the newest). Note: You can control which versions appear in this list on the Applications screen in MAPS. If only one version is currently active, you will not be prompted to choose a version.

From the IntelleCheck main menu, choose **Administration** and then go to **Database**.



You will then be prompted to log in to the database.

The username defaults to “evisions” for table maintenance. Enter the password for the MAPS “Evisions” user. Select the data connection for the Oracle instance that you wish to create the IntellectCheck tables for. If you do not see any data connections listed, click the **Refresh** button.

Select **Create Objects**. You will be prompted to select a path to export the table creations scripts to.

Enter the desired path, then select **Extract All**. When complete, select **Finish** to continue.

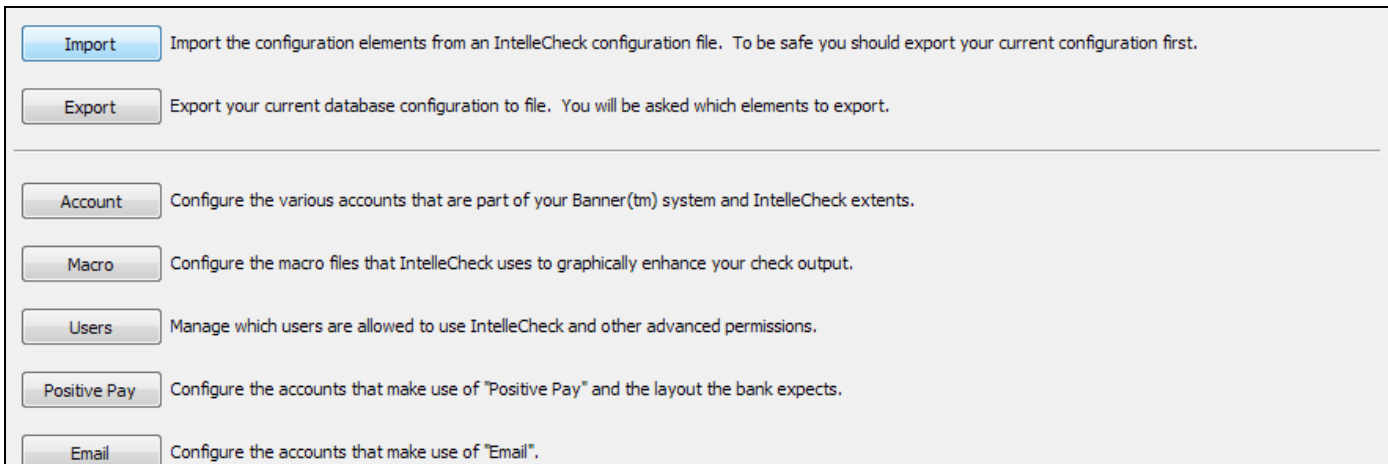
Before each new table is created, you will be given an opportunity to review or modify the script. If you wish to use the default scripts, you can select **No to All** and you will no longer be prompted.

Repeat for Additional Oracle Instances

Repeat Step 3 to create the IntellectCheck tables for each Oracle instance that you wish to use with IntellectCheck.

Step 4: Configure IntelleCheck

From the main IntelleCheck menu, select **Administration** and then **Configuration**.



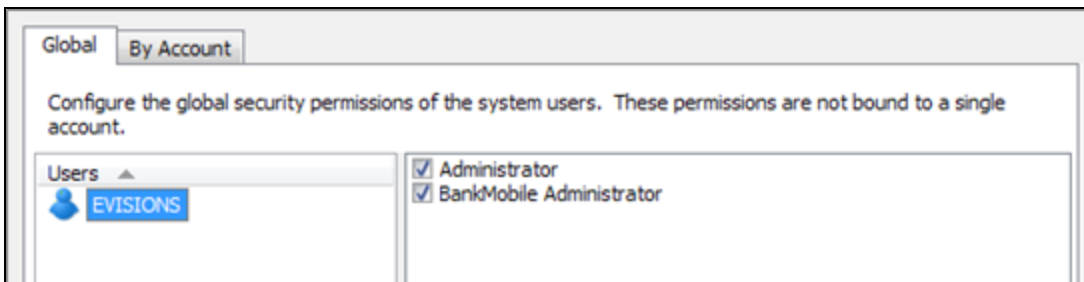
Import Configuration File

You will now need to import the setup file that was provided to you by Evisions (.icc file). Note: If this is NOT a first-time IntelleCheck installation for this database instance, it is recommended that you export your current configuration before importing the configuration file.

Click the **Import** button to select the file. If you were provided with multiple configuration files, please perform the import step for each of the files in the order that they were provided to you.

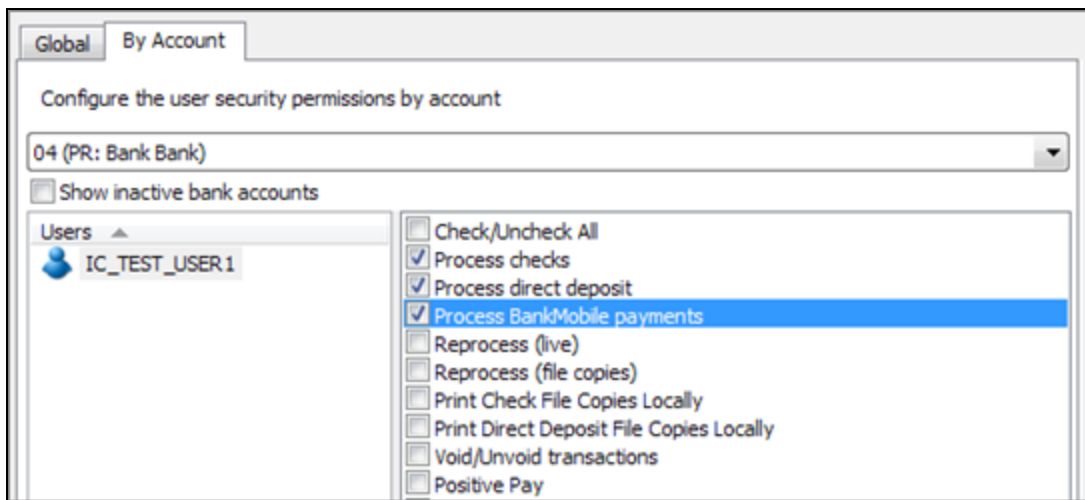
Configure Users

Select the **User** button to manage which users will have access to the various AP and/or Payroll accounts. You can add or remove users by selecting the user and clicking the blue arrows.



The users displayed on the **Global** tab are IntelleCheck and/or BankMobile administrators. Administrator privileges are required in order to access the Configuration area. BankMobile administration privileges are required in order to access the BankMobile configuration area.

Users listed on the **By Account** tab only have permission to use the accounts that they are added to. On this screen, first select the account (bank code for AP or pay ID for Payroll) you want to manage. The accounts are automatically pulled from your Banner tables for both AP and Payroll. The Users list underneath the account dropdown shows the list of all users who have access to this account. To add a user, select them in the **Existing Users** list on the left, and then click the right arrow button to move them to the list of users.



You can add or remove account options by checking or unchecking the boxes on the right. Each option grants a specific permission for this account, such as the ability to process checks, process direct deposits, perform reconciliation, etc.

You will need to repeat this step for each account that you wish to manage.

Configure Email

If you purchased the option to email direct deposit advices, you will need to refer to the Email section of the IntellectCheck Administrator Guide to complete the setup. The IntellectCheck Administrator Guide is located within the [IntellectCheck Help](#).

Repeat for Additional Oracle Instances

If you will be using IntellectCheck with more than one Oracle instance, repeat Step 4 to perform the IntellectCheck configuration for each Oracle instance that you wish to use with IntellectCheck.

Step 5: Install IntelCheck Files on the Banner Server

Depending on which IntelCheck modules you have purchased, Evisions will provide you with one or more source code files that you will need to copy to your Banner® server. It is recommended that you create a separate directory to keep the IntelCheck files in, so that you can find them easier when they need to be updated.

- `fabchkp.pc` – AP
- `fardird.pc` – AP direct deposit
- `phpchk1.pc` – Payroll checks and/or direct deposit

UNIX Installation

1. Create a directory called “evisions” under the home directory of the “banner” user on your UNIX host and place the `fabchkp.pc`, `fardird.pc` and/or `phpchk1.pc` files there. When you FTP the files over, please make sure you are using an ASCII transfer method (not binary) to prevent compilation issues.
2. Log in to your UNIX host as the “banner” user (or your equivalent if you do not have a “banner” user) and navigate to the directory that you placed the files in.
3. The `fabchkp.pc`, `fardird.pc` and `phpchk1.pc` files that Evisions provides are customized versions of the baseline Banner files of the same name. Before proceeding, back up the baseline files, which should be located in your `$EXE_HOME` directory (or `$BANNER_HOME/general/exe`), as they will be overwritten during the next step. **Note:** Make sure you are pointed to the proper Oracle SID and Banner environment (codetree) before you perform the backup.

Type the following commands to back up the files:

```
cp $EXE_HOME/fabchkp $EXE_HOME/fabchkp_backup
cp $EXE_HOME/fardird $EXE_HOME/fardird_backup
cp $EXE_HOME/phpchk1 $EXE_HOME/phpchk1_backup
```

Note: Use the `cp` command, NOT `mv`. Using `mv` will affect the links (indirectly) and could cause problems in the future.

Before proceeding, verify that the files have been successfully backed up. You should also verify that you are still pointing to the correct Oracle SID and Banner environment.

4. Compile the new Evisions version of `fabchkp.pc`, `fardird.pc` and/or `phpchk1.pc` using the following commands:

For AP checks:

```
make -f $BANNER_HOME/general/c/sctproc.mk fabchkp
```

For AP direct deposits:

```
make -f $BANNER_HOME/general/c/sctproc.mk fardird
```

For Payroll checks/direct deposits:

```
make -f $BANNER_HOME/general/c/sctproc.mk CHECKOPT="sqlcheck=full
userid=baninst1/password" phpchk1
```

Note: These commands are all one line. Where noted, replace “password” with your password for baninst1.

If the compilation was successful, you will see the new executables in the `$EXE_HOME` directory.

Troubleshooting Compile Issues

If the IntelCheck tables were not created successfully in Step 3, you may receive compile errors such as “`identifier 'EVIBCCHK' must be declared`”.

If you have any problems or questions, please [contact Evisions Support](#) and we will be happy to assist.

NT Installation

1. Create a directory called "evisions" on the Banner server and place the `fabchkp.pc`, `fardird.pc` and/or `phpchk1.pc` files in it.
2. The `fabchkp.pc`, `fardird.pc` and `phpchk1.pc` files that Evisions provides are customized versions of the baseline Banner files of the same name. Before proceeding, back up the baseline executable files, which should be located in your `%BANNER_EXE%` directory, as they will be overwritten during the next step. From Windows Explorer, copy `fabchkp.exe`, `fardird.exe` and/or `phpchk1.exe` and name them `fabchkp_backup.exe`, `fardird_backup.exe` and/or `phpchk1_backup.exe`.

Before proceeding, verify that the files have been successfully backed up. You should also verify that you are still pointing to the correct Oracle SID and Banner environment.

3. Open a command prompt on the server and navigate to the directory where you copied the Evisions versions of the source files.
4. Compile the new Evisions version of `fabchkp.pc`, `fardird.pc` and/or `phpchk1.pc` using the following commands:

For AP checks:

```
perl %BANNER_HOME%\general\misc\sctproc.pl -prog="c:\evisions\fabchkp.pc"
```

For AP direct deposits:

```
perl %BANNER_HOME%\general\misc\sctproc.pl -prog="c:\evisions\fardird.pc"
```

For Payroll checks/direct deposits:

```
perl %BANNER_HOME%\general\misc\sctproc.pl -prog="c:\evisions\phpchk1.pc" -checkopt=full
```

Note: These commands are all one line. Where noted, replace "password" with your password for baninst1.

If the compilation was successful, you will see the new executables in the `%BANNER_EXE%` directory.

Troubleshooting Compile Issues

If you receive compile errors, please make sure that `SQLCHECK` is set to `LIMITED` in the `sctproc.pl` compile script.

If the IntelleCheck tables were not created successfully in Step 3, you may receive compile errors such as "`identifier 'EVIBCCHK' must be declared`".

If you have any problems or questions, please [contact Evisions Support](#) and we will be happy to assist.

Step 6: Test Your Installation

1. To test your installation, run checks in Banner as normal. Once the [fabchkp](#), [fardird](#), or [phpchk1](#) process is complete (depending on whether you are testing AP or Payroll checks), launch IntelleCheck and click on the **Process Pending** button. Then, log in to the database you are using.

Troubleshooting

If you receive a message that says “There are no checks to print” after logging in, there are several things to check:

- Make sure that you are logging in to the same database in IntelleCheck that you processed the checks for in Banner.
- Make sure that the user logging in to IntelleCheck has been granted access to the account for which checks were processed ([Step 4](#)).
- Review the log file in the jobsub directory to look for error messages. If you see a message in the log file similar to “0 lines written to [fabchkp_12345.lis](#)”, this means that Banner did not produce any check output.
- If the log file contains a “table or view does not exist” error, make sure that the IntelleCheck tables have been created for this database ([Step 3](#)).

2. Once you are in the Process Pending area, select the appropriate bank code/account and batch using the drop-down boxes, then click **Next**.
3. IntelleCheck will show you all of the checks that have not yet been printed for the selected account and batch. Click **Select All** and then click **Next**.
4. Select the printer where the checks should be printed.
5. If desired, check the box to **Print File Copy** and select an appropriate printer. File copies are typically printed to a different printer than the checks, in order to conserve the MICR toner used for checks.
6. If you have Positive Pay configured for this account, you can select the **Generate Positive Pay** box and enter the desired filename to have IntelleCheck create the Positive Pay file when it prints the checks. If Positive Pay is not set up for this account, the option will be grayed out.
7. If desired, check the option on the **Reporting** tab to generate a check register or check summary report.
8. Click **Process**. The checks will be sent to your chosen printer, and you will be returned to the main menu in IntelleCheck.

Getting Help

For information on using the software, please refer to the product Help, which contains detailed information on all aspects of the product.

If you are having problems with the installation or configuration, you can search our [support site](#), which includes a knowledge base of common issues. If you are unable to find the solution, submit a HelpDesk request with a detailed explanation of the problem you are experiencing.

Please do not hesitate to contact the Evisions HelpDesk if any questions or problems arise. We are here to help you and want to ensure your success.

Can't find what you're looking for?

We would love to make our documentation better! If you have a moment to let us know what we missed or how we can make the help more useful, please email us at TechDocs@evisions.com.

Glossary

A

Argos

Evisions' web-enabled reporting solution.

B

BankMobile

BankMobile is an optional module within IntellectCheck. Evisions has integrated IntellectCheck with BankMobile Disbursements (formerly HigherOne OneDisburse) for easy processing of electronic refunds. For more information, please visit www.bankmobiledisbursements.com.

F

FAABATC

Batch Check Print Form.

FAAONLC

Online Check Print Form.

FABCHKA

Batch Check Accounting Process.

FABCHKP

The check print process in the Banner® Finance module. The code for this process is modified by Evisions for use with IntellectCheck.

FABCHKR

Batch Check Register.

FABCHKS

Batch Check Process.

FAPDIRD

Direct Deposit File Creation Process (Canada uses FAPCDIR).

FAPTREG

Direct Deposit File Register.

FARDIRD

The direct deposit process in the Banner® Finance module. The code for this process is modified by Evisions for use with IntellectCheck.

FARINVS

Invoice Selection Report.

FGRACTG

Posting Process.

I

ICC File

IntelleCheck Configuration (ICC) files contain the macros that create the visual information on your checks (logos, signatures, boxes, etc.), email layouts, and positive pay layouts.

IntelleCheck

IntelleCheck is Evisions' solution for Ellucian's™ Banner Digital Campus payment processing. IntelleCheck seamlessly integrates with Banner and enhances Banner output for AP, Payroll, Student Refund checks and Direct Deposit Advices.

M

MICR Font

Magnetic ink character recognition used by banking industry to facilitate the processing of checks.

P

PHPCHKL

The check print and direct deposit process in the Banner® Human Resources module. The code for this process is modified by Evisions for use with IntelleCheck.

PJL command

Printer Job Language command.