



Multiple Application Platform Server

Reporting Against MAPS and Argos Data-bases

Product version 6.11.1

Last updated 6/7/2024

Table of Contents

Introduction	5
Overview of the MAPS and MAPS Application Databases	6
Connecting to the Databases	6
Using the Data Warehouse	11
Joining the MAPS and Argos Databases	12
MAPS Database Tables	17
General	19
DeliveryFile	23
Data Connections	25
Applications	28
Mapplets	31
Users, Groups, and Roles	32
SsoToken	37
SsoMethodPropertyName	37
SsoMethodPropertyValue	37
Resources	38
Data Dictionary	40
MAPS Auditing Database Tables	43
General	44
Argos Database Tables	45
General	48
Session Data	50
Library of Objects	50
User Settings	51
Security and Permissions	53
Folders	56
DataBlocks	57
Reports	60
Schedules	62
Data Warehouse Tables	66
General	67
Data Connections	67
Users, Groups, and Roles	69
Security and Permissions	71
Folders	73
DataBlocks	74
Reports	75

Schedules	76
Auditing	79
AuditProperty	79
Database Change History	80
6.11	80
MAPS Database	80
6.10.2	80
MAPS Database	80
6.10	80
MAPS Database	80
6.8.1	80
Argos Database	80
6.8	80
6.7	80
Argos Database	80
6.6	81
6.5	81
6.4	81
6.3	81
6.2	81
6.1.1	82
6.1	82
6.0	82

Trademark, Publishing Statement, and Copyright Notice

© 1998-2024 Evisions. All rights reserved.

This software and related documentation are provided under a license agreement containing restrictions on use and disclosure and are protected by intellectual property laws. No part of this document may be reproduced, stored in or introduced into a retrieval system, or transmitted in any form or by any means (electronic, mechanical, photocopying, recording, or otherwise), or for any purpose, without the express written permission of Evisions.

The information contained herein is subject to change without notice and is not warranted to be error-free. Product features referenced herein for a period of time may not match product contents. Evisions does not warrant that the functions contained in the software will meet your requirements or that the operation of the software will be uninterrupted or error free. Evisions reserves the right to make changes and/or improvements in the software without notice at any time.

This software and documentation may provide access to or information on content, products, and services from third parties. Evisions and its affiliates are not responsible for and expressly disclaim all warranties of any kind with respect to third-party content, products, and services. Evisions and its affiliates will not be responsible for any loss, costs, or damages incurred due to your access to or use of third-party content, products, or services. Evisions does not endorse the content or developer of any products or web sites mentioned.

All information in this guide is designed for instructional purposes only. Evisions makes no guarantees regarding the accuracy or performance of any techniques used in this guide. Software configurations and environments may vary, and some techniques used in this guide may not operate efficiently under all configurations. This guide may contain examples of various technologies or products, which are the sole property and responsibility of their creators.

Trademarks are the property of the respective owners for any products mentioned herein.

Introduction

Evisions' software uses databases to store object definitions, users, folders, permissions, etc. Many of our clients have expressed interest in creating Argos reports against these databases. In general, Evisions does not support or recommend building reports against the MAPS and Argos databases for the following reasons:

- The databases are in constant use by the system and can suffer performance degradation due to external reporting or even data corruption (if updated improperly).
- As the products evolve, the databases are also changing. Reports built against one version of the databases may not work after an update is applied.
- Our products are designed to be both forward and backward compatible. Since the databases change from version to version, it is impractical to document all possible combinations of database versions.

Beginning in MAPS 4.x, there are some alternative ways to retrieve information from the databases:

- The Auditing feature contains a significant amount of information about the system, how it is being used, etc. If clients require more information about the contents of these databases, we would prefer this be added to the Auditing feature so it would be available to other clients as well.
- MAPS 4.3 includes a data warehouse, which copies many of the tables from both the MAPS and Argos databases. You can configure the data warehouse to copy data nightly or manually as needed. By reporting against a copy of the databases, you avoid any performance hits against your production databases, as well as the risk of data corruption. The data warehouse is specifically designed for reporting, so the table structure is somewhat simplified and easy to report against. There is also less need to worry about changes to the database structure, as future changes are likely to be additions rather than changes to existing structures.

Despite the warnings above, you may still wish to create reports directly against the MAPS and Argos databases. To that end, we're providing this guide as a courtesy to our valued customers. It contains the following information:

- Information on how to create connections to the various databases.
- Entity-Relationship diagrams to help designers visualize the database structure and table relationships.
- Table and Field descriptions for all tables.

Note: Where possible, we recommend using the data warehouse (provided in MAPS 4.3 and higher) for your reporting needs. This database contains the majority of the information from the MAPS and Argos databases, and should be used in most situations where you do not require real-time data.

Important Note Regarding Changes to the Databases

The 4.x update to the MAPS platform included a change from Microsoft JET databases to SQLite databases. Significant changes were also made to the tables and fields within the databases. Reports created using previous versions of the databases are likely to require significant modification. The database connections will also need to be changed.

While we strive to provide you with accurate documentation, we make no guarantees with respect to the accuracy of this information. We reserve the right to change the database structure, tables, fields and underlying technology without prior notification.

Overview of the MAPS and MAPS Application Databases

Databases covered by this documentation include:

1. **MAPSData.sqlite** – MAPS data (not specific to any application)
`C:\Program Files\Evisions\MAPS\Service`
2. **ArgosData.sqlite** – Argos data
`C:\Program Files\Evisions\MAPS\Service\Mapplets\Argos`
3. **MAPSDataWarehouse.sqlite** – Copy of commonly-used data from both MAPS and Argos
`C:\Program Files\Evisions\MAPS\Service`

If your reporting needs require real-time data from both the MAPS and Argos databases, see [Joining the MAPS and Argos Databases](#).

Database Location

Your databases may be in a different location if you have installed MAPS someplace other than the default installation directory.

Connecting to the Databases

The following steps are required to create a connection to any of the MAPS databases. You must perform these steps on the machine where MAPS is installed (or use Remote Desktop to log in to that machine). You should never create or modify database connections from a different computer.

Bit Versions

32-bit MAPS installations require the 32-bit SQLite ODBC driver and 32-bit ODBC Data Source Administrator tool, while 64-bit MAPS installations require 64-bit SQLite ODBC driver and 64-bit ODBC Data Source Administrator tool. To determine whether you are running MAPS 32-bit or 64-bit version, please refer to the MAPS Service 'bit' version listed in the MAPS Diagnostics page.

Driver Installation

We have tested with version .994 available from <http://www.ch-werner.de/sqliteodbc>.

32-Bit Installation

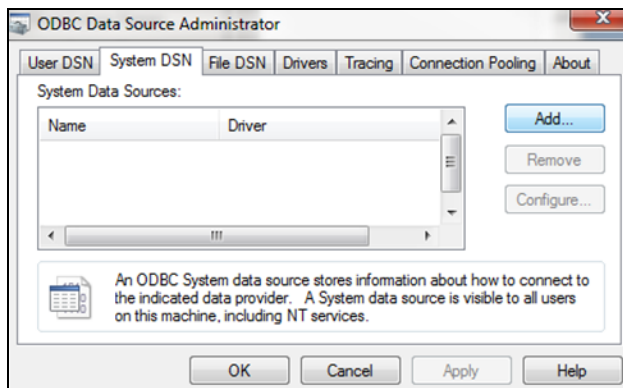
If the 32-bit version of the ODBC Data Source Administrator is needed it can typically be found at
`C:\Windows\SysWOW64\odbcad32.exe`.

Creating the MAPS Data Warehouse SQLite File

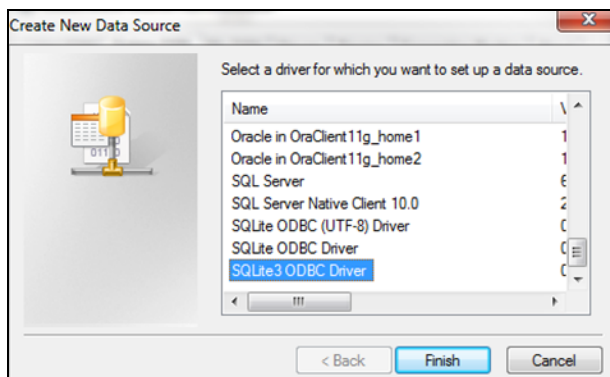
When MAPS is first installed, the MAPSDataWarehouse.sqlite file will be absent from the Service folder (C:\Program Files (x86)\Evisions\MAPS\Service for 32-bit, or C:\Program Files\Evisions\MAPS\Service for 64-bit). To create this file, navigate to the **Data Warehouse** section of the **Auditing & Data Warehouse** tab in MAPS Config. Select the **Migrate Now** button to create the MAPSDataWarehouse.sqlite file.

Creating the Data Source

Next, you need to create a data source. Launch the ODBC Data Source Administrator and go to the **System DSN** tab.



Click the **Add** button, then select the **SQLite3 ODBC Driver**.



After selecting the driver and clicking Finish, the SQLite3 ODBC DSN Configuration dialog appears. Enter a **Data Source Name**, click the **Browse** button, then select the database name (C:\Program Files (x86)\Evisions\MAPS\Service\).

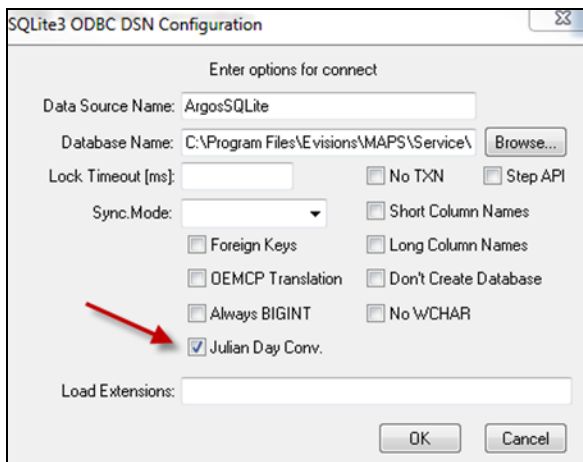
For 32-bit: (C:\Program Files\Evisions\MAPS\Service\MAPSData.sqlite, C:\Program Files\Evisions\MAPS\Service\MAPSDataWarehouse.sqlite, or C:\Program Files\Evisions\MAPS\Service\Mapplets\Argos\ArgosData.sqlite).

Data Source Names

You may enter any name you like for the data source name; however, if you intend to join the MAPS and Argos databases using the technique described in this document, you must enter ArgosSQLite and MAPSSQLite as the data source names for these two databases. This is because the Microsoft JET database we provide expects these data source names. See [Joining the Databases](#) for instructions.

You can use any data source name you like if you do not intend to join the live MAPS and Argos databases, or for connecting to the data warehouse database.

Be sure to check the **Julian Day Conv.** box, otherwise dates will not be displayed.



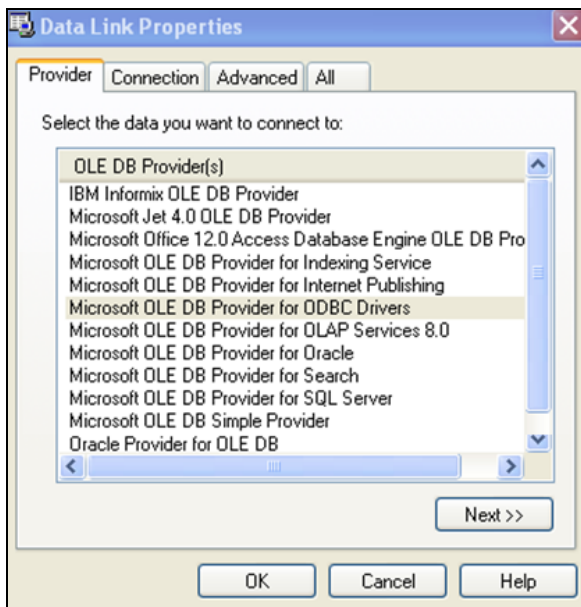
Click **OK** to complete the configuration.

You can follow the same procedure to create a connection to the MAPS-specific database.

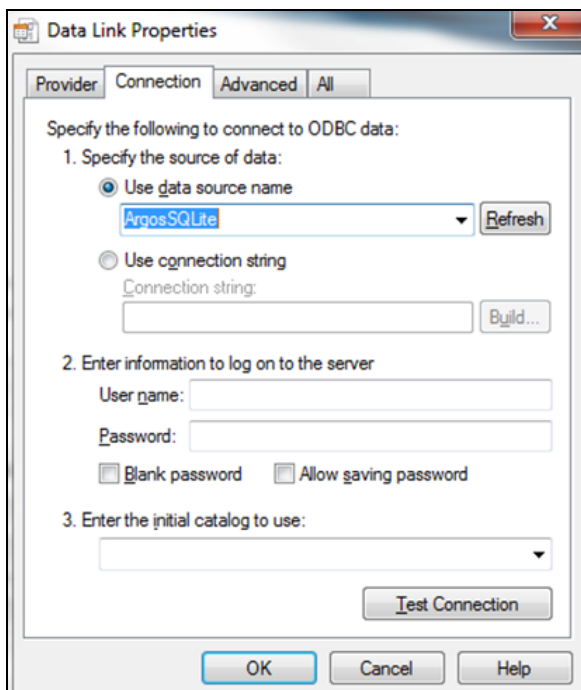
Creating the Connection in MAPS

If you plan to use Argos for reporting, launch the **MAPS Config** application and create a data connection as follows.

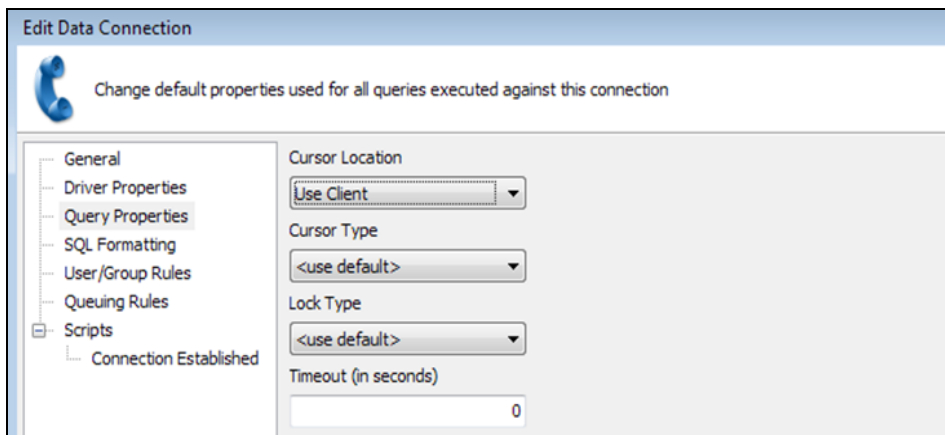
Select **Microsoft OLE DB Provider for ODBC Drivers** as the database provider.



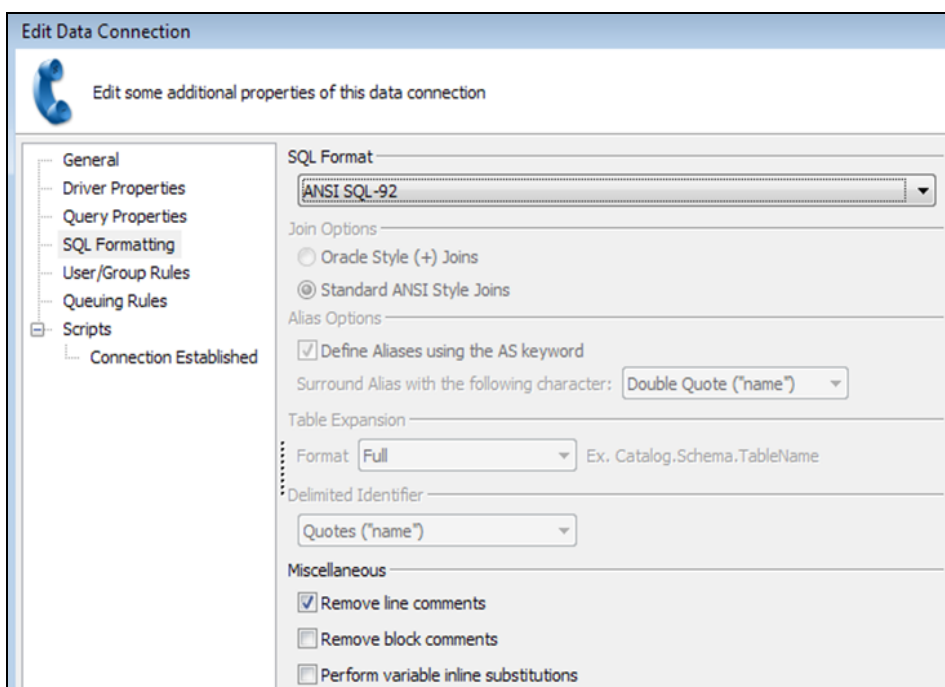
Select the **SQLite3 data source** that was created in the ODBC Data Source Administrator dialog in the previous step.



Set the **Cursor Location** to Use Client. You may not see all data if this is not set appropriately.

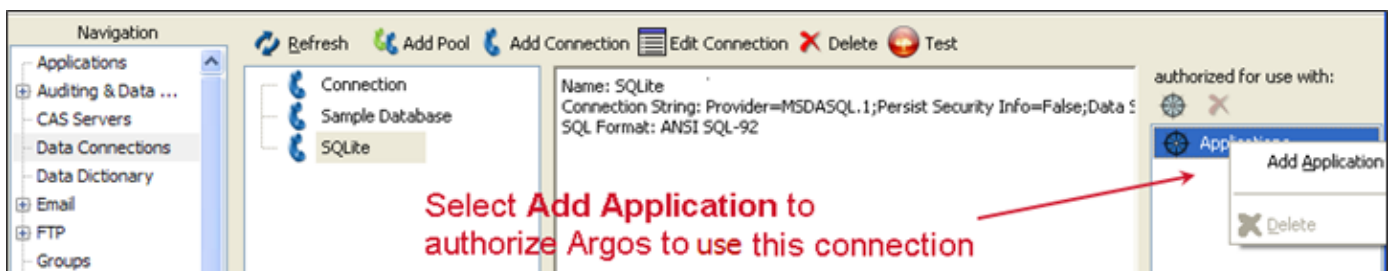


Select **ANSI SQL-92** for the SQL Format



Authorizing the Application

If you plan to use Argos to access any of the databases, remember to authorize Argos to use the newly created connection(s).

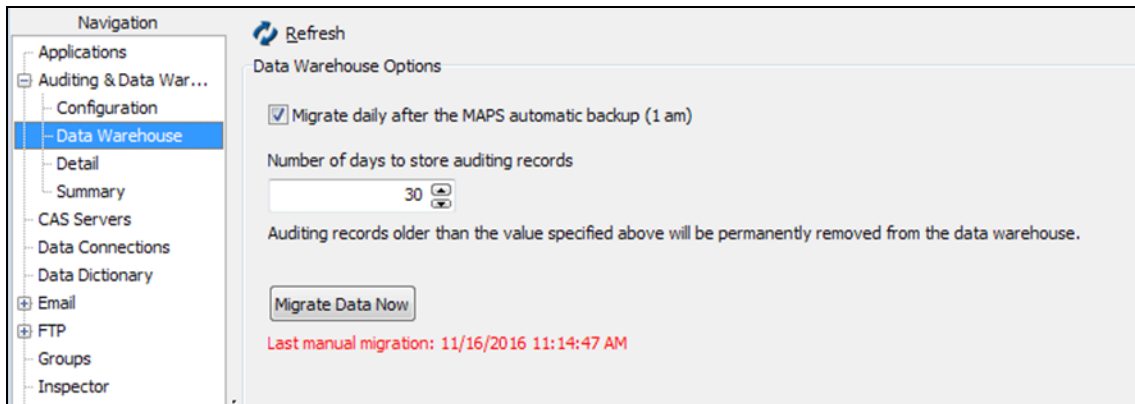


You should now be able to connect to the database.

Using the Data Warehouse

The MAPS data warehouse pulls information from both the MAPS and Argos databases and combines them into a single database that is updated nightly for your reporting needs. The advantages of having a non-production database to report against include avoiding performance hits on your production database, faster querying, and avoiding the risk of accidentally corrupting your production data.

To enable the data warehouse, launch the MAPS Configuration tool in version 4.3 or higher and go to Auditing -> Data Warehouse.



To have MAPS copy information to the data warehouse on a daily basis, check the box next to Migrate daily after MAPS automatic backup. You may also elect to perform a one-time manual migration using the Migrate Data Now button.

Auditing Records

If needed, you may adjust the number of days to retain auditing records in the data warehouse. This selection only affects the data in the auditing tables, and can be lowered to reduce the amount of disk space used by the data warehouse or to speed up queries that use the auditing tables.

While the data in the data warehouse is not real-time, in most cases you can use it to analyze and report against the information in your databases without any of the issues relating to accessing production databases while users are on the system.

To create a connection to the data warehouse, follow the same steps as outlined in [Connecting to the Databases](#). You will be creating a connection to the MAPSDataWarehouse.sqlite database located by default in the `C:\Program Files\Evisions\MAPS\Service` folder.

For a sample Argos DataBlock that uses the Data Warehouse, you can download one of the [sample Data Warehouse dashboards](#) from the CO-OP Share. This DataBlock gives administrators information about their MAPS and Argos environment, providing data on their users, DataBlocks, and reports in the system.

Joining the MAPS and Argos Databases

The information provided above describes how to connect to an individual database. If your reporting needs require data from both the MAPS and Argos databases, you have two options:

1. Use the [Data Warehouse](#), which contains information from both the MAPS and Argos databases. Note that this is an external database that is updated once a day with the current information from MAPS. Where possible, we suggest using this solution, which is specifically designed for reporting and avoids accessing the production databases.
2. Link the MAPS database to the Argos database, as outlined in this section.

Linking Data Using a Microsoft JET Database

Note: This approach requires that MAPS be installed in the default directory of C:\Program Files\Evisions\MAPS [or C:\Program Files (x86)\Evisions\MAPS on 64-bit machines]. If you installed MAPS in different directory, please create a HelpDesk case so we may assist you.

You can link the tables fairly easily using a Microsoft JET database. We have provided a [JET database that links the MapsData.sqlite and ArgosData.sqlite databases](#) which results in both databases appearing as one joined database to Argos.

Database Changes in MAPS 4.x

After the 4.0 upgrade the mapsvcd.data and ArgosData.data databases were changed to SQLite databases:

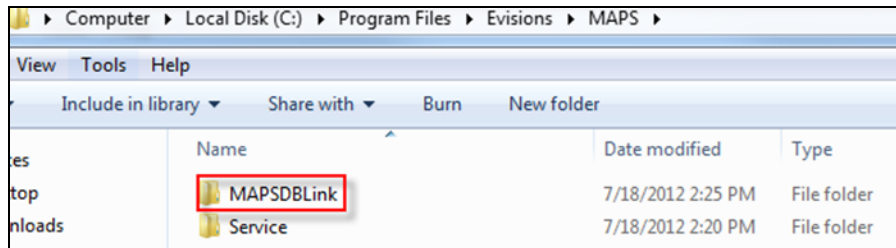
- MapsData.sqlite
- ArgosData.sqlite

Due to this change, any previously created database link will need to be modified to work with later versions of Argos and MAPS.

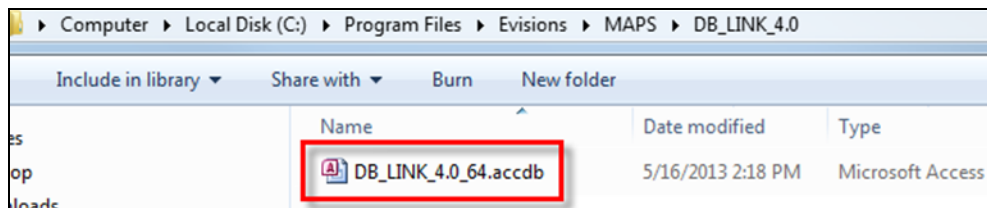
Create Linked Database File

To set up the JET database, you will need to copy the DB_LINK .accdb file you downloaded to the appropriate directory and then modify your data connection to pull from this file.

1. Log in or remote desktop to the server where MAPS is installed. *Do not create or modify database connections from a different computer.*
2. Create a new folder in the \Evisions\MAPS directory. In this example, the folder is named MAPSDBLink.



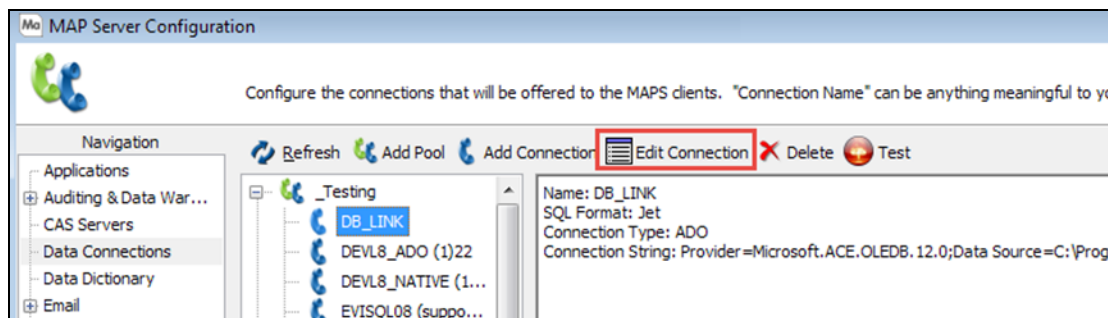
3. Unzip the DB_LINK_4.0.zip file and copy the appropriate DB_LINK_4.0_32.accdb (32-bit) or DB_LINK_4.0_64.accdb (64-bit) file to the new folder you created.



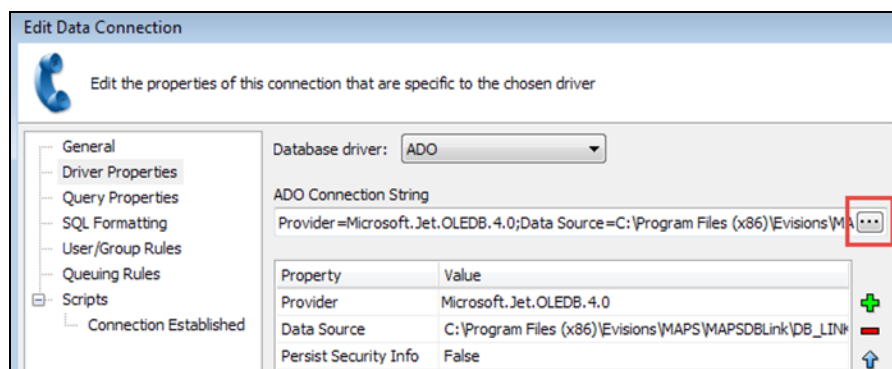
Create a Data Connection to the Database

You must now create a data connection to the DB_LINK_4.0.accdb file.

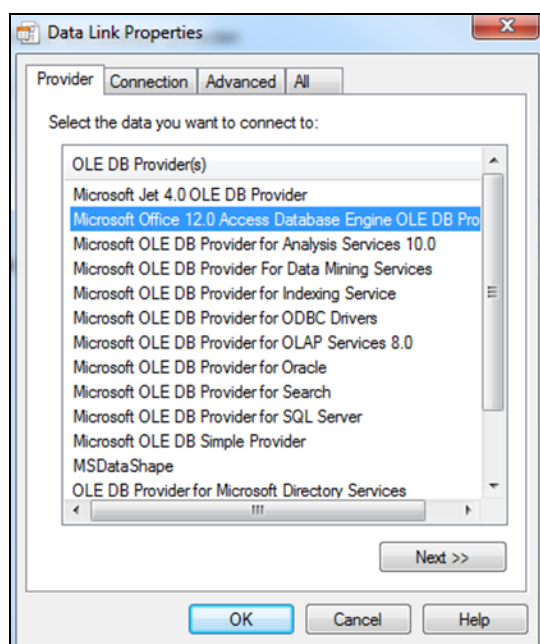
1. If a connection for the DB Link already exists you must modify the data connection to pull from the DB_LINK_4.0.accdb file. Be sure to use the DB_LINK_4.0_64.accdb file if MAPS is installed on a 64-bit server. In the MAPS Configuration, edit the data connection that is pointing to the MAPS database. If it does not exist, you will need to create a new one.



2. Go to the Driver Properties screen and select ADO as the database driver. Then click on the ellipsis at the end of the ADO Connection String field:



3. Click on the Provider tab and select the Microsoft Office 12.0 Access Database Engine OLE DB Provider then click Next.



Installing the Microsoft Access Provider

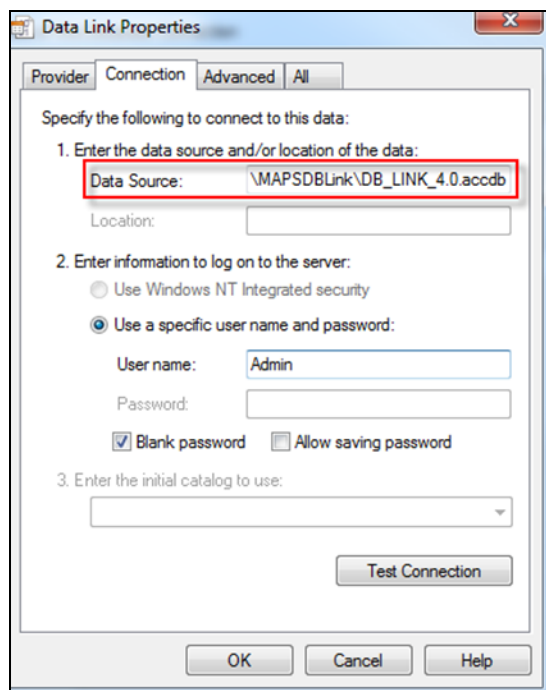
If you do not see the Access provider listed, you may need to install it on your server. You can download the [32-bit version of the Microsoft Access Database Engine 2010 Redistributable](#) from Microsoft's website.

You will need to reboot the server after installation before MAPS will recognize the provider.

Note: You must use the 32 bit version in order for MAPS to recognize the Access database provider.

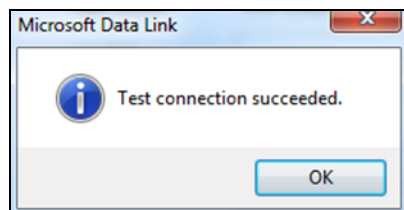
4. On the Connection tab, enter the full path of the DB_LINK_4.4.accdb in the Data Source field. Your path should look similar to:

`C:\Program Files\Evisions\MAPS\MAPSDBLink\DB_LINK_4.4_32.accdb`

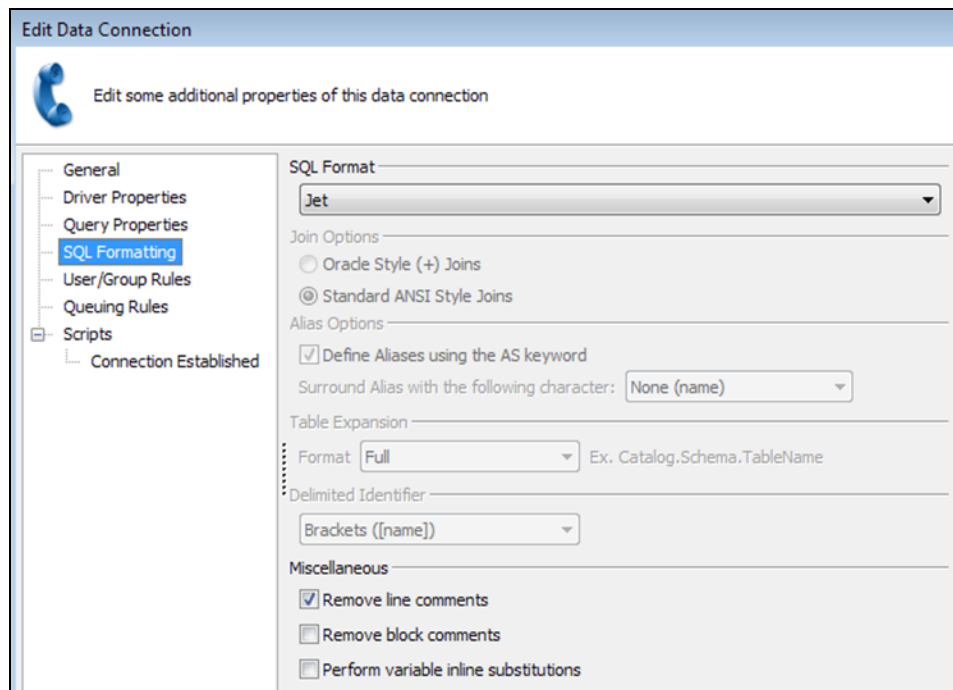


Make sure to update the path to reflect the version of MAPS you are using, your installation directory, and whether your server is 32- or 64-bit.

5. Click Test Connection to verify the connection was created properly.



- Set the SQL Formatting to Jet.



- Any DataBlocks that were created using pre-4.x versions of the MAPS database are likely to require modification, since many table names changed in MAPS and Argos 4.0. You should test each of your DataBlocks before moving them to production, making sure to allow sufficient time for making any modifications.

The newly created DB_LINK connection can now be used by Argos to create reports that require joining the MAPS and Argos databases.

MAPS Database Tables

General

SysMain

Each row of the SysMain table represents a specific environment property. The table contains only two fields, Name and Value. The Name field contains the name of a property, and the Value field contains its value.

Field	DataType	Description
Name	TEXT	The name of a property of the MAPS environment.
Value	TEXT	The value associated with the property.

The table below lists all possible property names and their descriptions. Although the data type of both Name and Value is TEXT, the value stored in the field represents text, an integer, a date, or a Boolean, depending on the property. Properties that have never been altered from their default values may not appear in the table.

Name	Functional DataType	Description of Value Field
AllowSavePassword*	BOOLEAN	'1' if users are allowed to save their passwords when logging in.
AuditingArchive*	BOOLEAN	'1' if auditing records are archived before being removed from the database.
AuditingArchiveDays*	INTEGER	The number of days that auditing archive files are kept.
AuditingDays*	INTEGER	The number of days that records are stored in the Auditing table.
AuditingEnabled*	BOOLEAN	'1' if auditing is enabled.
AuditingToggleDate*	DATE	The date and time that auditing was last modified.
AuditingToggleUser*	TEXT	The user who last made a change to the auditing configuration.
CDNPath*	TEXT	URL for the Content Delivery Network that serves up the eLauncher and Argos Web Viewer.
ChangeInterval	INTEGER	The interval the password needs to be changed.
ChangeFrequency	INTEGER	The frequency of the interval, 0 - day, 1 - week, 2 - month, 3 - year.
ClientReadTimeout*	INTEGER	Amount of time (in milliseconds) the client should wait for a response from the server before displaying the "Timeout" dialog. The default is 120000 (2 minutes). The max value is 18000000 (5 hours).
CollectUsageInfo*	BOOLEAN	'1' if MAPS sends audit summary records to Evisions (configurable on the Auditing -> Configuration screen).
Color1*	TEXT	The web color value (#nnnnnn) of the Color 1 objects in the eLauncher. The default is #000000.
Color2*	TEXT	The web color value (#nnnnnn) of the Color 2 objects in the eLauncher. The default is #272727.
Color3*	TEXT	The web color value (#nnnnnn) of the Color 3 objects in the eLauncher. The default is #494949.
CustomWebColors*	BOOLEAN	'1' if the custom colors are being used. If set to '0' then the custom color values are ignored.
Database Version*	TEXT	The version of the database. Was "Version" prior to 6.0.
DataDictEnabled*	BOOLEAN	'1' if the Data Dictionary is enabled.

Name	Functional DataType	Description of Value Field
DataWarehouse AfterBackup*	BOOLEAN	'1' if the Data Warehouse should be migrated after the daily automatic backup.
DataWarehouse AuditCount*	INTEGER	The maximum number of days to store audit information in the Data Warehouse. Audit records older than this value will be removed from the Data Warehouse.
DataWarehouse LastManualRun*	DATE	Date and time the Data Warehouse was last migrated manually.
DataWarehouseLastRun*	DATE	Date and time the Data Warehouse was last migrated, either manually or automatically.
DataWarehouseUser*	TEXT	Name of the user who performed the last manual migration of the Data Warehouse.
DateFormatShort*	TEXT	The MAPS override of the system short date format.
DisableInformationPane *	BOOLEAN	'1' if the information pane in the eLauncher is shown.
DisableUser	BOOLEAN	'1' if users should be disabled after a certain number of bad connection attempts.
DisableUserCount	INTEGER	The number of bad consecutive login attempts allowed before a user is flagged and disabled.
Mailer Active*	BOOLEAN	'1' if the email queue is active and sending emails.
EnforcePassword MinLength	BOOLEAN	'1' if a minimum password length should be enforced.
FileServerName	TEXT	The system name from the Universal Launcher screen. This is the server name that users see when connecting from the eLauncher. This record only exists if the value is different from the machine name.
FontColor1*	TEXT	The web color value (#nnnnnn) of the Font Color 1 objects in the eLauncher. The default is #FFFFFF.
FontColor2*	TEXT	The web color value (#nnnnnn) of the Font Color 2 objects in the eLauncher. The default is #4D4D4D.
HttpElevate*	BOOLEAN	'1' if HTTP connections are automatically elevated to HTTPS.
HttpElevateHost*	TEXT	The URL to use when elevating an HTTP request to HTTPS. If blank MAPS bases it on the HTTP URL.
HttpPort*	INTEGER	The port used for the internal HTTP server. The default is 8080.
HttpsPort*	INTEGER	The port used for the internal HTTPS server. The default is 443.
HttpTimeout*	INTEGER	Length of time to wait before connections should time out.
InstitutionKey	TEXT	The MAPS institution key associated with this database.
InstitutionLogoUrl*	TEXT	URL of the logo used in the eLauncher, as specified on the Server -> Launch Page screen.
LicenseKey	TEXT	The MAPS license associated with this database.
LicenseRevision	INTEGER	The version number of the institution's MAPS license.
LogDays*	INTEGER	The number of days of log files to keep. Default is 30.
Logging*	TEXT	Text logging string from the Logging -> Configuration screen.

Name	Functional DataType	Description of Value Field
OnlyShowLicensedApplications*	BOOLEAN	'1' if applications are hidden from users if the institution does not license that application.
OnlyShowUserAccessibleApplications*	BOOLEAN	'1' if applications are hidden from users who do not have permissions to use that application.
PasswordChanges	BOOLEAN	'Yes' if the passwords are set to be changed sometime in the future.
PasswordMinLength	INTEGER	Minimum number of characters in a valid password.
PasswordMinStrength	INTEGER	Minimum required password strength. See help for calculation details.
ReenableUser	BOOLEAN	'1' if automatic reenabling of a disabled user is allowed.
ReenableUserHours	INTEGER	Number of hours before a user is automatically re-enabled.
RequirePasswordNumeric	BOOLEAN	'1' if a numeric character is required.
RequirePasswordSpecial	BOOLEAN	'1' if a special (non-alphanumeric) character is required.
RequirePasswordMixedCase	BOOLEAN	'1' if an uppercase character and lowercase character are both required.
SSO_AllowPreauthentication*	BOOLEAN	Tells MAPS whether or not it should allow/support SSO pre-authentication mode. This is not required. Default value is 0.
SQLite.VacuumLastDate	DATE	The last date the SQLite database was vacuumed (unused space reclaimed after deletions).
SQLite.VacuumMinimumFreePage	INTEGER	The minimum number of pages that must be available for reclamation before attempting to vacuum. Defaults to 250 MB (262144000).
SQLite.VacuumMinimumFreePagePercent	INTEGER	The minimum number of free percentage blocks in the file before attempting to vacuum. Defaults to 25 (25% unused space).
SQLite.VacuumMinimumMinute	INTEGER	The minimum number of minutes that must pass before the next vacuum attempt (eg. 1440 to mean 24 hours). Defaults to 10080 (1 week) if this value is not present in the database.
SSO_KeyField*	TEXT	When MAPS is configured to support SSO pre-authentication mode, this key (if it exists) specifies the key attribute name which must exist in the service request header file. Default value is "EPPN".
SSO_RequiredFields*	TEXT	When MAPS is configured to support SSO pre-authentication mode, this key (if it exists) specifies a comma-separated list of field names that MAPS must find when inspecting the service request header. Default is a single field name "EPPN".
SystemMessage*	TEXT	The message that is displayed to users when they log in.
TcpIpPort*	INTEGER	The port number to use for MAPS client applications. The default is 27467.
UseArgosWebViewer*	BOOLEAN	'0' if the Argos Web Viewer has been disabled.
UseHttp*	BOOLEAN	'1' if the HTTP server is enabled.
UseHttps*	BOOLEAN	'1' if the HTTPS server is enabled.
Version	TEXT	The version of the database. Changed to "Database Version" in 6.0.

* Prior to version 6.0, properties marked with an asterisk were stored in the registry instead of the MAPS database.

ActiveServer

Information pertaining to the physical server where MAPS is installed.

Field	DataType	Description
Id	INTEGER	Unique record identifier.
UniqueId	TEXT	Name of the server where MAPS is installed.
ActivityDate	DATETIME	The last date and time that this record was updated.

AppMessage

Field	DataType	Description
Id	INTEGER	Unique record identifier.
Name	TEXT	User-friendly name of this message.
Message	TEXT	Message to be delivered.
Enabled	BOOLEAN	Flag to enable/disable this message.
Category	TEXT	Text categorization of this message.
Applications	TEXT	Comma-separated list of applications this message applies to. "All" for all applications.

Notification

Field	DataType	Description
Id	INTEGER	Unique record identifier.
Name	TEXT	The name of this notification as it appears in MAPS.
NotificationType_Id	INTEGER	The type of notification record. Currently, MAPS only supports notifications of failed emails (Id = 1).
CreatedBy	TEXT	The username of the person who created the notification.
CreatedDate	DATETIME	The date and time the notification was created.
ModifiedBy	TEXT	The username of the person who last modified the notification.
ModifiedDate	DATETIME	The date and time the notification was last modified.
Notes	TEXT	The content of the "Notes" field for the notification.
Active	BOOLEAN	Flag to turn the notification on or off.
Frequency	INTEGER	How often the notification will execute, in minutes. Defaults to 60.
Applications	TEXT	Comma-separated list of applications associated with this notification.
LastSent	DATETIME	Date and time the notification last executed.
Data	TEXT	Configuration information for the notification email, including the email body and headers.

DataObject

This table is currently not in use.

Field	DataType	Description
Id	INTEGER	Unique record identifier
DataObject_Id	INTEGER	Foreign key to parent DataObject record

Field	DataType	Description
Name	TEXT	Name of the object

DataObjectAttribute

This table is currently not in use.

Field	DataType	Description
Id	INTEGER	Unique record identifier.
DataObject_Id	INTEGER	Foreign key to parent DataObject record.
Name	TEXT	Name of the attribute.
DataType	INTEGER	The data type of this attribute (0 - string, 1 - number, 2 - date, 3 - binary).
Data	BLOB	The associated data of this attribute except for binary (3) data. That data is stored externally in the file system.

Delivery

Field	DataType	Description
Id	INTEGER	Unique record identifier.
CreateDate	DATETIME	The date that the record was created.
SendDate	DATETIME	The date when the record is to be processed.
Data	TEXT	The data describing how to process the delivery (in JSON format).
Hold	BOOLEAN	True if the record is on hold.
Attempts	INTEGER	The number of times the processing has been attempted for this record.
LastError	TEXT	The error message received the last time the process was attempted.

DeliveryFile

Field	DataType	Description
Id	INTEGER	Unique record identifier.
Delivery_Id	INTEGER	Foreign key to Delivery table, referencing the ID.
FileName	TEXT	The name of the file.
MimeType	TEXT	The MIME type of the file.
Data	BLOB	Data associated with the file.

FileData

Clustered installations only. Stores files that need to be distributed to each server in the cluster and kept in sync. For example, if HTTPS is enabled in MAPS, this table stores the SSL certificates so they can be used by all servers in the cluster. It also stores SFTP server keys, downloadable data connection drivers, and the Data Warehouse.

Field	DataType	Description
Id	INTEGER	Unique record identifier.
FileName	TEXT	The name of the file.
ContentType	TEXT	The MIME type of the file.
Data	BINARY	Stores the binary file that must be distributed to each server.

Field	DataType	Description
Hash	TEXT	Hash used to verify that servers have the correct version of the file.
ActivityDate	DATE	Date and time the record was last updated.

FilePath

Field	DataType	Description
Id	INTEGER	Unique record identifier.
Path	TEXT	The path.
Flags	INTEGER	Binary encoded permissions for this path (bit1=read, bit2=write).

IpRestrictions

Field	DataType	Description
Id	INTEGER	Unique record identifier.
AddressStart	TEXT	Starting IP address to restrict.
AddressEnd	TEXT	Ending IP address to restrict.
Allow	BOOLEAN	If 'Yes' then IP address range is allowed, if 'No' then the range is not allowed.
Note	TEXT	Optional note describing the restriction.
CreatedBy	TEXT	User who created restriction.
CreatedDate	DATETIME	Time of creation.
ModifiedBy	TEXT	User who modified restriction.
ModifiedDate	DATETIME	Time of modification.

LauncherRange

IP address ranges for the Universal Launcher.

Field	DataType	Description
Id	INTEGER	Unique record identifier.
Name	TEXT	Friendly name identifying an IP address range.
AddressStart	TEXT	Starting IP address.
AddressEnd	TEXT	Ending IP address.
Host	TEXT	The host address for client redirects.
Port	TEXT	The port used for client redirects.

MapsNode

Clustered installations only. Contains one record for each MAPS node in the cluster.

Field	DataType	Description
Id	INTEGER	Unique record identifier.
SystemName	TEXT	The system name of the MAPS node.
Address	TEXT	The IP address of the MAPS node.
ActivityDate	DATETIME	The date and time that this node was last seen in the cluster. Refreshes approximately every 10 minutes.

MapsNodeInfo

Clustered installations only. Each record corresponds to a piece of information about a node.

Field	DataType	Description
MapsNode_Id	INTEGER	Foreign Key to MapsNode. Identifies the node that this information pertains to.
Name	TEXT	The type of information: <ul style="list-style-type: none">▪ BootDateTime - The date and time that the node last rebooted.▪ TotalMemory - The total amount of RAM for the node.▪ MemoryInUse - The amount of RAM in use by the node.▪ DiskSpace - The amount of free space on the node's C: drive.▪ ServiceStartDateTime - The date and time the MAPS service was last started on this node.▪ DatabaseVersion - The database version of the MAPS database.▪ ActiveConnections - The number of active connections currently established to this node.▪ Port - The port that the MAPS service is using for this node.
Value	TEXT	The value of the information.
DataType	INTEGER	The data type of the information. 0 - string, 1 - integer, 2 - float, 3 - date, 4 - binary.

SecurityToken

Field	DataType	Description
Id	INTEGER	Unique record identifier.
Token	TEXT	Token value.
Data	TEXT	The data associated with the token.
ActivityDate	DATETIME	Date and time the record was last updated.

Data Connections

Connection

Field	DataType	Description
Id	INTEGER	Unique record identifier.
Guid	TEXT	System globally unique identifier.
Name	TEXT	Name of the connection/group.
Type	INTEGER	0 - Group, 1 - Connection (additional data in ConnectionEx).
Connection_Id	INTEGER	Link to parent Connection record.
Description	TEXT	A description of what this connection/group is for.

ConnectionEX

Field	DataType	Description
Id	INTEGER	Unique record identifier and foreign key to Connection record.
ConnectionType	TEXT	The DBMS type for this connection ("ADO", "Oracle", "MSSQL", etc.)

Field	DataType	Description
SqlFormat	TEXT	Expected data format for all SQL operations.
Script	TEXT	The SQL script to execute when this connection is opened.
Note	TEXT	Optional note describing this connection.
CreatedBy	TEXT	User who created the connection.
CreatedDate	DATETIME	Date and time of creation.
ModifiedBy	TEXT	User who last modified the connection.
ModifiedDate	DATETIME	Date and time of modification.

Connection_MapsNode

Clustered installations only. Associates a data connection with a specific MAPS server node.

Field	DataType	Description
Connection_Id	INTEGER	Foreign key to ConnectionEx record.
MapsNode_Id	TEXT	Foreign key to MapsNode record.

ConnectionPropertyName

The names of the properties stored in ConnectionPropertyValue

Field	DataType	Description
ID	INTEGER	Unique record identifier.
Name	TEXT	Name of the property (Ex: ConnectString, LockType, CursorType, CursorLocation, VariableSubstitutions, etc.).

ConnectionPropertyValue

Contains various properties associated with each data connection

Field	DataType	Description
Connection_Id	INTEGER	Foreign key to Connection record.
Name_Id	INTEGER	Foreign key to ConnectionPropertyName record.
Value	TEXT	Value of the property.

ConnectionQueue

Field	DataType	Description
Id	INTEGER	Unique record identifier.
Connection_Id	INTEGER	Foreign key to ConnectionEx record.
DayOfWeek	TEXT	The day of week this queue rule applies to. If empty then it is the "other" record.
StartTime	TIME	Starting time.
EndTime	TIME	Ending time.
MaximumQueries	INTEGER	The maximum number of queries to execute in this time range: -1 (auto), 0 (none), 1 - 1024.

ConnectionRestEndpoint

Field	DataType	Description
Id	INTEGER	Unique record identifier.
Connection_Id	INTEGER	Foreign key to ConnectionEx record.
SchemaName	TEXT	The name of the schema.
URI	TEXT	The URI relative to the base URI in ConnectionEx.
Data	TEXT	The schema definition.
ActivityDate	DATETIME	The last time this record was updated.
XPath	TEXT	The object path to define tables in the schema definition.

ConnectionRule

Field	DataType	Description
Id	INTEGER	Unique record identifier.
Connection_Id	INTEGER	Foreign key to ConnectionEx record.
Rule	INTEGER	Method of connection used: 0 – Do not connect 1 – Use username/password in connection script 2 – Use the MAPS username/password 3 – Use the username/password in this record
UserName	TEXT	Data connection username (if RULE is 3).
Password	TEXT	Data connection password (if RULE is 3).
Script	TEXT	The SQL script to execute when this rule is used during log on.
Flags	INTEGER	Binary encoded flags that control what is allowed with the connection.

ConnectionRulePropertyName

Field	DataType	Description
Id	INTEGER	Unique record identifier.
Name	TEXT	Name of the property.

ConnectionRulePropertyValue

Field	DataType	Description
ConnectionRule_Id	INTEGER	Foreign key to ConnectionRule record.
Name_Id	INTEGER	Foreign key to ConnectionRulePropertyName record.
Value	TEXT	Value of the property.

ConnectionRule_User

Field	DataType	Description
ConnectionRule_Id	INTEGER	Foreign key to ConnectionRule record.
User_Id	INTEGER	Foreign key to User record.

[ConnectionRule_Group](#)

Field	DataType	Description
Group_Id	INTEGER	Foreign key to Group record.
ConnectionRule_Id	INTEGER	Foreign key to ConnectionRule record.

[Xqp](#)

Field	DataType	Description
Id	INTEGER	Unique record identifier.
Name	TEXT	Name of the XQP.
Guid	TEXT	The globally unique ID for this XQP.
Description	TEXT	Description of the XQP.
ModuleName	TEXT	Filename of the XQP with full or relative path.

[XqpData](#)

Field	DataType	Description
Xqp_Id	INTEGER	Foreign key to Xqp record.
Data	BYTEA	BLOB data for the Xqp files.
Hash	TEXT	Hash value of "data".

[WebDataConnectorData](#)

Clustered installations only. Stores the data returned by a Cloud Connector to ensure that any changes are propagated to each server node.

Field	DataType	Description
Id	INTEGER	Unique record identifier
Connection_Id	INTEGER	Foreign key to Connection record.
Data	BINARY	The data returned by the Cloud Connector.
Hash	TEXT	Hash value of the data.

Applications

Tables pertaining to the client applications that have been installed.

[Application](#)

The applications that are installed.

Field	DataType	Description
Id	INTEGER	Unique record identifier.
Name	TEXT	Name of the product that this application is a client for (Argos, FormFusion, IntelCheck, or [MAPS] Configuration).
Guid	TEXT	The globally unique id for this application license.

Field	DataType	Description
License	TEXT	License key for this application.
AppData	TEXT	Data used by the client application.
DetailData	TEXT	Various supporting detail data.

[ApplicationEdition](#)

Application edition information for future 64-bit support.

Field	DataType	Description
Id	INTEGER	Unique record identifier.
Application_Id	INTEGER	Foreign key to Application record.
Name	TEXT	The descriptive name of the application client.
Guid	TEXT	The globally unique id for this application. On 32-bit MAPS installations, this is the same as Application.Guid.

[ApplicationEditionVersion](#)

The specific application executables that are installed on the server.

Field	DataType	Description
Id	INTEGER	Unique record identifier.
ApplicationEdition_Id	INTEGER	Foreign key to ApplicationEdition record.
Version	TEXT	Version number of the executable.
Active	BOOLEAN	-1 if the version is enabled for use; 0 if it is disabled.
ExeName	TEXT	The name of the executable file that launches the application.
Description	TEXT	A short description configured by the admin to textually distinguish this version from others.

[ApplicationEditionVersionData](#)

Clustered installations only. Stores the binary application files so they can be distributed to each server in the cluster.

Field	DataType	Description
ApplicationEditionVersion_Id	INTEGER	Foreign key to ApplicationEditionVersion record.
Data	BINARY	Stores the binary file required to install the application on each server.
Hash	TEXT	Hash used to verify that servers have the correct version of the application.

[ApplicationUsage](#)

Usage statistics for each application.

Field	DataType	Description
Application_Id	INTEGER	Primary key; foreign key to Application record.
ActiveCount	INTEGER	The current number of active users for this application.

Field	DataType	Description
MaxActiveCount	INTEGER	The maximum number of users who have been logged in to this application at any one time.
LastOverageDate	DATETIME	The date and time that the license count was last exceeded.
OverageCount	INTEGER	For institutions licensed for "unlimited" users, this field is always 0. For institutions with limited-connection licenses, it stores the highest number of connections above the licensed number.

Application_Connection

Links applications to the data connections they're authorized to use.

Field	DataType	Description
Application_Id	INTEGER	Foreign key to Application record.
Connection_Id	INTEGER	Foreign key to Connection record.

Application_Email

Links applications to the email servers they're authorized to use.

Field	DataType	Description
Application_Id	INTEGER	Foreign key to Application record.
Email_Id	INTEGER	Foreign key to Email record.

Application_User

Links applications to users who have been individually authorized for the application.

Field	DataType	Description
Application_Id	INTEGER	Foreign key to Application record.
User_Id	INTEGER	Foreign key to User record.
UserType	INTEGER	UserType override for this application (0 -No change, 1 - Normal, 2 - Designer, 3 - Administrator).
Reserved	BOOLEAN	'Yes' if the user has a reserved/guaranteed logon.
Validation	TEXT	Encrypted string used to protect this record against manual tampering.

Application_Group

Links applications to the groups that are authorized to use them.

Field	DataType	Description
Application_Id	INTEGER	Foreign key to Application record.
Group_Id	INTEGER	Foreign key to Group record.
UserType	INTEGER	UserType override for this application (0 -No change, 1 - Normal, 2 - Designer, 3 - Administrator).
Validation	TEXT	Encrypted string used to protect this record against manual tampering.

[Application_Ftp](#)

Links applications to the FTP servers they're authorized to use.

Field	DataType	Description
Application_Id	INTEGER	Foreign key to Application record.
Ftp_Id	INTEGER	Foreign key to Ftp record.

[Application_Printer](#)

Links applications to the printers they're authorized to use.

Field	DataType	Description
Application_Id	INTEGER	Foreign key to Application record.
Printer_Id	INTEGER	Foreign key to Printer record.

[Mapplets](#)

[Mapplet](#)

Information about each installed mapplet (Argos, FormFusion, or IntellectCheck server components).

Field	DataType	Description
Id	INTEGER	Unique record identifier.
Name	TEXT	The name of the Mapplet.
Guid	TEXT	The globally unique id for this Mapplet.
Description	TEXT	Description of the Mapplet.
ModuleName	TEXT	Filename of the Mapplet with full or relative path.

[MappletData](#)

Clustered installations only. Stores the binary mapplet files so they can be distributed to each server in the cluster.

Field	DataType	Description
Mapplet_Id	INTEGER	Foreign key to Mapplet record.
Data	BINARY	Stores the binary file required to install the mapplet on each server.
Hash	TEXT	Hash used to verify that servers have the correct version of the mapplet.

[SettingsProperty](#)

Properties that can be set for various applications. Currently only contains settings for the Web Viewer, such as the home folder, recent reports, and tutorial status.

Field	DataType	Description
Id	INTEGER	Unique record identifier.
Name	TEXT	Name of the property.

Field	DataType	Description
Description	TEXT	Description of the property.
Mapplet_Id	INTEGER	Foreign key to Mapplet record.
DataType	INTEGER	The data type of this property. 0 – string, 1 – integer, 2 – float, 3 – date, 4 – Boolean, 128 – binary.
MaxLength	INTEGER	The maximum length of the property value (used for string and binary data types).

SettingsValue

Individual user values for the properties in SettingsProperty.

Field	DataType	Description
Id	INTEGER	Unique record identifier.
User_Id	INTEGER	Foreign key to ResourceUser record.
Property_Id	INTEGER	Foreign key to SettingsProperty record.
Value	TEXT	The value of the user setting.

Users, Groups, and Roles

SysUser

This table was originally named "User" but was changed to "SysUser" due to a reserved word conflict in SQLite. All foreign keys refer to this table as "User".

Field	DataType	Description
Id	INTEGER	Unique record identifier.
Guid	TEXT	System globally unique identifier.
Name	TEXT	Name of the user.
Description	TEXT	A textual description of what this account is used for or who might use the account.
CreatedBy	TEXT	User who created the record.
CreatedDate	DATETIME	Date and time the record was created.
ModifiedBy	TEXT	User who last modified the record.
ModifiedDate	DATETIME	Date and time the record was last modified.
LastLogonDate	DATETIME	Date and time the user last logged in successfully.
UserType	INTEGER	Legacy field that has been replaced by user roles (via the URType_User table). In earlier versions of MAPS that did not have user roles, the values were: 0 - Execute, 1 - Normal, 2 - Designer, 3 – Administrator. Currently set to 1 when creating a user and not used for any purpose.
System	BOOLEAN	'Yes' if this account is a system defined user.
Deactivated	BOOLEAN	'Yes' if the account has been deactivated and is therefore unusable.
Priority	INTEGER	The user's execution priority: 0 - Lowest, 1 - Lower, 2 - Normal, 3 - Higher, 4 - Highest.
CasID	TEXT	User's unique identifier in CAS.

Field	DataType	Description
Notes	TEXT	Administrative notes.
StartDate	DATE	Date this user can start using MAPS.
StopDate	DATE	Date this user can no longer use MAPS.
DeleteOnStop	BOOLEAN	'Yes' if this account should be deleted when 'STOP_DATE' is reached.

UserInfo

Stores additional data relating to users, such as the custom user fields for MAPS users.

Field	DataType	Description
User_Id	INTEGER	Foreign key to SysUser.
Name	TEXT	Name of the property.
Value	TEXT	The value of the property.
DataType	INTEGER	The data type of the property. 0 - string, 1 - integer, 2 - float, 3 - date, 4 - Boolean.

SysGroup

Note: This table was originally named "Group" but was changed to "SysGroup" due to a reserved word conflict in SQLite. All foreign keys refer to this table as "Group".

Field	DataType	Description
Id	INTEGER	Unique record identifier.
Guid	TEXT	System globally unique identifier.
Name	TEXT	Name of the group.
Description	TEXT	A textual description of what this account is used for or who might use the account.
CreatedBy	TEXT	User who created the record.
CreatedDate	DATETIME	Date and time the record was created.
ModifiedBy	TEXT	User who last modified the record.
ModifiedDate	DATETIME	Date and time the record was last modified.
System	BOOLEAN	'Yes' if this account is a system defined group.

MapsUser

Field	DataType	Description
User_Id	INTEGER	Unique record identifier and one-to-one foreign key from SysUser.
EmailAddress	TEXT	The user's email address.
Password	TEXT	The (encrypted) password used to authenticate the user.
PasswordNeverExpire	BOOLEAN	True if the user's password never expires.
PasswordMustChange	BOOLEAN	True if the user must change their password the next time they log in.
PasswordDateChanged	DATETIME	Date and time of the last password change.

MapsGroup

Field	DataType	Description
Group_Id	INTEGER	Unique record identifier and one-to-one foreign key from SysGroup.

LdapUser

Field	DataType	Description
User_Id	INTEGER	Unique record identifier and one-to-one foreign key from User.
Ldap_Id	INTEGER	Foreign key to Ldap record.
Ldap_Name	TEXT	Foreign key to Ldap record (Name field).
DistinguishedName	TEXT	Distinguished name on the LDAP server.
Logon	TEXT	The logon name.
OverrideEmailAddress	BOOLEAN	True if email address override is in effect.
EmailAddress	TEXT	The email address that overrides the email address from the LDAP server.

LdapGroup

Field	DataType	Description
Group_Id	INTEGER	Unique record identifier and one-to-one foreign key from SysGroup.
Ldap_Id	INTEGER	Foreign key in Ldap record.
Ldap_Name	TEXT	Foreign key in Ldap record.
DistinguishedName	TEXT	LDAP distinguished name.
UserType	INTEGER	Type of user (deprecated). 0-Execute, 1-Normal, 2-Designer, 3-Administrator.

User_Group

Field	DataType	Description
User_Id	INTEGER	Foreign key to User record.
Group_Id	INTEGER	Foreign key to Group record.

ResourceUser

Field	DataType	Description
Id	INTEGER	Unique record identifier.
User_Id	INTEGER	Foreign key to User record. If null then user is external.
Guid	TEXT	System globally unique identifier.
Identifier	TEXT	Unique identifier to distinguish different external user accounts.
CreateDate	DATETIME	Date and time the record was first created.
ActivityDate	DATETIME	Date and time the resources were last accessed.

UserAuth

Cached authorization data for a resource user.

Field	DataType	Description
User_Id	INTEGER	Foreign key to ResourceUser record.
Data	TEXT	Encrypted data.
ActivityDate	DATETIME	Date and time the resources were last accessed.

URType

All user role types supported by MAPS and its mapplets.

Field	DataType	Description
Id	INTEGER	Unique record identifier.
Product	TEXT	The product that uses this user role type.
Name	TEXT	The name of this user type (unique to the product).
Description	TEXT	Description of the user type.
System	BOOLEAN	Set if this is a system-defined user role type.
Administrator	BOOLEAN	Set if this user role type grants product-level administrative privileges.
CreatedDate	DATETIME	The date and time the record was created.
CreatedBy	TEXT	The user that created this record.
ModifiedDate	DATETIME	The date and time of the last time this record was modified.
ModifiedBy	TEXT	The user that last modified this record.
Notes	TEXT	Administrative notes.

UrType_UROperation

Pivot table associating URType records with UROperation records.

Field	DataType	Description
URType_Id	INTEGER	Foreign key to URType record.
UROperation_Id	INTEGER	Foreign key to UROperation record.

UROperation

All user role operations supported by MAPS and its mapplets.

Field	DataType	Description
Id	INTEGER	Unique record identifier.
Product	TEXT	The product that uses this operation.
Name	TEXT	The name of this operation (unique to the product).
Description	TEXT	Friendly name displayed to the user.

URType_User

Pivot table to associate a URType record with a User record.

Field	DataType	Description
URType_Id	INTEGER	Foreign key to URType record.
User_Id	INTEGER	Foreign key to User record.

URType_Group

Pivot table to associate a URType record with a Group record

Field	DataType	Description
URType_Id	INTEGER	Foreign key to URType record.
Group_Id	INTEGER	Foreign key to Group record.

GroupCategory

Field	DataType	Description
Id	INTEGER	Unique record identifier.
Name	TEXT	Name of the category.
Description	TEXT	A textual description of what this category is used for.

GroupCategory_Group

Field	DataType	Description
GroupCategory_Id	INTEGER	Foreign key to GroupCategory record.
Group_Id	INTEGER	Foreign key to Group record.

Ldap

Field	DataType	Description
Id	INTEGER	Unique record identifier.
Name	TEXT	The name of the dictionary.
Host	TEXT	The host address to the LDAP server.
Port	INTEGER	Port of the LDAP server.
UserName	TEXT	Logon of user used for configuration.
Password	TEXT	User's password (encrypted) used for configuration.
NameAttr	TEXT	Name of the attribute that holds a user's full name.
DescriptionAttr	TEXT	Name of the attribute that holds a user's description.
LogonAttr	TEXT	Name of the attribute that holds a user's logon name.
UIDAttr	TEXT	Name of the attribute that holds a user's id.
EmailAttr	TEXT	Name of the attribute that holds a user's email address.
GroupNameAttr	TEXT	Name of the attribute that holds a group's name.
GroupDescAttr	TEXT	Name of the attribute that holds a group's description.

Field	DataType	Description
Enabled	BOOLEAN	Flag to enable/disable use of this LDAP server. Default: 1 (enabled).
Data	TEXT	Various configuration data stored as XML.

LdapPassword

Field	DataType	Description
Id	INTEGER	Unique record identifier.
User_Id	INTEGER	Link to ResourceUser record.
Password	TEXT	Encrypted password of the LDAP user.

SsoMethod

Field	DataType	Description
Id	INTEGER	Unique record identifier.
Name	TEXT	The name of the server.
Notes	TEXT	Optional notes about the server.
Enabled	BOOLEAN	Flag to enable/disable use of this server.
Type	TEXT	Type of SSO method (CAS, SAML, OAuth, etc.)
ActivityDate	DATETIME	The last time the record was updated.

SsoToken

Field	DataType	Description
Token	TEXT	Unique SSO Identifier.
ExpirationDate	DATETIME	Date and time when the token will no longer be valid.
Data	TEXT	State information associated with the token

SsoMethodPropertyName

Field	DataType	Description
Id	INTEGER	Unique record identifier.
Name	TEXT	Name of the property.

SsoMethodPropertyValue

Field	DataType	Description
SsoMethod_Id	INTEGER	Foreign key to the SsoMethod record.
Name_Id	INTEGER	Foreign key to the SsoMethodPropertyName record.
Value	TEXT	Value of the property.

ClientSession

Each record is an active session associated with a user who is currently logged in to MAPS.

Field	DataType	Description
SessionId	TEXT	Unique record identifier for the session.

Field	DataType	Description
Type	INTEGER	The type of session. 1 - HTTP session, 2 - TCP session.
AuthData	TEXT	Authentication data for the session.
CreatedDate	DATETIME	The date and time that this session was created (after user authentication).
ActivityDate	DATETIME	The last date and time that the session user performed an operation.
ConnData	TEXT	Session data used by the inspector in clustered installations.

UserTrack

Tracks bad login attempts when the option to disable users after a certain number of incorrect attempts is enabled in MAPS. Users are removed from this table after logging in successfully.

Field	DataType	Description
Name	TEXT	The username that was typed in, whether it corresponds to an actual user or not.
Attempts	INTEGER	Number of bad login attempts.
Active	BOOLEAN	0 for recognized users whose accounts are disabled; -1 for users who were not found or who were found but are not (yet) disabled.
ActivityDate	DATETIME	The last date and time this record was updated.

Resources

Email

Field	DataType	Description
Id	INTEGER	Unique record identifier.
Guid	TEXT	System globally unique identifier.
Name	TEXT	Name of the email server.
Type	TEXT	The type of email server (SMTP is only valid right now, future expansion).
Data	TEXT	Miscellaneous data for this email server (XML format).

Email_User

Field	DataType	Description
Email_Id	INTEGER	Foreign key to Email record.
User_Id	INTEGER	Foreign key to User record.

Email_Group

Field	DataType	Description
Id	INTEGER	Unique record identifier.
Guid	TEXT	System globally unique identifier.
Name	TEXT	Name of the email server.
Type	TEXT	The type of email server (SMTP is only valid right now, future expansion).
Data	TEXT	Miscellaneous data for this email server (XML format).

EmailQueue

Field	DataType	Description
Id	INTEGER	Unique record identifier.
Email_Id	INTEGER	Foreign key to Email record.
Message	TEXT	The message content of the email, in XML format.
SendDate	DATETIME	Date and time to send the email.
Recipients	TEXT	Primary recipients.
Sender	TEXT	Originator of message.
UserName	TEXT	User that is responsible for firing off this email.
Application	TEXT	Application that submitted the email to the queue.
Subject	TEXT	Subject of email.
Hold	BOOLEAN	Yes if the email is on hold.
Attempts	INTEGER	Number of times a send has been attempted for this email.
LastError	TEXT	The error message received the last time a send was attempted.

EmailQueue_ActiveServer

Associates an EmailQueue record to an ActiveServer record. A record is added to this table when an email in the queue is being processed.

Field	DataType	Description
EmailQueue_Id	INTEGER	Unique record identifier and foreign key to EmailQueue table.
ActiveServer_Id	INTEGER	Foreign key to ActiveServer table, referencing the ID of the particular MAPS server where this email will be sent from.

EmailQueueAttachment

Attachments pertaining to the emails currently in the queue.

Field	DataType	Description
Id	INTEGER	Unique record identifier.
EmailQueue_Id	INTEGER	Foreign key to EmailQueue table.
FileName	TEXT	The filename of the email attachment.
Data	BLOB	The data of the email attachment.

Printer

Field	DataType	Description
Id	INTEGER	Unique record identifier.
Name	TEXT	Name of the printer.
SystemName	TEXT	The name the printer is referenced as on the server.
Description	TEXT	A description of this printer.
PrinterData	TEXT	Initialization data for the printer driver.
DeliveryApp	BOOLEAN	Indicates whether or not the printer is to be used with the DeliveryApp. Default is False.

Printer_User

Field	DataType	Description
Printer_Id	INTEGER	Foreign key to Printer record.
User_Id	INTEGER	Foreign key to User record.

Printer_Group

Field	DataType	Description
Printer_Id	INTEGER	Foreign key to Printer record.
Group_Id	INTEGER	Foreign key to Group record.

Ftp

Field	DataType	Description
Id	INTEGER	Unique record identifier.
Name	TEXT	Name of the FTP server.
Type	TEXT	sftp (using default authentication).
Data	TEXT	Configuration data for the FTP server (XML format).

Ftp_User

Field	DataType	Description
Ftp_Id	INTEGER	Foreign key to Ftp record.
User_Id	INTEGER	Foreign key to User record.

Ftp_Group

Field	DataType	Description
Ftp_Id	INTEGER	Foreign key to Ftp record.
Group_Id	INTEGER	Foreign key to Group record.

Key

Field	DataType	Description
Id	INTEGER	Unique record identifier for a key added on the FTP -> Keys page.
Key	TEXT	Filename of the key.
Passphrase	TEXT	Passphrase associated with the key.

Data Dictionary

DataDictionary

Field	DataType	Description
Id	INTEGER	Unique record identifier.
Name	TEXT	The name of the dictionary.

Field	DataType	Description
Description	TEXT	Description of the dictionary.

[DataDictionaryAlias](#)

Field	DataType	Description
Id	INTEGER	Unique record identifier.
Dictionary_Id	INTEGER	Foreign key to DataDictionary record.
ObjectName	TEXT	The name of the object for which to provide dictionary data.
Alias	TEXT	The alias to be used when creating a query that references this object.
Description	TEXT	Description of the object.
Flags	INTEGER	Various flags for this record.

[DataDictionary_Connection](#)

Field	DataType	Description
Dictionary_Id	INTEGER	Foreign key to DataDictionary record.
Connection_Id	INTEGER	Foreign key to Connection record.

[DataDictionaryJoin](#)

Field	DataType	Description
Id	INTEGER	Unique record identifier.
Dictionary_Id	INTEGER	Foreign key to DataDictionary record.
LeftTable	TEXT	First table in the join.
LeftColumn	TEXT	First column in the join.
RightTable	TEXT	Second table in the join.
RightColumn	TEXT	Second column in the join.
Type	INTEGER	The join type (0 - inner, 1 - outer left, 2 - outer right).
Flags	INTEGER	Various flags for this record.

[DataDictionaryJoin2](#)

Field	DataType	Description
Id	INTEGER	Unique record identifier.
Dictionary_Id	INTEGER	Foreign key to DataDictionary record.
LeftTable	TEXT	First table in the join.
RightTable	TEXT	Second table in the join.
Text	TEXT	The text of this join.
Flags	INTEGER	Various flags for this record.

[DataDictionarySecurity](#)

Field	DataType	Description
Id	INTEGER	Unique record identifier.

Field	DataType	Description
Dictionary_Id	INTEGER	Foreign key to DataDictionary record.
User_Id	INTEGER	Foreign key to ResourceUser record.
Permissions	INTEGER	Binary field containing various security permissions.

DataDictionarySecurity_Group

Field	DataType	Description
DataDictionarySecurity_Id	INTEGER	One-to-one foreign key to DataDictionarySecurity record.
Group_Id	INTEGER	Link to Group record.

DataDictionarySecurity_User

Field	DataType	Description
DataDictionarySecurity_Id	INTEGER	One-to-one foreign key to DataDictionarySecurity record.
User_Id	INTEGER	Link to ResourceUser record.

MAPS Auditing Database Tables

To improve database performance, MAPS version 4.3 separated the auditing tables from the rest of the MAPS database. These tables contain the information that appears on the Detail and Summary screens of the Auditing section in the MAPS Config. You can report against these tables to see who performed what actions in your system.

Navigation

Applications

Auditing & Data Warehouse

Configuration

Data Warehouse

Detail

Summary

Data Connections

Data Dictionary

Email

FTP

Groups

Inspector

LDAP

License

Logging

Mapplets

Printers

Server

Single Sign-On

Users

Run Query

Refresh

Retrieve More Records

Retrieve All Records

Number of Records to Retrieve: 1000

Id	ActivityDate	Application	User	Action	Text
185729	4/12/2016 4:34:00 PM	IntelleCheck	evisions	Logon	
185728	4/12/2016 2:29:16 PM	MAPSWeb	Jess	Logon	
185727	4/12/2016 2:28:47 PM	Configuration	evisions	User.Groups.Modify	Jess: Added groups: Everyone
185726	4/12/2016 2:28:47 PM	Configuration	evisions	User.Create	Jess
185725	4/12/2016 2:27:53 PM	Configuration	evisions	Logon	
185724	4/12/2016 11:35:16 AM	Argos	reportviewer	Logon	
185723	4/12/2016 11:34:37 AM	Argos	reportviewer	Logon	
185722	4/12/2016 11:34:27 AM	Argos	evisions	Logon	
185721	4/12/2016 11:33:25 AM	Configuration	evisions	Logon	
185720	4/12/2016 11:33:08 AM	MAPSWeb	evisions	Logon	
185719	4/12/2016 11:30:51 AM	Argos	evisions	Logon	
185718	4/12/2016 11:08:35 AM	Argos	evisions	DataBlock.Edit	TPowell.Chart Testinga.AR-3032
185717	4/12/2016 11:08:22 AM	Argos	evisions	Logon	
185716	4/12/2016 11:01:25 AM	Configuration	evisions	Logon	
185715	4/12/2016 11:00:24 AM	MAPSWeb	evisions	Logon	
185714	4/12/2016 11:00:17 AM	Argos	evisions	DataBlock.Edit	Alwyn.My Folder.Name distribution
185713	4/12/2016 11:00:03 AM	Argos	evisions	Logon	

Number of Filtered Records: 1000

Number of Records Retrieved: 1000

Total Number of Audit Records: 4232

Debug

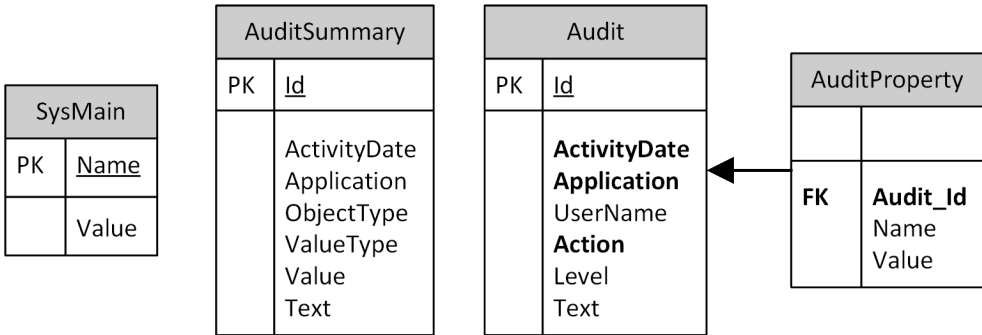
Check for Updates

Help

Support

Log Out

For more information about auditing configuration, refer to the [MAPS Help](#).



General

Audit

Field	DataType	Description
Id	INTEGER	Unique record identifier.
ActivityDate	DATETIME	Date and time the action took place.
Application	TEXT	The application that initiated the action.
UserName	TEXT	The user that initiated the action.
Action	TEXT	Short description of the action.
Text	TEXT	Long description of the action.

AuditProperty

Field	DataType	Description
Name	TEXT	The name of the property.
Audit_Id	INTEGER	Foreign key to the Audit record.
Value	TEXT	The value associated with the property.

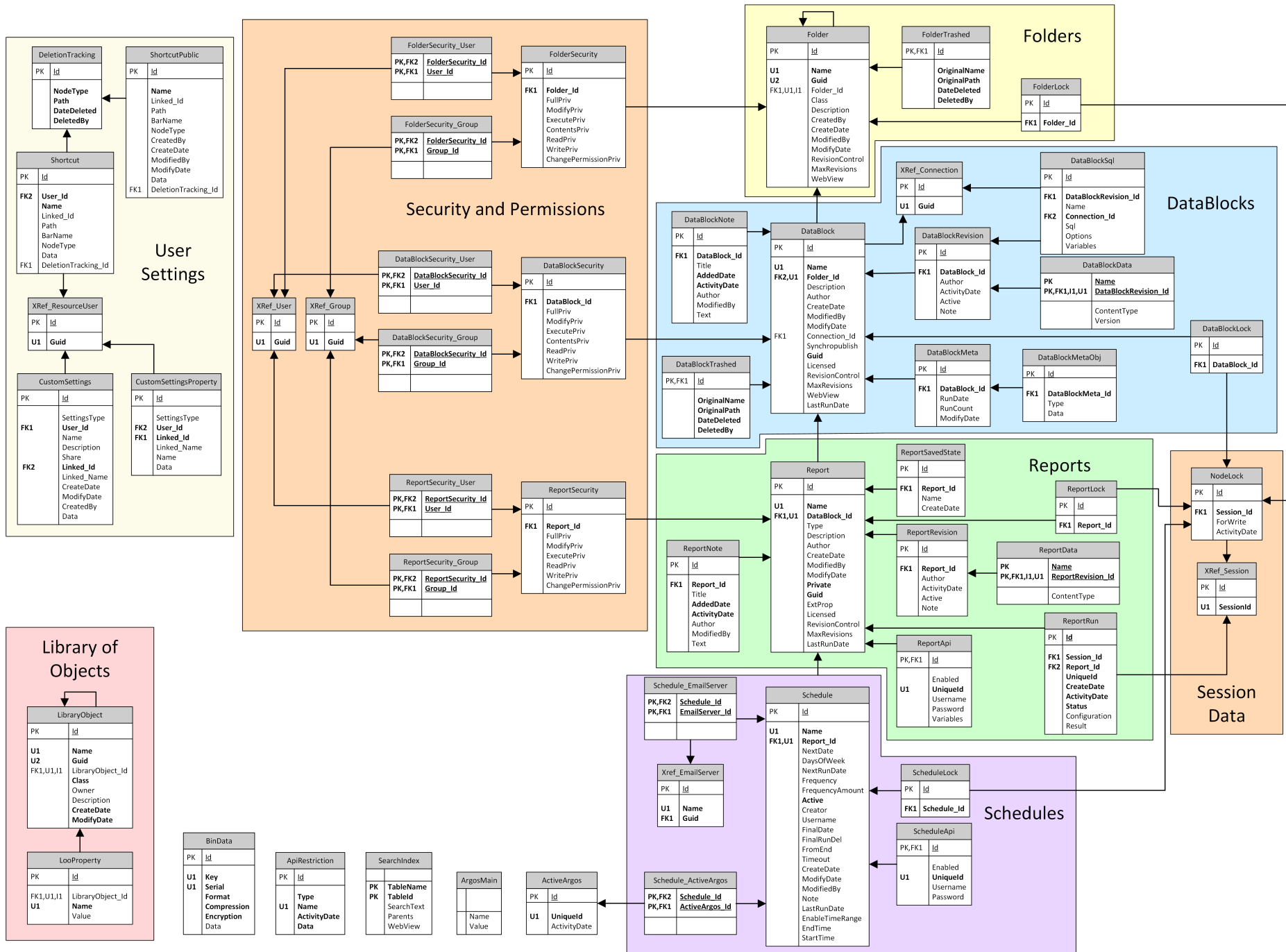
AuditSummary

Field	DataType	Description
Id	INTEGER	Unique record identifier.
ActivityDate	DATETIME	Date and time the action took place.
Application	TEXT	The application that initiated the action.
ObjectType	TEXT	The type (report, DB, etc.) of info.
ValueType	TEXT	The type (sum, average, time) of value.
Value	INTEGER	The numeric value of this object type.
Text	TEXT	Long description of the action (if necessary).

SysMain

Field	DataType	Description
Name	TEXT	The name of a property of the Data Warehouse. Currently only contains the database version.
Value	TEXT	The value associated with the property.

Argos Database Tables



General

ArgosMain

Holds property names and values of global system settings such as the database and mapplet versions.

Field	DataType	Description
Name	TEXT	The name of the system property.
Value	TEXT	The value of the system property.

The table below lists some possible property names and their descriptions. Although the data type of both Name and Value is TEXT, the value stored in the field represents text, an integer, a date, or a Boolean, depending on the property. Properties that have never been altered from their default values may not appear in the table.

Property	Functional DataType	Description of Value Field
ApiQueue_MaxSize	INTEGER	Queue size for API requests.
ApiRequest_WaitTime	INTEGER	Wait time in milliseconds for an API request to be processed before timing out. 0 denotes an infinite wait time.
Database Version	TEXT	The database version number expected by Argos.
Mapplet Version	TEXT	The version number of the Argos mapplet.
MaximumSchedulerThreads	INTEGER	The maximum number of threads to be used by the scheduler.
Scheduler Active	BOOLEAN	1 if the scheduler is active, 0 if it is not.
Scheduler Timeout	INTEGER	Number of milliseconds the scheduler should wait before timing out.
Scheduling User	TEXT	The user who is used to run schedules if a default has been specified on the Mapplets -> Argos -> Scheduling -> Configuration screen.
Scheduling User Override	TEXT	Yes/No if the default user is always used to run schedules.
ValidateReferrers	BOOLEAN	1 if security restriction checking is enabled on the Mapplets -> Argos -> API Security screen, 0 if it is not.

ActiveArgos

Each record in this table corresponds to an actively running Argos Mapplet.

Field	DataType	Description
Id	INTEGER	Unique record identifier.
UniqueId	TEXT	Unique system identifier.
ActivityDate	DATETIME	The date and time this record was last updated.

SearchIndex

Supports fast searching for Explorer objects (Folder, DataBlock, etc) in the database for records by name, description, etc.

Field	DataType	Description
TableName	TEXT	The name of the table that "owns" this record.
TableId	INTEGER	The id of the record in 'Table'.

Field	DataType	Description
SearchText	TEXT	Contains the primary search text Name, Description, etc.
Parents	TEXT	Contains a delimited list of parent ids.
WebView	BOOLEAN	A flag indicating whether the record is visible on the web.

ApiRestriction

Contains data relating to the API Restriction.

Field	DataType	Description
Id	INTEGER	Unique record identifier.
Type	TEXT	The type of data found in this record (e.g. Referrer, Token).
Name	TEXT	The unique name associated with this record.
ActivityDate	TIMESTAMP	The date this record was last used.
Data	TEXT	Additional configuration data for this record.

BinData

Used by many other tables to store binary data.

Field	DataType	Description
Id	INTEGER	Unique record identifier.
Key	TEXT	Key provided by the table to uniquely identify a blob such as "Foo.1" where "Foo" is the table name and "1" is the unique id of the "Foo" record. If more than one blob data record is needed per table then the name can be subdivided such as "Foo.Image.1" and "Foo.Data.1".
Serial	INTEGER	Used to reorder blob fragments.
Format	INTEGER	Description of what "Data" contains (default: raw) "raw" (0) - Compressed and encrypted binary data "file" (1) - UTF8 encoded filename of binary data relative to "{root}\External Data\BinData\". By default the filename is "{Id}.data".
Compression	INTEGER	Compression algorithm used: none (0), zlib (1) (default: none).
Encryption	INTEGER	Encryption algorithm used: none (0), aes128 (1) (default: none).
Data	BLOB	Data of this record appropriately formatted.

Draft

Contains all drafts in the system.

Field	DataType	Description
Id	INTEGER	Unique record identifier.
User_Id	INTEGER	Link to the XRef_ResourceUser record.
ActivityDate	DATETIME	The last date and time that the record was modified.
Note	TEXT	Status note for the draft. Active if null or inactive if set.

Session Data

NodeLock

All hard node locks. Each NodeLock record corresponds to a FolderLock, ReportLock, DataBlockLock, or ScheduleLock record.

Field	DataType	Description
Id	INTEGER	Unique record identifier. Id is the same as the related FolderLock, ReportLock, DataBlockLock, or ScheduleLock Id.
Session_Id	INTEGER	Foreign key to XRef_Session record.
ForWrite	BOOLEAN	True if the lock is a write lock; false if it is a read lock.
ActivityDate	DATETIME	Date and time the record was last edited (or creation date, if never edited).

XRef_Session

Provides referential integrity for Argos data (node locks) to an active MAPS client session.

Field	DataType	Description
Id	INTEGER	Unique record identifier.
SessionId	TEXT	Unique session identifier.

Library of Objects

LibraryObject

Records for objects in the "Library of Objects".

Field	DataType	Description
Id	INTEGER	Unique record identifier.
Name	TEXT	The name of the object.
Guid	TEXT	Globally unique identifier for this object.
LibraryObject_Id	INTEGER	Record identifier of the parent object (logical foreign key).
Class	TEXT	The class of the object.
Owner	TEXT	The user that created and owns this object.
Description	TEXT	Optional description of this object.
CreateDate	DATETIME	Date and time the object was created.
ModifyDate	DATETIME	Date and time the object was last modified.

[LooProperty](#)

Ancillary properties associated with a LibraryObject record.

Field	DataType	Description
Id	INTEGER	Unique record identifier.
LibraryObject_Id	INTEGER	Foreign key to LibraryObject record.
Name	TEXT	Name of the property.
Value	TEXT	The value of the property.

[User Settings](#)

[Shortcut](#)

All private shortcuts in the system.

Field	DataType	Description
Id	INTEGER	Unique record identifier.
User_Id	INTEGER	Foreign key to ResourceUser record.
Name	TEXT	Name of the Shortcut.
Linked_Id	INTEGER	Record id of the linked DataBlock or Report.
Path	TEXT	Full path to the linked DataBlock or Report (deprecated).
BarName	TEXT	Name of the bar this Shortcut belongs to.
NodeType	TEXT	The type of node this Shortcut references.
Data	TEXT	Various data used by the record.
DeletionTracking_Id	INTEGER	If the link is broken this record explains why.

[DeletionTracking](#)

Support for tracking when a shortcut link has been invalidated due to the deletion of its linked DataBlock or report.

Field	DataType	Description
Id	INTEGER	Unique record identifier.
NodeType	TEXT	The type of node that was deleted e.g. "Folder", "DataBlock", "Report".
Path	TEXT	Full path of the deleted object.
DateDeleted	DATETIME	The date and time the object was deleted.
DeletedBy	TEXT	The user responsible for the deletion.

ShortcutPublic

All public shortcuts in the system.

Field	DataType	Description
Id	INTEGER	Unique record identifier.
Name	TEXT	Name of the Shortcut.
Linked_Id	INTEGER	Record id of the linked DataBlock or Report.
Path	TEXT	Full path to the linked DataBlock or Report (deprecated).
BarName	TEXT	Name of the bar this Shortcut belongs to.
NodeType	TEXT	The type of node this Shortcut references.
CreatedBy	TEXT	User that created the Shortcut.
CreateDate	DATETIME	Date and time the Shortcut was created.
ModifiedBy	TEXT	User that last modified the Shortcut.
ModifyDate	DATETIME	Date and time the Shortcut was last modified.
Data	TEXT	Various data used by the record.
DeletionTracking_Id	INTEGER	If the link is broken this record explains why.

XRef_ResourceUser

Provides referential integrity for Argos data and has an external foreign key to link to a resource user record in the MAPS database

Field	DataType	Description
Id	INTEGER	Unique record identifier.
Guid	TEXT	Globally unique identifier and foreign key to MAPS database.

CustomSettings

Stores user-defined saved settings for dashboards and OLAP cubes. This information was stored in the Library of Objects prior to version 4.6.

Field	DataType	Description
Id	INTEGER	Unique record identifier.
SettingsType	TEXT	"Dashboard" or "OLAP".
User_Id	INTEGER	User ID from XRef_ResourceUser record – user who created the saved setting.
Name	TEXT	The name of this saved setting.
Description	TEXT	An optional description for this saved setting.
Share	BOOLEAN	Whether or not this saved setting is shared with other users. If false, only the setting's creator can see and use it.
Linked_Id	INTEGER	ID of the DataBlock associated with this saved setting. FK to DataBlock record.
Linked_Name	TEXT	Name of the internal object ("<none">).
CreateDate	DATETIME	Date and time this saved setting was created.
ModifyDate	DATETIME	Date and time this saved setting was last modified.
CreatedBy	TEXT	Name of the user who created the saved setting.

Field	DataType	Description
Data	TEXT	JSON formatted data that defines the specified settings and their values.

CustomSetingsProperty

Properties associated with the user-specific lists of saved dashboard settings and saved OLAP settings for each dashboard.

Field	DataType	Description
Id	INTEGER	Unique record identifier.
SettingsType	TEXT	The type of saved setting list. "Dashboard" or "OLAP".
User_Id	INTEGER	User ID from XRef_ResourceUser record – the user whose list this is.
Linked_Id	INTEGER	ID of the DataBlock associated with this saved setting list. FK to DataBlock record.
Linked_Name	TEXT	Name of the internal object.
Name	TEXT	The name of this list type. "ViewOrder" for custom-ordered lists, or "Default".
Data	TEXT	For custom-ordered lists, specifies the order the saved settings should be listed.

Security and Permissions

FolderSecurity

Contains all security settings that are applied to folders.

Field	DataType	Description
Id	INTEGER	Unique record identifier.
Folder_Id	INTEGER	Link to Folder record.
FullPriv	TEXT	Full privileges: null - No change, A - Allow, D – Deny.
ModifyPriv	TEXT	Modify privileges: null - No change, A - Allow, D – Deny.
ExecutePriv	TEXT	Execute privileges: null - No change, A - Allow, D – Deny.
ContentsPriv	TEXT	Contents privileges: null - No change, A - Allow, D – Deny.
ReadPriv	TEXT	Read privileges: null - No change, A - Allow, D – Deny.
WritePriv	TEXT	Write privileges: null - No change, A - Allow, D – Deny.
ChangePermissionPriv	TEXT	Change permissions privilege: null - No change, A - Allow, D – Deny.

FolderSecurity_User

Associates a FolderSecurity record with a User record.

Field	DataType	Description
FolderSecurity_Id	INTEGER	Link to FolderSecurity record.
User_Id	INTEGER	Link to XRef_User record.

[FolderSecurity_Group](#)

Associates a FolderSecurity record with a Group record.

Field	DataType	Description
FolderSecurity_Id	INTEGER	Link to FolderSecurity record.
Group_Id	INTEGER	Link to XRef_Group record.

[DataBlockSecurity](#)

All security settings applied to DataBlocks.

Field	DataType	Description
Id	INTEGER	Unique record identifier.
DataBlock_Id	INTEGER	Link to DataBlock record.
FullPriv	TEXT	Full privileges: null - No change, A - Allow, D - Deny.
ModifyPriv	TEXT	Modify privileges: null - No change, A - Allow, D - Deny.
ExecutePriv	TEXT	Execute privileges: null - No change, A - Allow, D - Deny.
ContentsPriv	TEXT	Contents privileges: null - No change, A - Allow, D - Deny.
ReadPriv	TEXT	Read privileges: null - No change, A - Allow, D - Deny.
WritePriv	TEXT	Write privileges: null - No change, A - Allow, D - Deny.
ChangePermissionPriv	TEXT	Change permissions privilege: null - No change, A - Allow, D - Deny.

[DataBlockSecurity_User](#)

Associates a DataBlockSecurity record to a User record.

Field	DataType	Description
DataBlockSecurity_Id	INTEGER	Link to DataBlockSecurity record.
User_Id	INTEGER	Link to XRef_User record.

[DataBlockSecurity_Group](#)

Associates a DataBlockSecurity record to a Group record.

Field	DataType	Description
DataBlockSecurity_Id	INTEGER	Link to DataBlockSecurity record.
Group_Id	INTEGER	Link to XRef_Group record.

[ReportSecurity](#)

All security settings applied to reports.

Field	DataType	Description
Id	INTEGER	Unique record identifier.
Report_Id	INTEGER	Link to Report record.
FullPriv	TEXT	Full privileges: null - No change, A - Allow, D - Deny.

Field	DataType	Description
ModifyPriv	TEXT	Modify privileges: null - No change, A - Allow, D - Deny.
ExecutePriv	TEXT	Execute privileges: null - No change, A - Allow, D - Deny.
ReadPriv	TEXT	Read privileges: null - No change, A - Allow, D - Deny.
WritePriv	TEXT	Write privileges: null - No change, A - Allow, D - Deny.
ChangePermissionPriv	TEXT	Change permissions privilege: null - No change, A - Allow, D - Deny.

[ReportSecurity_User](#)

Associates a ReportSecurity record with a User record.

Field	DataType	Description
ReportSecurity_Id	INTEGER	Link to ReportSecurity record.
User_Id	INTEGER	Link to XRef_User record.

[ReportSecurity_Group](#)

Associates a ReportSecurity record with a Group record.

Field	DataType	Description
ReportSecurity_Id	INTEGER	Link to ReportSecurity record.
Group_Id	INTEGER	Link to XRef_Group record.

[XRef_Group](#)

Provides referential integrity for Argos data and has an external foreign key to link to a group record in the MAPS database.

Field	DataType	Description
Id	INTEGER	Unique record identifier.
Guid	TEXT	Globally unique identifier and foreign key to MAPS database.

[XRef_User](#)

Provides referential integrity for Argos data and has an external foreign key to link to a user record in the MAPS database.

Field	DataType	Description
Id	INTEGER	Unique record identifier.
Guid	TEXT	Globally unique identifier and foreign key to MAPS database.

Folders

Folder

Contains all folders in the system.

Field	DataType	Description
Id	INTEGER	Unique record identifier.
Name	TEXT	Name of the Folder.
Guid	TEXT	The globally unique id for this Folder.
Folder_Id	INTEGER	Record id of the parent folder.
Class	TEXT	Class name of this folder (e.g. "Trash").
Description	TEXT	Description of the folder.
CreatedBy	TEXT	User that created the Folder.
CreateDate	DATETIME	Date and time the Folder was created.
ModifiedBy	TEXT	User that last modified the Folder.
ModifyDate	DATETIME	Date and time the Folder was last modified.
RevisionControl	INTEGER	Indicates if the children of this Folder are under.
MaxRevisions	INTEGER	Maximum number of revisions to keep.
WebView	INTEGER	Indicates if the children of this Folder are viewable from Argos Web Viewer (0 = No, 1 = Yes, 2 = Use Parent).

FolderLock

Associates a Folder record with a NodeLock record.

Field	DataType	Description
Id	INTEGER	Unique record identifier corresponding to a record in NodeLock.
Folder_Id	INTEGER	Foreign key to Folder record.

FolderTrashed

Contains top-level folders that are in the trash bin.

Field	DataType	Description
Id	INTEGER	Unique record identifier and link to Folder record.
OriginalName	TEXT	The original name of the referenced Folder.
OriginalPath	TEXT	The original path of the referenced Folder.
DateDeleted	DATETIME	The date and time the referenced folder was deleted.
DeletedBy	TEXT	The name of the user who deleted this folder.

DataBlocks

DataBlock

All DataBlocks in the system.

Field	DataType	Description
Id	INTEGER	Unique record identifier.
Name	TEXT	Name of the DataBlock.
Folder_Id	INTEGER	Record id of the parent folder.
Description	TEXT	Description of the DataBlock.
Author	TEXT	Author of the DataBlock.
CreateDate	DATETIME	Date and time the DataBlock was created.
ModifiedBy	TEXT	User that last modified the DataBlock.
ModifyDate	DATETIME	Date and time the DataBlock was last modified.
Connection_Id	INTEGER	Link to XRef_Connection record.
Synchropublish	BOOLEAN	'Yes' if changes to this object should be autosynchronized with the Publish server.
Guid	TEXT	The globally unique id for this DataBlock.
Licensed	BOOLEAN	'Yes' if this object contains licensed data.
RevisionControl	INTEGER	Indicates if this DataBlock is under revision control (0 = No, 1 = Yes, 2 = Use Parent).
MaxRevisions	INTEGER	Maximum number of revisions to keep.
WebView	INTEGER	Indicates if this DataBlock is viewable from Argos Web Viewer (0 = No, 1 = Yes, 2 = Use Parent).
LastRunDate	DATETIME	Date and time the DataBlock was last executed.

DataBlockNote

Any notes that are associated with the DataBlock.

Field	DataType	Description
Id	INTEGER	Unique record identifier.
DataBlock_Id	INTEGER	Link to DataBlock record.
Title	TEXT	The title of this note.
AddedDate	DATETIME	The date and time this note was added.
ActivityDate	DATETIME	Last date and time this note was modified.
Author	TEXT	The user that added this note.
ModifiedBy	TEXT	The user that last modified this note.
Text	TEXT	The text of the note.

[DataBlockRevision](#)

Tracks revisions of a DataBlock. Functions as a version-control system for Argos objects.

Field	DataType	Description
Id	INTEGER	Unique record identifier.
DataBlock_Id	INTEGER	Link to DataBlock record.
Author	TEXT	Author of the revision.
ActivityDate	DATETIME	Date and time this revision was edited/created.
Active	BOOLEAN	True if the record is the active revision.
Note	TEXT	Notes for this revision.

[DataBlockData](#)

All DataBlock data elements.

Field	DataType	Description
Name	TEXT	Name of the element.
DataBlockRevision_Id	INTEGER	Link to DataBlockRevision record.
ContentType	TEXT	MIME type of the associated data.
Version	TEXT	The data definition version.

[DataBlockSql](#)

SQL statements for objects in a DataBlock. Used only by the Web Viewer. Rows are added to this table the first time a DataBlock is run in the Web Viewer.

Field	DataType	Description
Id	INTEGER	Unique record identifier.
DataBlockRevision_Id	INTEGER	Link to DataBlockRevision record.
Name	TEXT	Name of the object unique to the DataBlock.
Connection_Id	INTEGER	Link to XRef_Connection record.
Sql	TEXT	The SQL text of the DataBlock object.
Options	TEXT	JSON formatted text that contains options for controlling the SQL execution.
Variables	TEXT	Comma delimited list of required variables.

[DataBlockMeta](#)

Daily tracking of metadata about a DataBlock.

Field	DataType	Description
Id	INTEGER	Unique record identifier.
DataBlock_Id	INTEGER	Record id of the DataBlock.
Rundate	DATE	The day when this DataBlock was last run.
Runcount	INTEGER	How many times the DataBlock has been executed for the day.
ModifyDate	DATE	When the DataBlock was last modified.

[DataBlockMetaObj](#)

Metadata information for each item associated with a DataBlock.

Field	DataType	Description
Id	INTEGER	Unique record identifier.
DataBlockMeta_Id	INTEGER	Link to DataBlockMeta record.
Type	TEXT	The type of metadata found in this record.
Data	TEXT	The metadata.

[DataBlockLock](#)

Associates a DataBlock record with a NodeLock record.

Field	DataType	Description
Id	INTEGER	Unique record identifier corresponding to a record in NodeLock.
DataBlock_ID	INTEGER	Foreign key to DataBlock record.

[DataBlockTrashed](#)

Contains DataBlocks that are in the trash bin.

Field	DataType	Description
Id	INTEGER	Unique record identifier and link to DataBlock record.
OriginalName	TEXT	The original name of the referenced DataBlock.
OriginalPath	TEXT	The original path of the referenced DataBlock.
DateDeleted	DATETIME	The date and time the referenced DataBlock was deleted.
DeletedBy	TEXT	Name of the user who deleted this DataBlock.

[XRef_Connection](#)

Provides referential integrity for Argos data and has an external foreign key to link to a connection record in the MAPS database.

Field	DataType	Description
Id	INTEGER	Primary Key.
Guid	TEXT	Globally unique identifier and foreign key to MAPS database.

[Draft_DataBlock](#)

Associates a Draft record to a DataBlock record.

Field	DataType	Description
Draft_Id	INTEGER	Link to Draft.
DataBlock_Id	INTEGER	Link to DataBlock
DataBlockRevision_Id	INTEGER	Link to DataBlockRevision

Reports

Report

Contains all reports in Argos.

Field	DataType	Description
Id	INTEGER	Unique record identifier.
Name	TEXT	Name of the report.
DataBlock_Id	INTEGER	Record id of the parent DataBlock.
Type	TEXT	The type of report such as "CSV" or "Banded".
Description	TEXT	Description of the what report is used for.
Author	TEXT	Author of the report.
CreateDate	DATETIME	Date and time the report was created.
ModifiedBy	TEXT	User that last modified the report.
ModifyDate	DATETIME	Date and time the report was last modified.
Private	BOOLEAN	True if this report is private to the author.
Guid	TEXT	The globally unique id for this report.
ExtProp	TEXT	Extended properties (XML format).
Licensed	BOOLEAN	'Yes' if this object contains licensed data.
RevisionControl	INTEGER	Indicates if this report is under revision control. (0 = No, 1 = Yes, 2 = Use Parent).
MaxRevisions	INTEGER	Maximum number of revisions to keep.
LastRunDate	DATETIME	Date and time the report was last run.

ReportNote

Any notes that are associated with the report.

Field	DataType	Description
Id	INTEGER	Unique record identifier.
Report_Id	INTEGER	Link to Report record.
Title	TEXT	The title of this note.
AddedDate	DATETIME	The date and time this note was added.
ActivityDate	DATETIME	Last date and time this note was modified.
Author	TEXT	The user who added this note.
ModifiedBy	TEXT	The user who last modified this note.
Text	TEXT	The text of the note.

[ReportRevision](#)

Tracks revisions of reports. Functions as a version-control system for Argos objects.

Field	DataType	Description
Id	INTEGER	Unique record identifier.
Report_Id	INTEGER	Foreign key to Report record.
Author	TEXT	Author of the revision.
ActivityDate	DATETIME	Date and time this revision was edited/created.
Active	BOOLEAN	True if the record is the active revision.
Note	TEXT	Notes for this revision.

[ReportData](#)

Field	DataType	Description
Name	TEXT	Name of the element.
ReportRevision_Id	INTEGER	Link to ReportRevision record.
ContentType	TEXT	MIME type of the associated data.

[ReportLock](#)

Field	DataType	Description
Id	INTEGER	Unique record identifier corresponding to a record in NodeLock.
Report_Id	INTEGER	Foreign key to Report record.

[ReportSavedState](#)

Contains saved run states of reports.

Field	DataType	Description
Id	INTEGER	Unique record identifier.
Report_Id	INTEGER	Foreign key to Report record.
Name	TEXT	Name of this saved state.
CreateDate	DATETIME	The date and time this record was created.

[ReportApi](#)

API settings of a report.

Field	DataType	Description
Id	INTEGER	Unique record identifier and link to Report record.
Enabled	BOOLEAN	Yes if this record is enabled.
UniqueId	TEXT	Unique textual identifier used to reference this record.
Username	TEXT	User that is used to run the referenced report.
Password	TEXT	Encrypted password for the user.
Variables	TEXT	List of pre-configured variable values.

ReportRun

All reports currently being run in the system.

Field	DataType	Description
Id	INTEGER	Unique record identifier.
Session_Id	INTEGER	Foreign key to XRef_Session record.
Report_Id	INTEGER	Foreign key to Report record.
UniqueId	TEXT	Unique Id provided to clients at access the queued records.
CreateDate	DATETIME	The date this record was created.
ActivityDate	DATETIME	The date this record was last modified.
Status	TEXT	Current status of running reports.
Configuration	TEXT	JSON formatted string with configuration data to run a report.
Result	TEXT	JSON formatted string with configuration data to run a report.

Draft_Report

Associates the Draft record to a Report record.

Field	DataType	Description
Draft_Id	INTEGER	Link to Draft.
Report_Id	INTEGER	Link to Report.
ReportRevision_Id	INTEGER	Link to ReportRevision.

Schedules

Schedule

Contains all scheduled reports.

Field	DataType	Description
Id	INTEGER	Unique record identifier.
Name	TEXT	Name of the schedule.
Report_Id	INTEGER	Record id of the parent report.
NextDate	DATETIME	The next scheduled date and time for execution.

Field	DataType	Description														
DaysOfWeek	INTEGER	<p>The days of the week on which the schedule should run, if specified. Binary encoded. 0 = default.</p> <p>To calculate the value, a number is assigned to each day as follows:</p> <ul style="list-style-type: none">Monday - 1Tuesday - 2Wednesday - 4Thursday - 8Friday - 16Saturday - 32Sunday – 64 <p>The value in DaysOfWeek is the sum of the values for each day the schedule will run. For example, a schedule that runs Monday, Wednesday, and Friday will be assigned the value 1 + 4 + 16 = 21.</p> <p>When represented in binary, a MWF schedule (21) will be 0010101. Notice that, from right to left, each digit corresponds to a day of week:</p> <table><tr><td>0</td><td>0</td><td>1</td><td>0</td><td>1</td><td>0</td><td>1</td></tr><tr><td>Su</td><td>S</td><td>F</td><td>Th</td><td>W</td><td>Tu</td><td>M</td></tr></table> <p>You can therefore use a bitwise AND operator to query for schedules that run on the desired day(s). To find all schedules that run on Monday, Wednesday, and Friday, you would enter:</p> <pre>select * from schedule where (schedule.DaysOfWeek & 1) > 0 and (schedule.DaysOfWeek & 4) > 0 and (schedule.DaysOfWeek & 8) > 0</pre>	0	0	1	0	1	0	1	Su	S	F	Th	W	Tu	M
0	0	1	0	1	0	1										
Su	S	F	Th	W	Tu	M										
NextRunDate	DATETIME	The next date and time the schedule will actually run.														
Frequency	INTEGER	<p>Frequency code for when to repeat the execution, where x is the value in FrequencyAmount.</p> <ul style="list-style-type: none">0 - Only once1 - Every x minutes2 - Every x hours3 - Every day4 - Every x days5 - Every week6 - Every x weeks7 - Twice per month8 - Every month9 - Every x months10 - Twice per year11 - Every year12 - Every x years														

Field	DataType	Description
FrequencyAmount	INTEGER	Depends on the value of FREQUENCY. Represents the number of minutes, hours, days, weeks, or years in which to repeat execution.
Active	BOOLEAN	Controls whether the scheduled report is presently active.
Creator	TEXT	The user that was responsible for this node's creation.
Username	TEXT	The user that all operations should be executed using.
FinalDate	DATETIME	The final date and time the schedule should execute.
FinalRunDel	BOOLEAN	Controls whether the schedule is deleted after its final run.
FromEnd	BOOLEAN	Controls whether date increments should be calculated from the end of the frequency. (28 Feb + 1 month = 31 Mar)
Timeout	INTEGER	Number of milliseconds this schedule can run before considered timed out.
CreateDate	DATETIME	The date and time the schedule was created.
ModifyDate	DATETIME	The date and time the schedule was modified.
ModifiedBy	TEXT	The user that modified the schedule.
Note	TEXT	A simple note so the user can describe schedule purpose.
LastRunDate	DATETIME	Date and time the schedule was last executed.
EnableTimeRange	BOOLEAN	When EnableTimeRange is true, StartTime and EndTime will be enforced for this schedule, preventing execution outside of the specified range. When false, these values are ignored.
StartTime	DATETIME	The earliest time that a schedule is allowed to execute, if EnableTimeRange is true.
EndTime	DATETIME	The latest time that the schedule is allowed to execute, if iEnableTimeRange is true.

[ScheduleLock](#)

Associates a Schedule record with a NodeLock record.

Field	DataType	Description
Id	INTEGER	Unique record identifier corresponding to a record in NodeLock.
Schedule_Id	INTEGER	Foreign key to Schedule record.

[ScheduleApi](#)

API settings for schedules.

Field	DataType	Description
Id	INTEGER	Unique record identifier and link to Schedule record.
Enabled	BOOLEAN	Yes if this record is enabled.
UniqueId	TEXT	Unique textual identifier used to reference this record.
Username	TEXT	User that is used to run the referenced report.
Password	TEXT	Encrypted password for the user.

[Schedule_ActiveArgos](#)

Associates a Schedule record with an ActiveArgos record indicating which Argos mapplet is executing the schedule. A record is added to this table when a schedule is active.

Field	DataType	Description
Schedule_Id	INTEGER	Foreign key to Schedule record.
ActiveArgos_Id	INTEGER	Foreign key to ActiveArgos record.

[Schedule_EmailServer](#)

Associates a Schedule record with an EmailServer record.

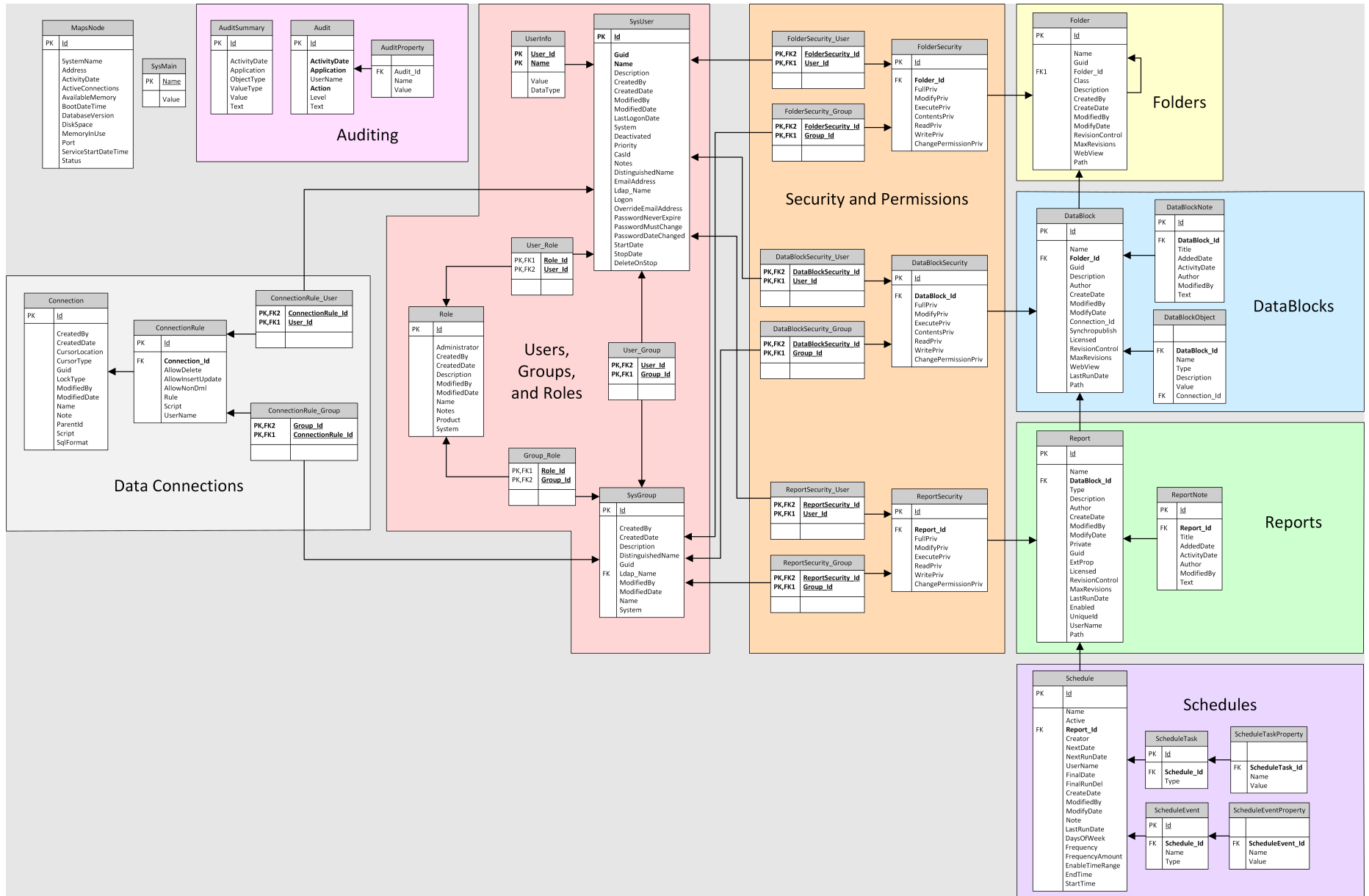
Field	DataType	Description
Schedule_Id	INTEGER	Foreign key to Schedule record.
EmailServer_Id	INTEGER	Foreign key to Xref_EmailServer record.

[Xref_EmailServer](#)

Provides referential integrity for Argos data and has an external foreign key link to an email server record in the MAPS database.

Field	DataType	Description
Id	INTEGER	Unique record identifier.
Name	TEXT	Unique name.
Guid	TEXT	Globally unique identifier and foreign key to MAPS database.

Data Warehouse Tables



General

SysMain

Contains database version information and other attributes pertaining to the system.

Field	DataType	Description
Name	TEXT	The name of a system attribute. Ex: 'MAPS Database Version'.
Value	TEXT	The value of the attribute. Ex: '4.3'.

MapsNode

Contains system information about the MAPS server. Standalone installations will contain a single record. Clustered installations will have one record for each node in the cluster.

Field	DataType	Description
Id	INTEGER	Unique record identifier.
SystemName	TEXT	The system name of the MAPS node.
Address	TEXT	The IP address of the MAPS node.
ActivityDate	DATETIME	The date and time that this node was last seen in the cluster. Refreshes approximately every 10 minutes.
ActiveConnections	INTEGER	The number of active connections currently established to this node.
AvailableMemory	TEXT	The total amount of RAM available on the node.
BootDateTime	TEXT	The date and time that the node last rebooted.
DatabaseVersion	TEXT	The database version of the MAPS database.
DiskSpace	TEXT	The amount of free space on the node's C: drive.
MemoryInUse	TEXT	The amount of RAM in use by the node.
Port	INTEGER	The port that the MAPS service is using for this node.
ServiceStart DateTime	DATETIME	The date and time the MAPS service was last started on this node.
Status	TEXT	Whether the node is Active or Inactive.

Data Connections

Connection

Refer to the [MAPS Help](#) for detailed information on the various data connection options.

Field	DataType	Description
Id	INTEGER	Unique record identifier.
CreatedBy	TEXT	The user who created the connection.
CreatedDate	DATETIME	Date and time the connection was created.
CursorLocation	INTEGER	The cursor location for this data connection. Default, use client, or use server.

Field	DataType	Description
CursorType	INTEGER	The cursor type for this data connection. Default, open dynamic, open forward only, open keyset, open static, or open unspecified.
Guid	TEXT	System globally unique identifier.
LockType	INTEGER	The lock type for this data connection. Default, lock batch optimistic, lock optimistic, lock pessimistic, lock read only, or lock unspecified.
ModifiedBy	TEXT	The user who last modified the connection.
ModifiedDate	DATETIME	Date and time the connection was last modified.
Name	TEXT	Name of the connection or connection group.
Note	TEXT	The note associated with the data connection.
ParentId	INTEGER	The ID of the connection group that this connection or group is a member of, or 1 if it is a top-level connection or group.
Script	TEXT	Custom script run when this connection is established.
SqlFormat	TEXT	The SQL format (database type) used with this connection. Example: Oracle, MS SQL Server, etc.

ConnectionRule

Settings from the User/Group Rules screen of the data connection.

Field	DataType	Description
Id	INTEGER	Unique record identifier.
Connection_Id	INTEGER	FK from Connection – the data connection this rule pertains to.
AllowDelete	BOOLEAN	If true, allows the user or group to delete records via this connection.
AllowInsertUpdate	BOOLEAN	If true, allows the user or group to insert and update records via this connection.
AllowNonDml	BOOLEAN	If true, allows the user or group to run non-DML scripts against this connection.
Rule	INTEGER	Connection method (0 - not allowed to connect, 1 - use connection username and password, 2 - use MAPS username and password, or 3 - use the following username and password).
UserName	TEXT	Username to use for the connection, if Rule is 3 (use the following username/password).
Script	TEXT	SQL script to execute after logging in with this connection.

ConnectionRule_User

Field	DataType	Description
ConnectionRule_Id	INTEGER	FK from ConnectionRule.
User_Id	INTEGER	FK from SysUser.

ConnectionRule_Group

Field	DataType	Description
Group_Id	INTEGER	FK from SysGroup.
ConnectionRule_Id	INTEGER	FK from ConnectionRule.

Users, Groups, and Roles

SysUser

Note: This table was originally named "User" but was changed to "SysUser" due to a reserved word conflict in SQLite. All foreign keys refer to this table as "User".

Field	DataType	Description
Id	INTEGER	Unique record identifier.
Guid	TEXT	System globally unique identifier.
Name	TEXT	Name of the user.
Description	TEXT	A textual description of what this account is used for or who might use the account.
CreatedBy	TEXT	User who created this user.
CreatedDate	DATETIME	Date/time this user was created.
ModifiedBy	TEXT	User who last modified this user.
ModifiedDate	DATETIME	Date/time this user was last modified.
LastLogonDate	DATETIME	Date/time the user last logged in successfully.
System	BOOLEAN	'Yes' if this account is a system-defined user (e.g., the Administrator user).
Deactivated	BOOLEAN	'Yes' if the account has been deactivated and is therefore unusable.
Priority	INTEGER	The user's execution priority: 0 - Lowest, 1 - Lower, 2 - Normal, 3 - Higher, 4 - Highest.
CasID	TEXT	User's unique identifier in CAS.
Notes	TEXT	Administrative notes pertaining to this user.
DistinguishedName	TEXT	If this is an LDAP user, the user's DN from the LDAP server.
EmailAddress	TEXT	The user's email address. If this is an LDAP user, this email address overrides the email address that comes from the LDAP server.
Ldap_Name	TEXT	The name of the LDAP server that this user comes from, if they are an LDAP user.
Logon	TEXT	If this is an LDAP user, the user's LDAP username.
OverrideEmail Address	BOOLEAN	If this is an LDAP user, 1 means the entered email address will be used by MAPS instead of their LDAP email address.
PasswordNeverExpire	BOOLEAN	For MAPS users, if this is true their password will never expire.
PasswordMustChange	BOOLEAN	For MAPS users, if this is true then the user will be prompted to change their password the next time they log in.
PasswordDateChanged	DATETIME	The date a MAPS user's password was last changed. This field is null for LDAP users and defaults to December 30 th , 1899 for MAPS users whose password has never been changed.
StartDate	DATE	Date this user can start using MAPS.
StopDate	DATE	Date this user can no longer use MAPS.
DeleteOnStop	BOOLEAN	'Yes' if this account should be deleted when 'STOP_DATE' is reached.

Userinfo

Stores additional data relating to users, such as the custom user fields for MAPS users.

Field	DataType	Description
User_Id	INTEGER	Foreign key to SysUser.
Name	TEXT	Name of the property.
Value	TEXT	The value of the property.
DataType	INTEGER	The data type of the property. 0 - string, 1 - integer, 2 - float, 3 - date, 4 - Boolean.

SysGroup

Note: This table was originally "Group" but was renamed due to a reserved word conflict in SQLite. Foreign keys refer to this table as "Group".

Field	DataType	Description
Id	INTEGER	Unique record identifier.
Guid	TEXT	System globally unique identifier.
Name	TEXT	The name of the group.
Description	TEXT	A textual description of what this group is used for.
CreatedBy	TEXT	The user who created the group.
CreatedDate	DATETIME	The date/time the record was created.
ModifiedBy	TEXT	The user who last modified the group.
ModifiedDate	DATETIME	The date/time the group was last modified.
System	BOOLEAN	True if this is a system-defined group, e.g. the "Everyone" group.
DistinguishedName	TEXT	If this is an LDAP group, the group's DN from the LDAP server.
Ldap_Name	TEXT	The name of the LDAP server, if this is an LDAP group.

User_Group

Field	DataType	Description
User_Id	INTEGER	FK from SysUser.
Group_Id	INTEGER	FK from Group.

User_Role

Field	DataType	Description
Role_Id	INTEGER	FK from Role.
User_Id	INTEGER	FK from SysUser.

Group_Role

Field	DataType	Description
Role_Id	INTEGER	FK from Role.
Group_Id	INTEGER	FK from SysGroup.

Role

Contains all user roles in MAPS, both system-defined and custom.

Field	DataType	Description
Id	INTEGER	Unique record identifier.
Administrator	BOOLEAN	True if this is in administrator user type (Argos or MAPS administrator).
CreatedBy	TEXT	The user who created this role, or the name of the application this role was created for (in the case of system-defined user roles).
CreatedDate	DATETIME	The date/time this role was created.
Description	TEXT	A description of the purpose of this role.
ModifiedBy	TEXT	The user who last modified this role.
ModifiedDate	DATETIME	The date/time this role was last modified.
Name	TEXT	The name of the user role.
Notes	TEXT	Not in use.
Product	TEXT	The product this role was created for.
System	BOOLEAN	True if this is a system-defined user role.

Security and Permissions

FolderSecurity

Field	DataType	Description
Id	INTEGER	Unique record identifier.
Folder_Id	INTEGER	FK from Folder – the ID for the folder these security settings pertain to.
FullPriv	TEXT	A or D to allow or deny this user/group full access to this folder.
ModifyPriv	TEXT	A or D to allow or deny this user/group the ability to modify this folder and the objects in the folder.
ExecutePriv	TEXT	A or D to allow or deny this user/group the ability to execute objects in this folder.
ContentsPriv	TEXT	Obsolete; replaced by ReadPriv.
ReadPriv	TEXT	A or D to allow or deny this user/group the ability to see this folder and its contents.
WriterPriv	TEXT	A or D to allow or deny this user/group the ability to create objects in this folder.
ChangePermissionPriv	TEXT	A or D to allow or deny this user/group the ability to modify these permissions.

FolderSecurity_User

Field	DataType	Description
FolderSecurity_Id	INTEGER	Foreign key from FolderSecurity.
User_Id	INTEGER	The ID of the user whom this set of security settings pertains to (from SysUser).

FolderSecurity_Group

Field	DataType	Description
FolderSecurity_Id	INTEGER	Foreign key from FolderSecurity.
Group_Id	INTEGER	The ID of the group that this set of security settings pertains to (from SysGroup).

DataBlockSecurity

Field	DataType	Description
Id	INTEGER	Unique record identifier.
DataBlock_Id	INTEGER	FK link to DataBlock record.
FullPriv	TEXT	A or D to allow or deny this user/group full access to this DataBlock.
ModifyPriv	TEXT	A or D to allow or deny this user/group the ability to modify this DataBlock.
ExecutePriv	TEXT	A or D to allow or deny this user/group the ability to execute this DataBlock.
ContentsPriv	TEXT	Obsolete; replaced by ReadPriv.
ReadPriv	TEXT	A or D to allow or deny this user/group the ability to see this DataBlock and its reports.
WritePriv	TEXT	A or D to allow or deny this user/group the ability to create reports for this DataBlock.
ChangePermissionPriv	TEXT	A or D to allow or deny this user/group the ability to modify these permissions.

DataBlockSecurity_User

Field	DataType	Description
DataBlockSecurity_Id	INTEGER	FK from DataBlockSecurity.
User_Id	INTEGER	The ID of the user whom this set of security settings pertains to (from SysUser).

DataBlockSecurity_Group

Field	DataType	Description
DataBlockSecurity_Id	INTEGER	FK from DataBlockSecurity.
Group_Id	INTEGER	The ID of the group that this set of security settings pertains to (from SysGroup).

ReportSecurity

A null value for any security setting defaults to the settings of the report's parent DataBlock.

Field	DataType	Description
Id	INTEGER	Unique record identifier.
Report_Id	INTEGER	FK from Report – the report that has security configured on it.
FullPriv	TEXT	A or D to allow or deny this user/group full access to this report.
ModifyPriv	TEXT	A or D to allow or deny this user/group the ability to modify this report.
ExecutePriv	TEXT	A or D to allow or deny this user/group the ability to execute this report.

Field	DataType	Description
ReadPriv	TEXT	A or D to allow or deny this user/group the ability to see this report and its schedules.
WritePriv	TEXT	A or D to allow or deny this user/group the ability to create schedules for this report.
ChangePermissionPriv	TEXT	A or D to allow or deny this user/group the ability to modify these permissions.

ReportSecurity_User

Field	DataType	Description
ReportSecurity_Id	INTEGER	FK from ReportSecurity.
User_Id	INTEGER	The ID of the user whom this set of security settings pertains to (from SysUser).

ReportSecurity_Group

Field	DataType	Description
ReportSecurity_Id	INTEGER	FK from ReportSecurity.
Group_Id	INTEGER	The ID of the group that this set of security settings pertains to (from SysGroup).

Folders

Folder

Contains all folder in Argos.

Field	DataType	Description
Id	INTEGER	Unique record identifier.
Name	TEXT	Name of the folder.
Guid	TEXT	The globally unique id for this Folder.
Folder_Id	INTEGER	The ID of this folder's parent folder.
Class	TEXT	Class name of this folder (e.g. "Trash").
Description	TEXT	Description of the folder.
CreatedBy	TEXT	User who created the folder.
CreateDate	DATETIME	Date/time the folder was created.
ModifiedBy	TEXT	User who last modified the folder.
ModifyDate	DATETIME	Date/time the folder was last modified.
RevisionControl	INTEGER	Indicates whether revision control is enabled for the DataBlocks in this folder.
MaxRevisions	INTEGER	Maximum number of revisions to keep.
WebView	INTEGER	Indicates if the DataBlocks in this folder are visible in the Web Viewer (0 = No, 1 = Yes, 2 = Use Parent).
Path	TEXT	The full Argos path to this folder.

DataBlocks

DataBlock

All DataBlocks in the system.

Field	DataType	Description
Id	INTEGER	Unique record identifier.
Name	TEXT	Name of the DataBlock.
Folder_Id	INTEGER	FK from Folder; the ID of the parent folder.
Guid	TEXT	The globally unique id for this DataBlock.
Description	TEXT	Description of the DataBlock.
Author	TEXT	Author of the DataBlock.
CreateDate	DATETIME	Date/time the DataBlock was created.
ModifiedBy	TEXT	User who last modified the DataBlock.
ModifyDate	DATETIME	Date/time the DataBlock was last modified.
Connection_Id	INTEGER	The ID of the data connection used by this DataBlock (from Connection).
SynchroPublish	BOOLEAN	True if changes to this DataBlock should be auto-synchronized with the Publish server.
Licensed	BOOLEAN	True if the DataBlock contains licensed data.
RevisionControl	INTEGER	Indicates if this DataBlock is under revision control (0 = No, 1 = Yes, 2 = Use Parent).
MaxRevisions	INTEGER	Maximum number of revisions to keep.
WebView	INTEGER	Is the DataBlock visible in the Web Viewer? (0-No, 1-Yes, 2-Use Parent).
LastRunDate	DATETIME	Date/time the DataBlock was last executed.
Path	TEXT	The full Argos path to this DataBlock.

DataBlockNote

DataBlock record notes.

Field	DataType	Description
Id	INTEGER	Unique record identifier.
DataBlock_Id	INTEGER	FK from DataBlock.
Title	TEXT	The title of the note.
AddedDate	DATETIME	The date/time the note was added.
ActivityDate	DATETIME	Last date/time this note was modified.
Author	TEXT	The user who added this note.
ModifiedBy	TEXT	The user who last modified this note.
Text	TEXT	The text of the note.

DataBlockObject

Field	DataType	Description
DataBlock_Id	INTEGER	FK from DataBlock.

Field	DataType	Description
Name	TEXT	The name of a form object or SQL variable in a DataBlock.
Type	TEXT	The type of object (DropDown control, Date Edit box, Memo field, SQL variable, etc.).
Description	TEXT	Description of the object.
Value	TEXT	Text or query associated with the object.
Connection_Id	INTEGER	FK from Connection, used if the object contains a SQL query that runs against a connection other than the DataBlock's default connection.

Reports

Report

All reports in the system.

Field	DataType	Description
Id	INTEGER	Unique record identifier.
Name	TEXT	Name of the report.
DataBlock_Id	INTEGER	FK from DataBlock – the ID of the parent DataBlock.
Type	TEXT	The type of report (CSV, banded, or extract).
Description	TEXT	Description of the what report is used for.
Author	TEXT	Author of the report.
CreateDate	DATETIME	Date/time the report was created.
ModifiedBy	TEXT	User who last modified the report.
ModifyDate	DATETIME	Date/time the report was last modified.
Private	BOOLEAN	True if this report is private (only visible to the author and to administrators).
Guid	TEXT	The globally unique id for this report.
ExtProp	TEXT	Extended properties (XML format).
Licensed	BOOLEAN	True if this object contains licensed data.
RevisionControl	INTEGER	Indicates if this report is under revision control. (0 = No, 1 = Yes, 2 = Use Parent).
MaxRevisions	INTEGER	Maximum number of revisions to keep.
LastRunDate	DATETIME	Date/time the report was last run.
Enabled	BOOLEAN	True if the API is enabled for this report, false if it has been disabled, or null if it has never been enabled.
UniqueId	TEXT	The unique report identifier used to access this report via the API.
UserName	TEXT	The username that the report will run as when called via the API.
Path	TEXT	The full Argos path to this report.

ReportNote

Report record notes.

Field	DataType	Description
Id	INTEGER	Unique record identifier.
Report_Id	INTEGER	FK from Report.
Title	TEXT	The title of this note.
AddedDate	DATETIME	The date/time this note was added.
ActivityDate	DATETIME	Last date/time this note was modified.
Author	TEXT	The user that added this note.
ModifiedBy	TEXT	The user that last modified this note.
Text	TEXT	The text of the note.

Schedules

Schedule

All scheduled reports.

Field	DataType	Description
Id	INTEGER	Unique record identifier.
Name	TEXT	Name of the schedule.
Active	BOOLEAN	Controls whether the scheduled report is currently active.
Report_Id	INTEGER	FK from Report – the parent report for this schedule.
Creator	TEXT	The user who created the schedule.
NextDate	DATETIME	The next scheduled date/time for execution.
NextRunDate	DATETIME	The next date/time the schedule will actually run.
Username	TEXT	The user who the schedule will be executed as.
FinalDate	DATETIME	The final date/time the schedule should execute.
FinalRunDel	BOOLEAN	Controls whether the schedule is deleted after its final run.
CreateDate	DATETIME	The date/time the schedule was created.
ModifiedBy	TEXT	The user who last modified the schedule.
ModifyDate	DATETIME	The date/time the schedule was last modified.
Note	TEXT	A simple note so the user can describe schedule's purpose.
LastRunDate	DATETIME	Date/time the schedule was last executed.
Path	TEXT	The full Argos path to this schedule.

Field	DataType	Description														
DaysOfWeek	INTEGER	<p>The days of the week on which the schedule should run, if specified. Binary encoded. 0 = default.</p> <p>To calculate the value, a number is assigned to each day as follows:</p> <ul style="list-style-type: none">Monday - 1Tuesday - 2Wednesday - 4Thursday - 8Friday - 16Saturday - 32Sunday – 64 <p>The value in DaysOfWeek is the sum of the values for each day the schedule will run. For example, a schedule that runs Monday, Wednesday, and Friday will be assigned the value 1 + 4 + 16 = 21.</p> <p>When represented in binary, a MWF schedule (21) will be 0010101. Notice that, from right to left, each digit corresponds to a day of week:</p> <table><tr><td>0</td><td>0</td><td>1</td><td>0</td><td>1</td><td>0</td><td>1</td></tr><tr><td>Su</td><td>S</td><td>F</td><td>Th</td><td>W</td><td>Tu</td><td>M</td></tr></table> <p>You can therefore use a bitwise AND operator to query for schedules that run on the desired day(s). To find all schedules that run on Monday, Wednesday, and Friday, you would enter:</p> <pre>select * from schedule where (schedule.DaysOfWeek & 1) > 0 and (schedule.DaysOfWeek & 4) > 0 and (schedule.DaysOfWeek & 8) > 0</pre>	0	0	1	0	1	0	1	Su	S	F	Th	W	Tu	M
0	0	1	0	1	0	1										
Su	S	F	Th	W	Tu	M										
Frequency	INTEGER	<p>Frequency code for when to repeat the execution, where x is the value in FrequencyAmount.</p> <ul style="list-style-type: none">0 - Only once1 - Every x minutes2 - Every x hours3 - Every day4 - Every x days5 - Every week6 - Every x weeks7 - Twice per month8 - Every month9 - Every x months10 - Twice per year11 - Every year12 - Every x years														

Field	DataType	Description
FrequencyAmount	INTEGER	Depends on the value of FREQUENCY. Represents the number of minutes, hours, days, weeks, or years in which to repeat execution.

[ScheduleEvent](#)

The tasks associated with an event.

Field	DataType	Description
Id	INTEGER	Unique record identifier.
Schedule_Id	INTEGER	FK from Schedule.
Name	TEXT	The name of the event option ("OnSuccess" or "OnError").
Type	TEXT	The type of event (ex. Email).

[ScheduleEventProperty](#)

Details of the schedule's event. Currently contains details for email, copy, and print events.

Field	DataType	Description
ScheduleEvent_Id	INTEGER	FK from ScheduleEvent.
Name	TEXT	The name of the event option.
Value	TEXT	The value assigned to that option.

[ScheduleTask](#)

The tasks associated with a schedule.

Field	DataType	Description
Id	INTEGER	Unique record identifier.
Schedule_Id	INTEGER	FK from Schedule.
Type	TEXT	The type of task (Execute, Process, CopyFile, Email, etc.).

[ScheduleTaskProperty](#)

Details of the schedule's tasks. Currently contains details for email, copy, and print tasks.

Field	DataType	Description
ScheduleTask_Id	INTEGER	FK from ScheduleTask.
Name	TEXT	The name of the task option.
Value	TEXT	The value assigned to that option.

Auditing

Audit

Field	DataType	Description
Id	INTEGER	Unique record identifier.
ActivityDate	DATETIME	Date/time the action took place.
Application	TEXT	The application that initiated the action.
UserName	TEXT	The user that initiated the action.
Action	TEXT	Short description of the action.
Text	TEXT	Long description of the action.

AuditProperty

Field	DataType	Description
Name	TEXT	The name of the property.
Audit_Id	INTEGER	Foreign key to the Audit record.
Value	TEXT	The value associated with the property.

AuditSummary

Field	DataType	Description
Id	INTEGER	Unique record identifier.
ActivityDate	DATETIME	Date/time the action took place.
Application	TEXT	The application that initiated the action.
ObjectType	TEXT	The type (report, DB, etc.) of info.
ValueType	TEXT	The type (sum, average, time) of value.
Value	INTEGER	The numeric value of this object type.
Text	TEXT	Long description of the action (if necessary).

Database Change History

6.11

MAPS Database

- Added GroupCategory table.
- Added GroupCategory_Group table.
- Removed Source and Data from the SysGroup table.

6.10.2

MAPS Database

- Added UserAuth table (used to cache authorization data for resource users).

6.10

MAPS Database

- Added Data to the SsoToken table.

6.8.1

Argos Database

- Added Version to the DataBlockData table.
- Renamed ApiReferrer table to ApiRestriction.
- Added Type and ActivityDate to ApiRestriction.
- Removed Username and Password from ApiRestriction.

6.8

MAPS Database

- Added SecurityToken table (used for launching applications in the eLauncher).

6.7

Argos Database

- Added Draft table (used for autosave).
- Added Draft_DataBlock table (used for autosave).
- Added Draft_Report table (used for autosave).

6.6

MAPS Database

- Added Delivery table (for use in future development).
- Added DeliveryFile table (for use in future development).

Data Warehouse

- Added ScheduleEvent table to Schedule.
- Added ScheduleEventProperty table to Schedule.

6.5

MAPS Database

- Added ConnData to the ClientSession table.
- Added ConnectionRestEndpoint table.
- Added ConnectionRulePropertyName table.
- Added ConnectionRulePropertyValue table.
- Added Xqp table.
- Added XqpData table.

6.4

MAPS Auditing and Data Warehouse Databases

- Added AuditProperty table.

6.3

MAPS Database

- Removed the CasServer table.
- Added SsoMethod table.
- Added SsoToken table.
- Added SsoMethodPropertyName table.
- Added SsoMethodPropertyValue table.

6.2

MAPS Database

- Added UserInfo table.
- Added UserTrack table.

- Added field Type to ClientSession table.

Data Warehouse

- Added UserInfo table.

6.1.1

MAPS Database

- Renamed ApplicationEdition.Description to ApplicationEdition.Name.
- Added new values to the SysMain table that pertain to database maintenance.

Data Warehouse

- Added MapsNode table.

6.1

- Added FileData table.
- Added MappletData table.
- Added WebDataConnectorData table.
- Added ClientSession table.
- Added Connection_MapsNode table.
- Added MapsNode table.
- Added MapsNodeInfo table

6.0

MAPS Database

- Renamed Object and ObjectAttribute tables to DataObject and DataObjectAttribute.
- Moved email queue into database.
 - Added EmailQueueAttachment table to store email attachments that were previously in the Emails directory on the server.
 - Removed field EmailQueue.FileName.
 - Added field EmailQueue.Message to store email messages that were previously in the Emails directory on the server.
- Added ApplicationEdition table.
- Added ActiveServer table.
- Added LauncherRange table.
- Renamed ConnectionQueue.Start to StartTime and ConnectionQueue.End to EndTime.
- Moved Application.Description field to ApplicationEditionVersion.Description.
- Renamed the ApplicationVersion table to ApplicationEditionVersion.
- Converted most DATE types to DATETIME.

Argos Database

- Added ActiveArgos table.
- Added Schedule_ActiveArgos table.
- Converted most DATE types to DATETIME.